

## PROYECTO INTERDISCIPLINARIO

## MAPEO DE LA RESONANCIA DE LA VOZ EN EL CANTO LÍRICO

FUNDAMENTOS PARA LA COMPRESIÓN DE LA RESONANCIA Y LOS  
MOLDES VOCÁLICOS EN EL CANTO LÍRICO

## ANEXO: GRÁFICOS

## COORDINADORAS:

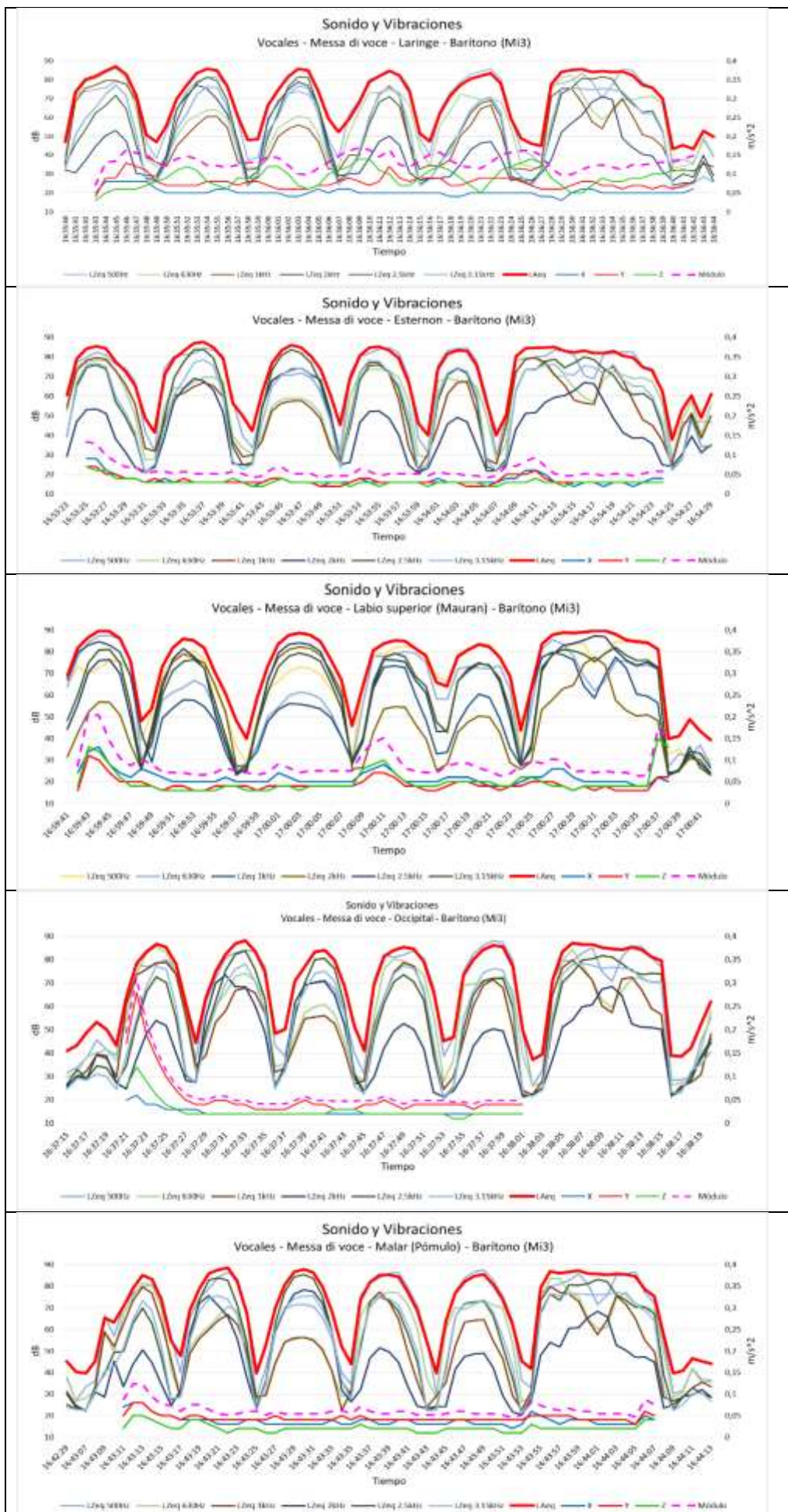
Alice Elizabeth González<sup>1</sup> y Silvia Palermo<sup>2</sup>

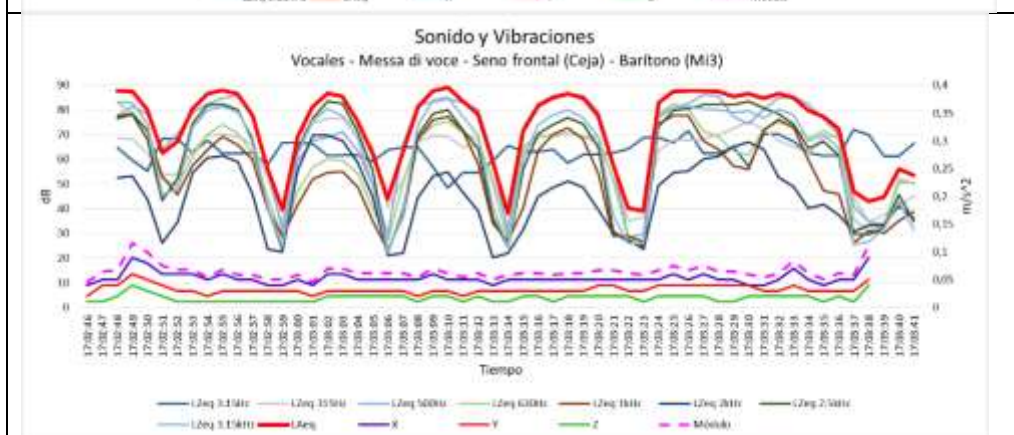
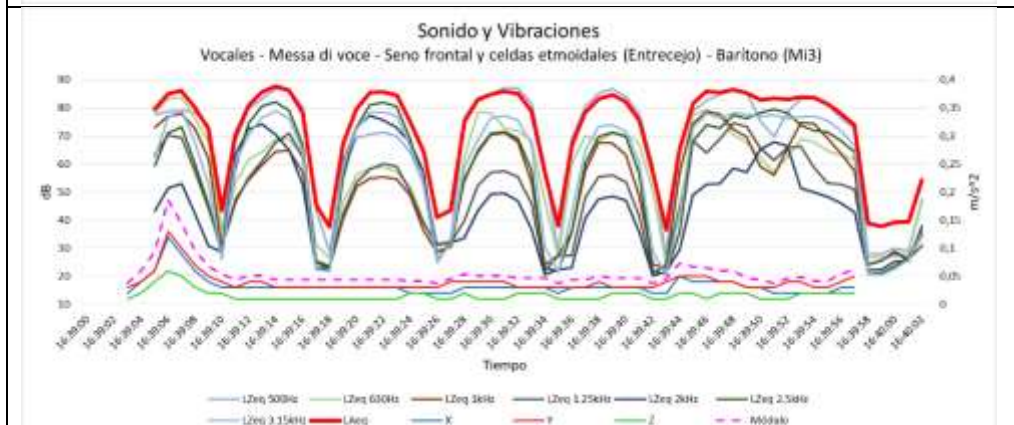
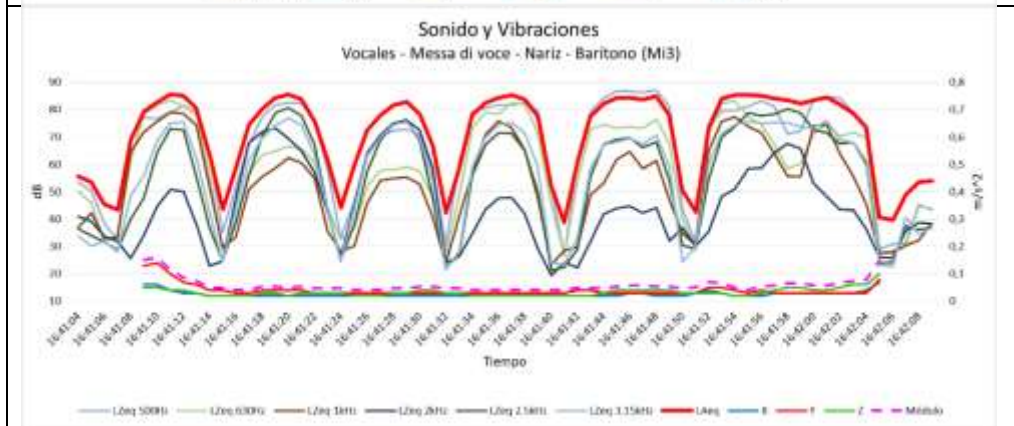
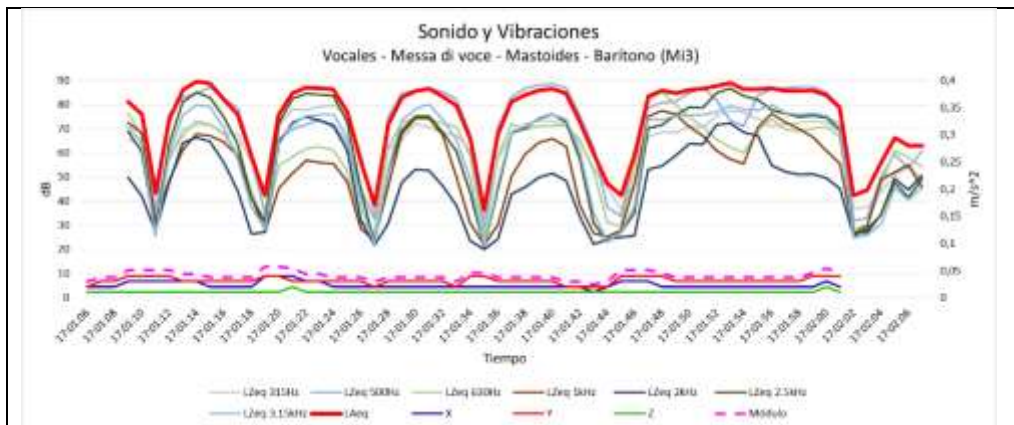
## EQUIPO TÉCNICO:

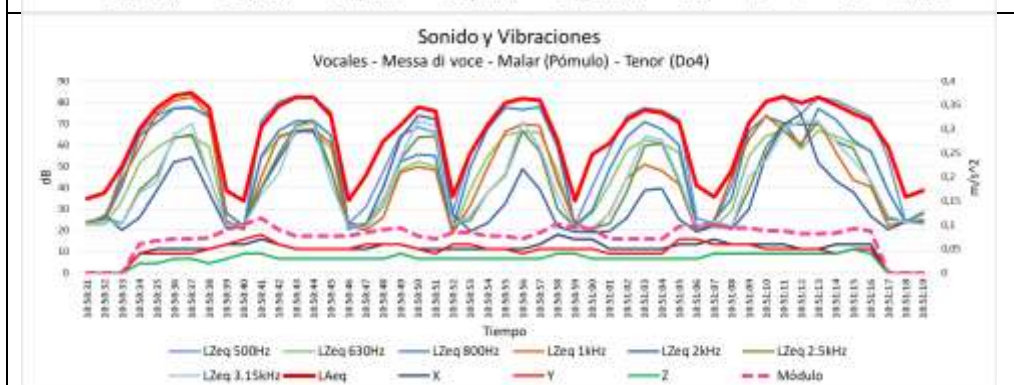
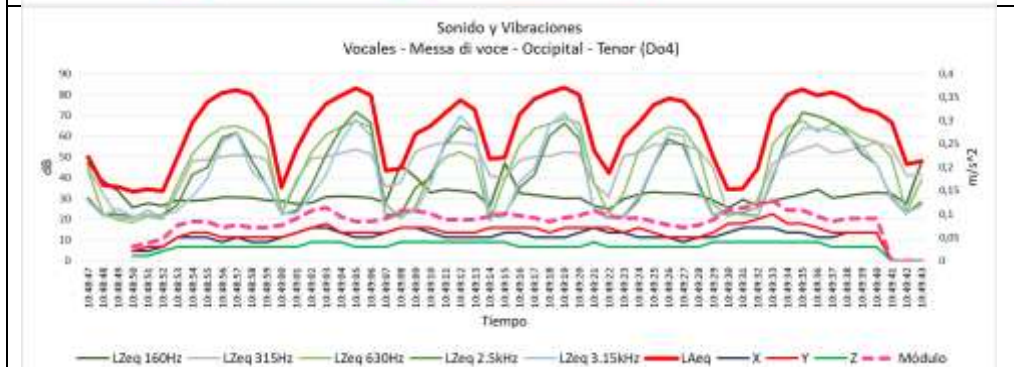
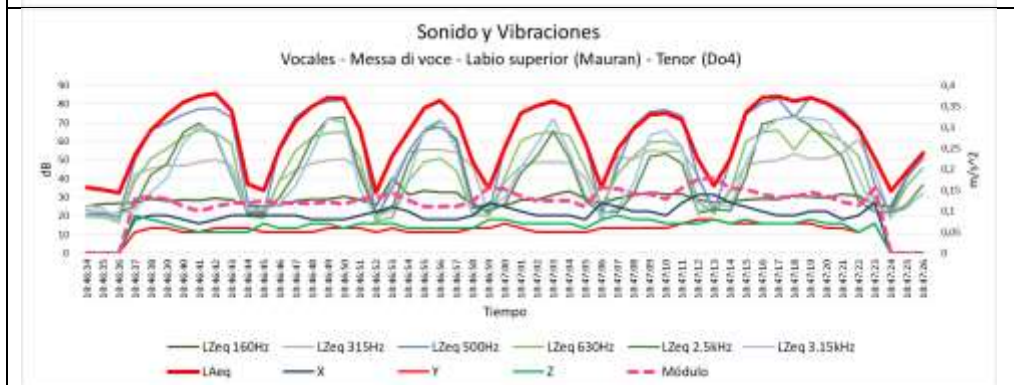
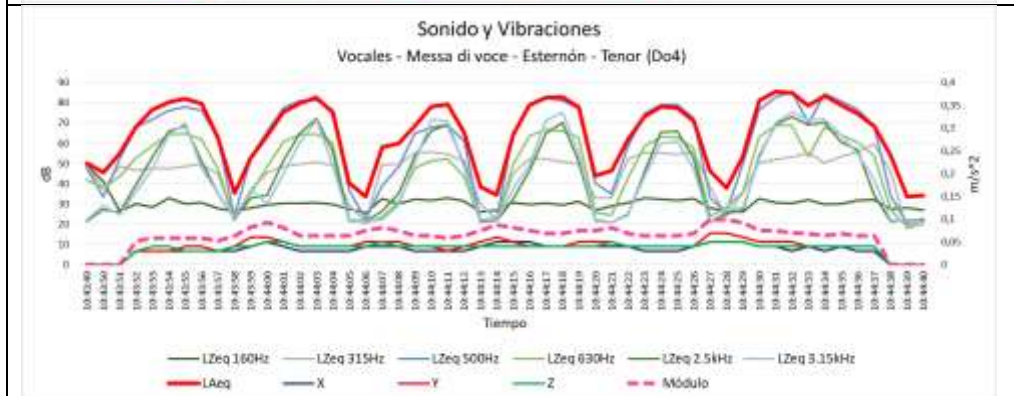
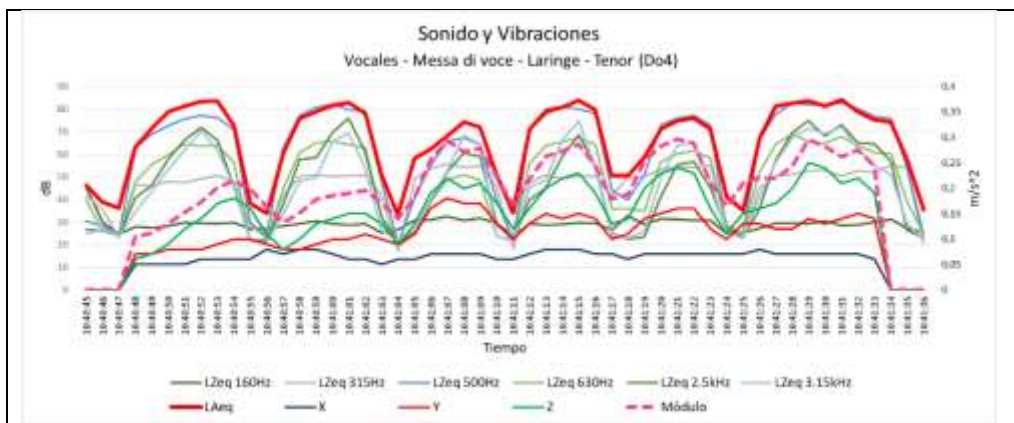
Maite Erro<sup>4</sup>Malena López Parard<sup>1</sup>Beatriz Lozano Barra<sup>3</sup>Natalia Lucero<sup>4</sup>Micaela Luzardo<sup>1</sup>Juan Ignacio Pais<sup>1</sup>Lady Carolina Ramírez<sup>1</sup>Ulrich Schrader<sup>3</sup>Noelle Vidal<sup>2</sup><sup>1</sup> Facultad de Ingeniería, DIA-IMFIA<sup>2</sup> Escuela Universitaria de Tecnología Médica, Licenciatura en Fonoaudiología<sup>3</sup> Escuela Universitaria de Música, Cátedra de Canto<sup>4</sup> Profesionales independientes, colaboradoras honorarias de la Licenciatura en Fonoaudiología

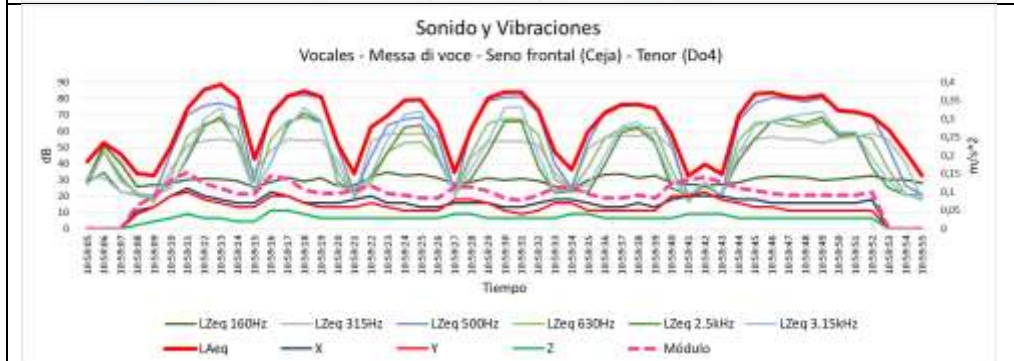
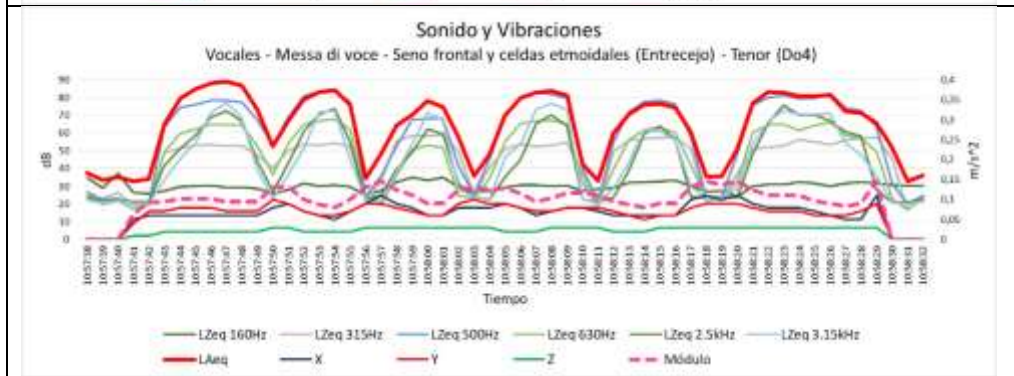
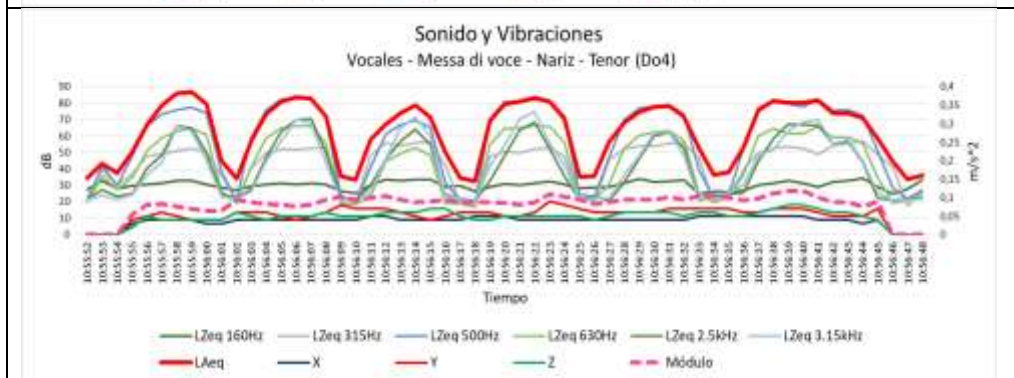
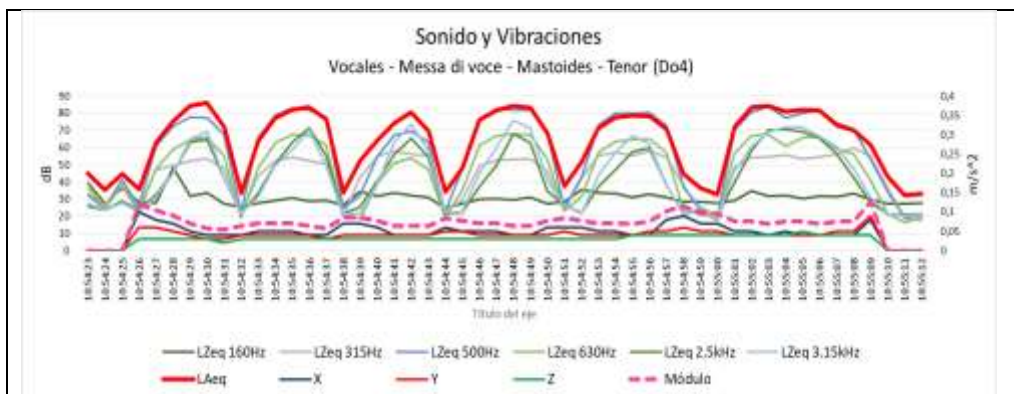


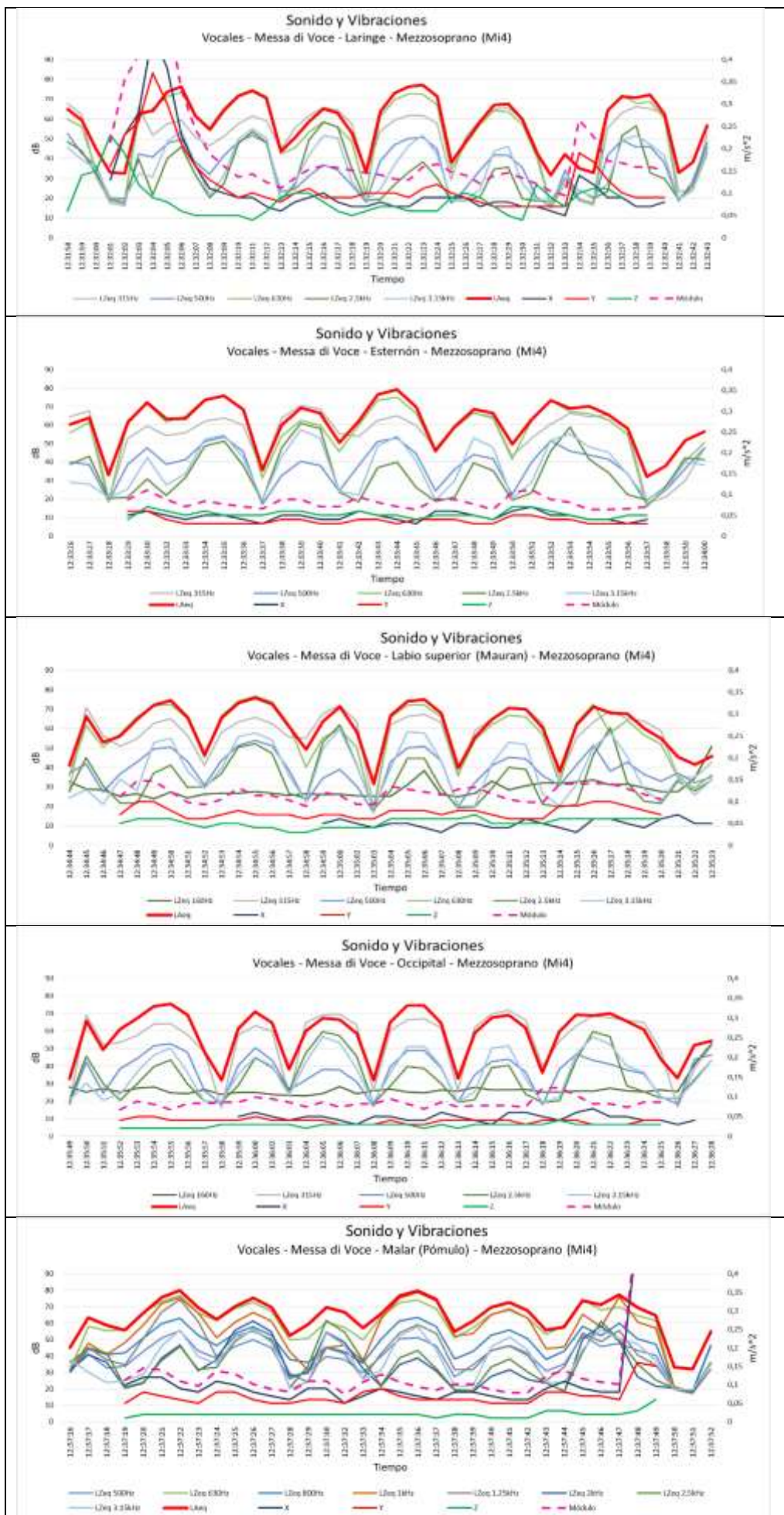


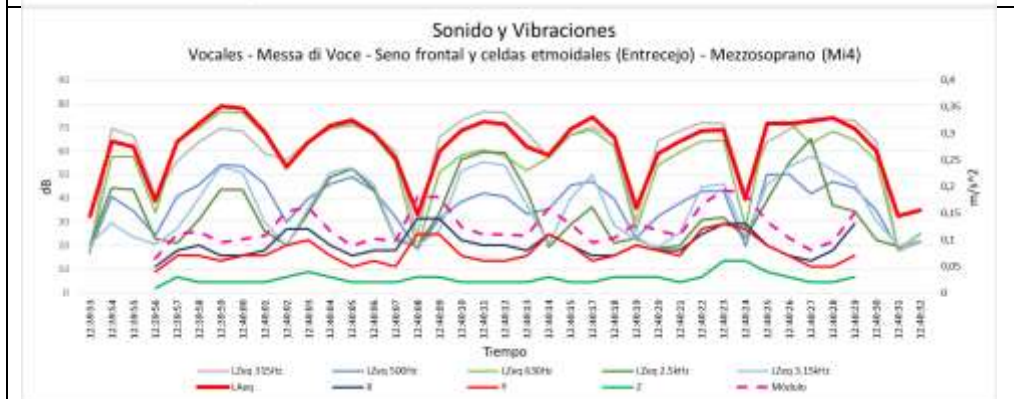
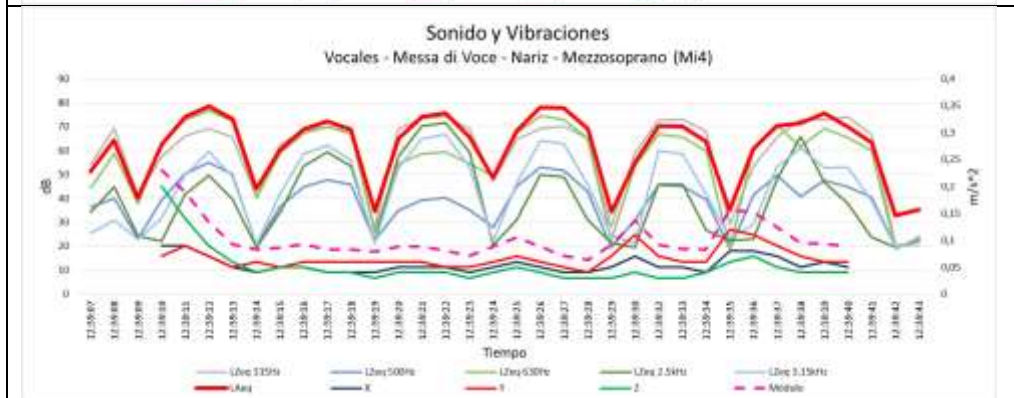
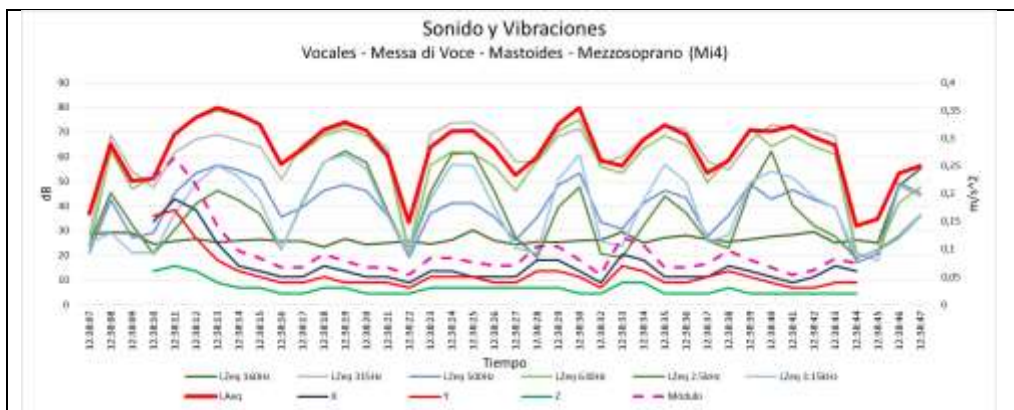


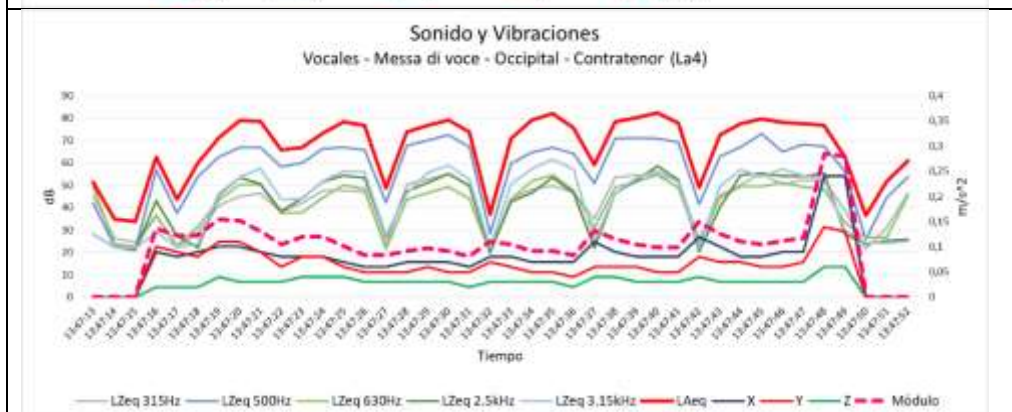
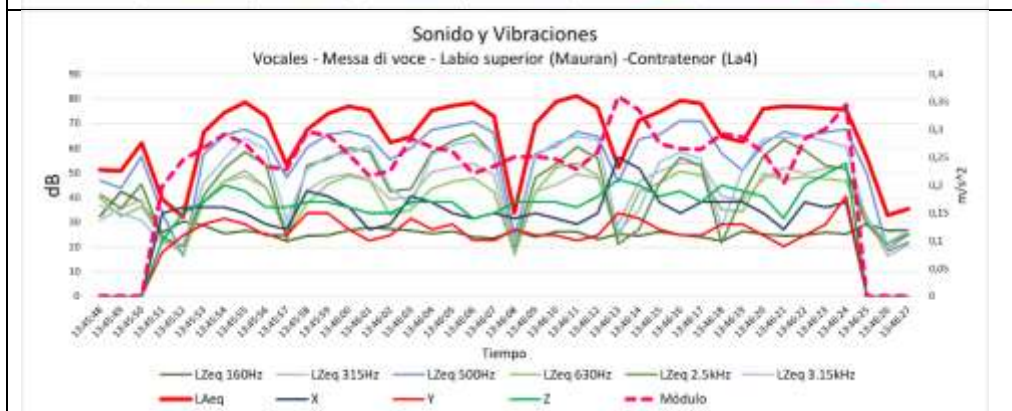
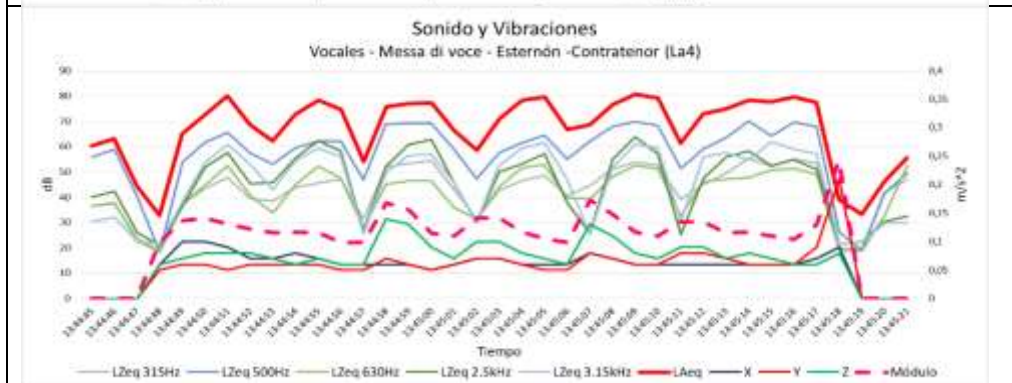


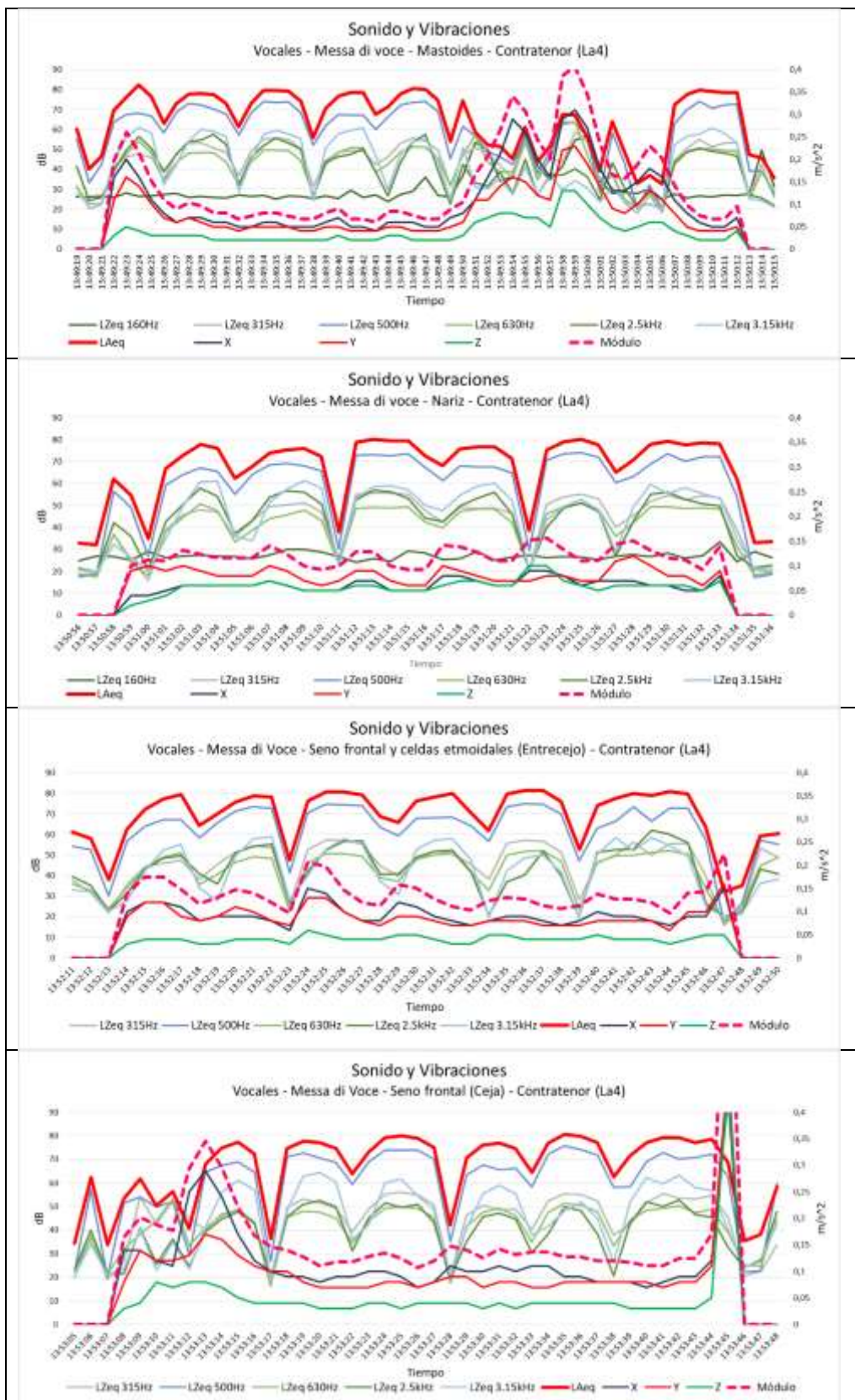




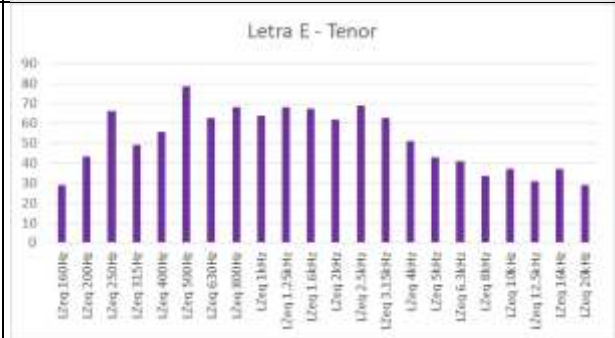
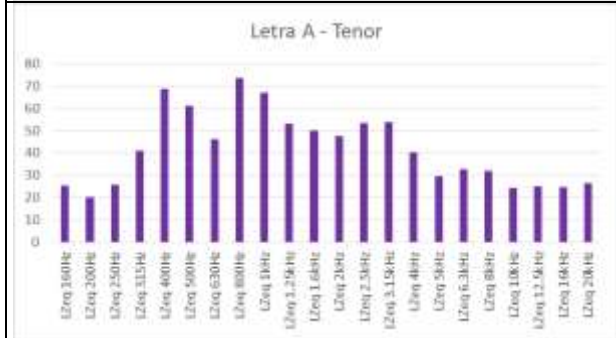
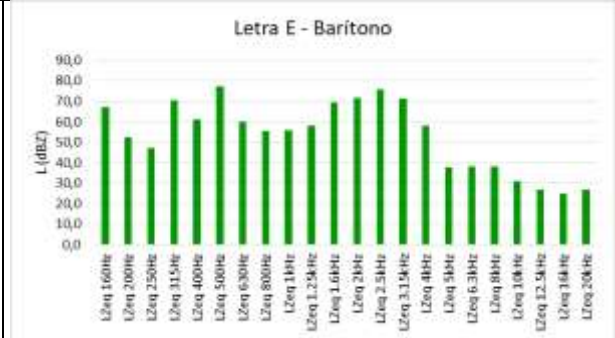
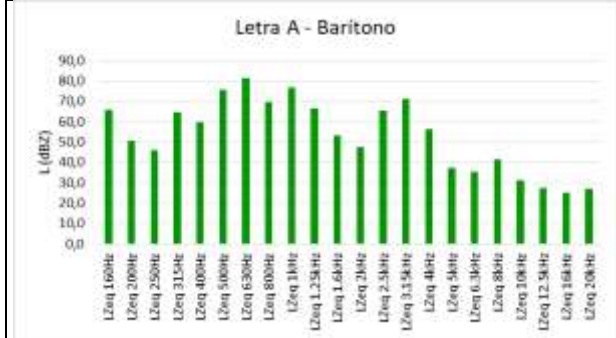


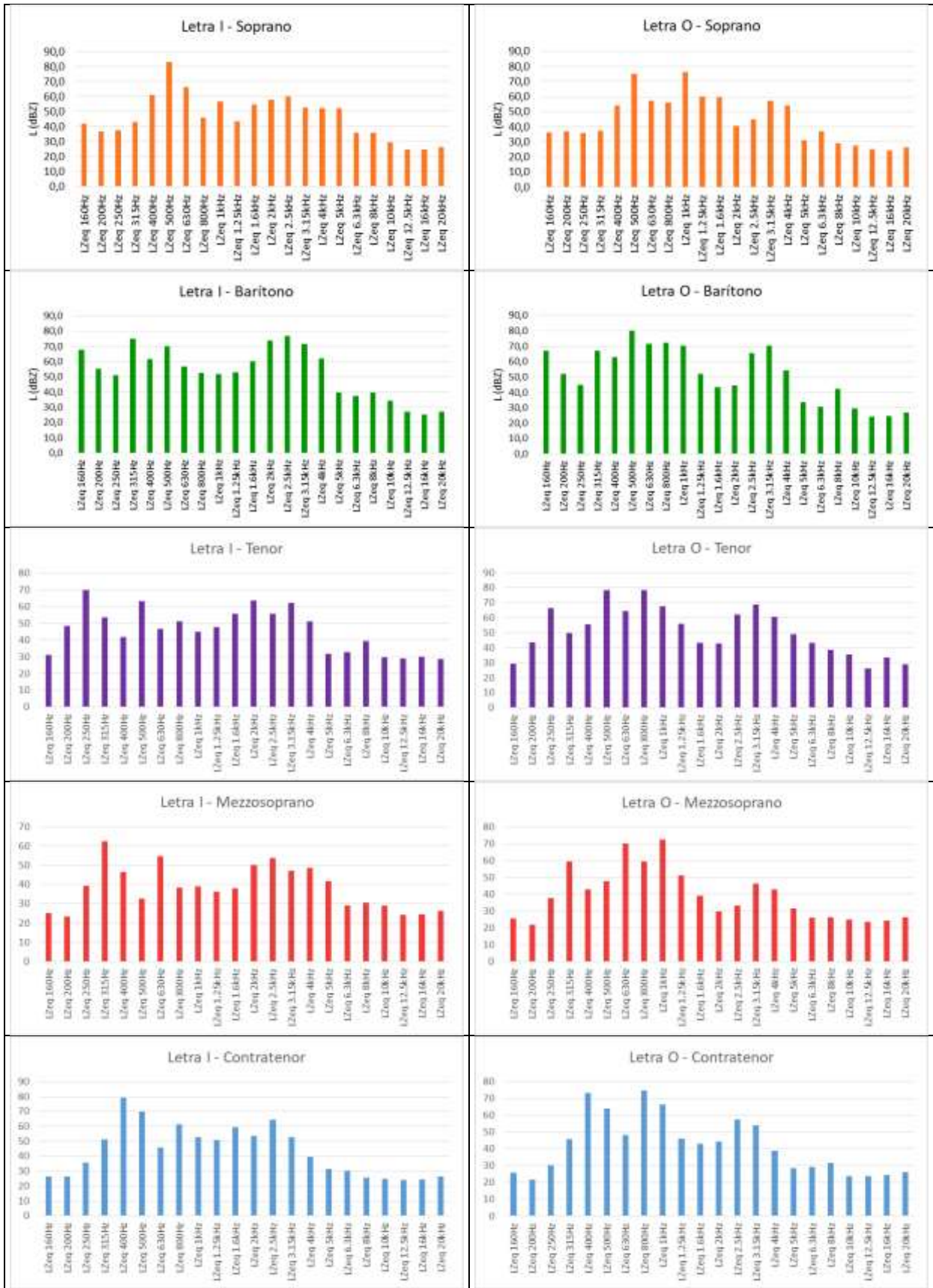


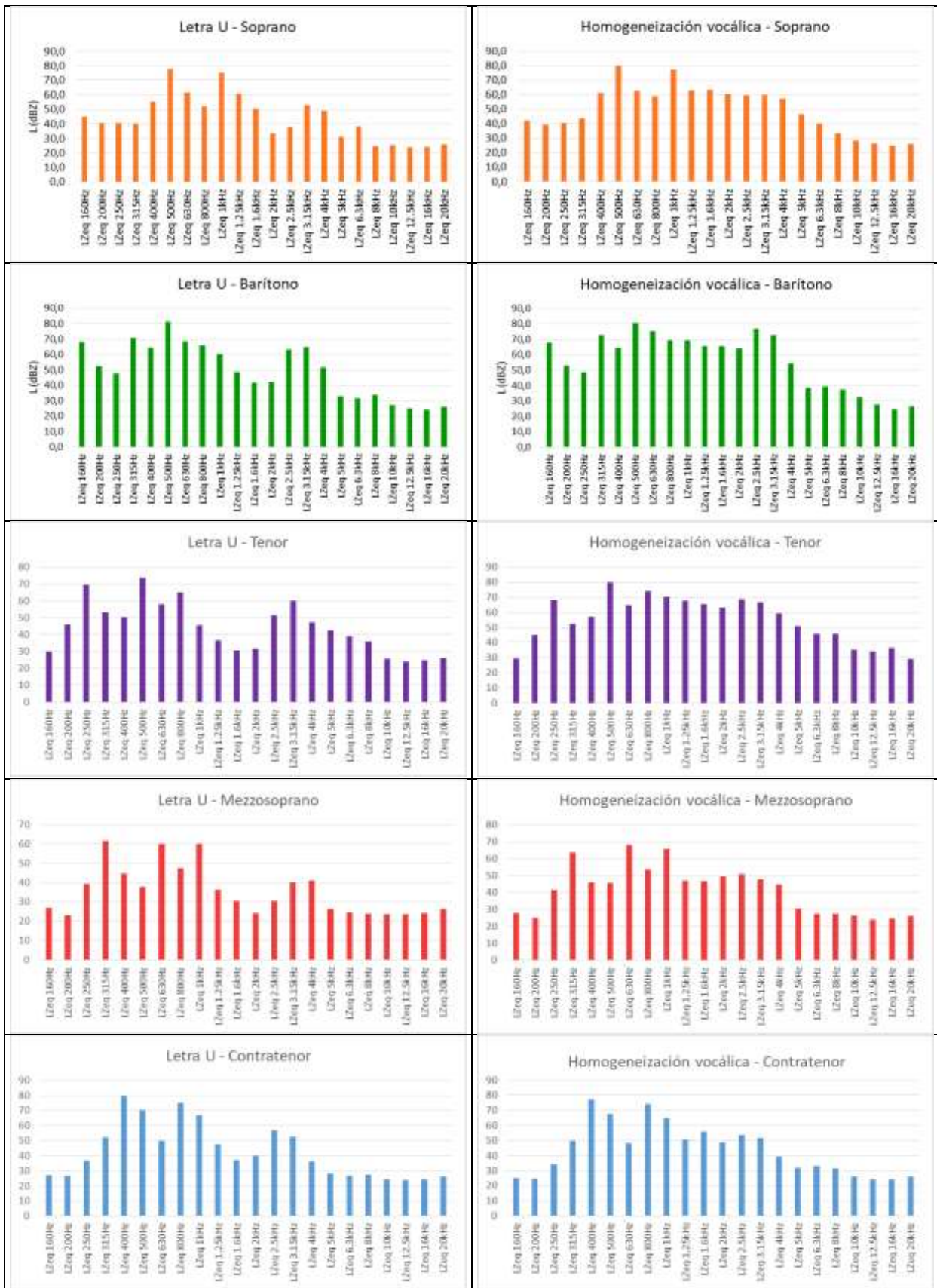


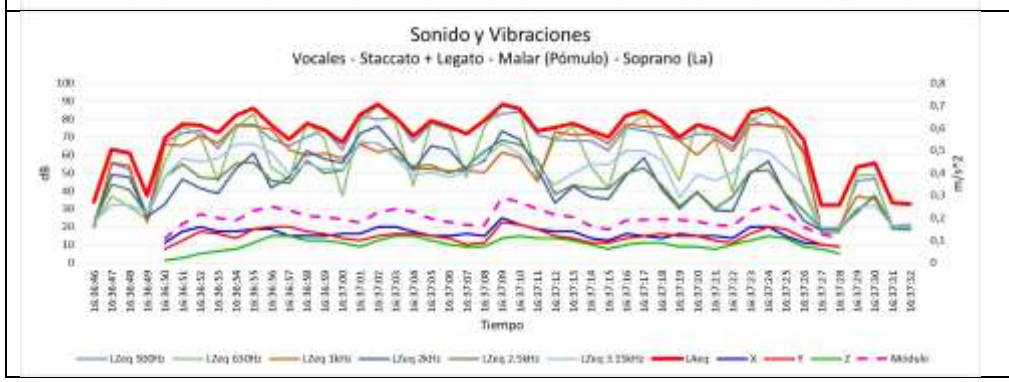
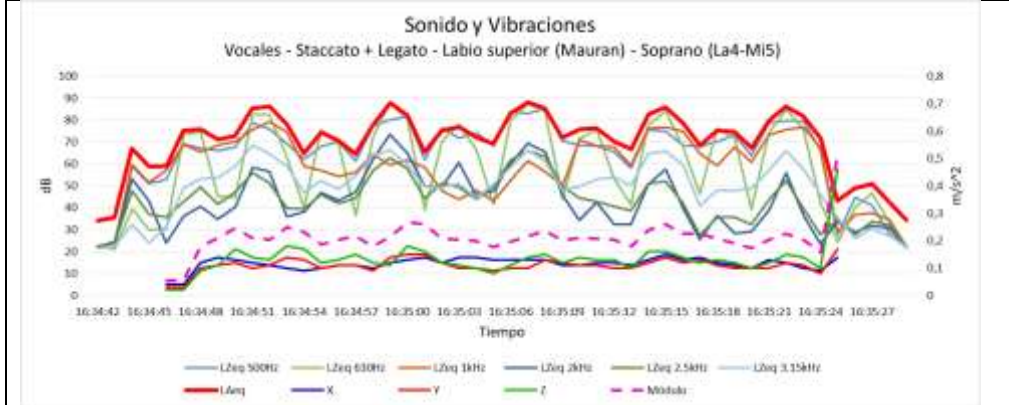
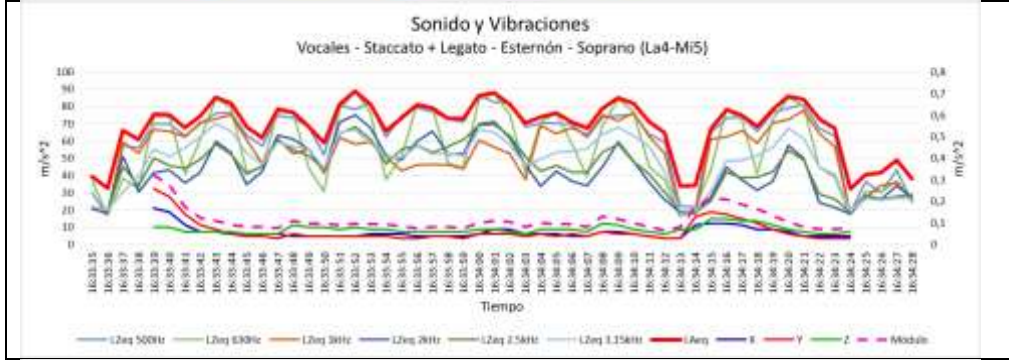
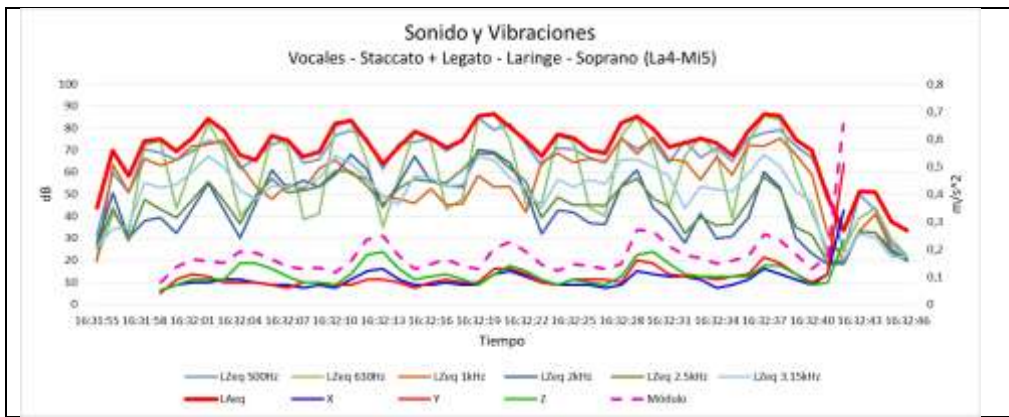


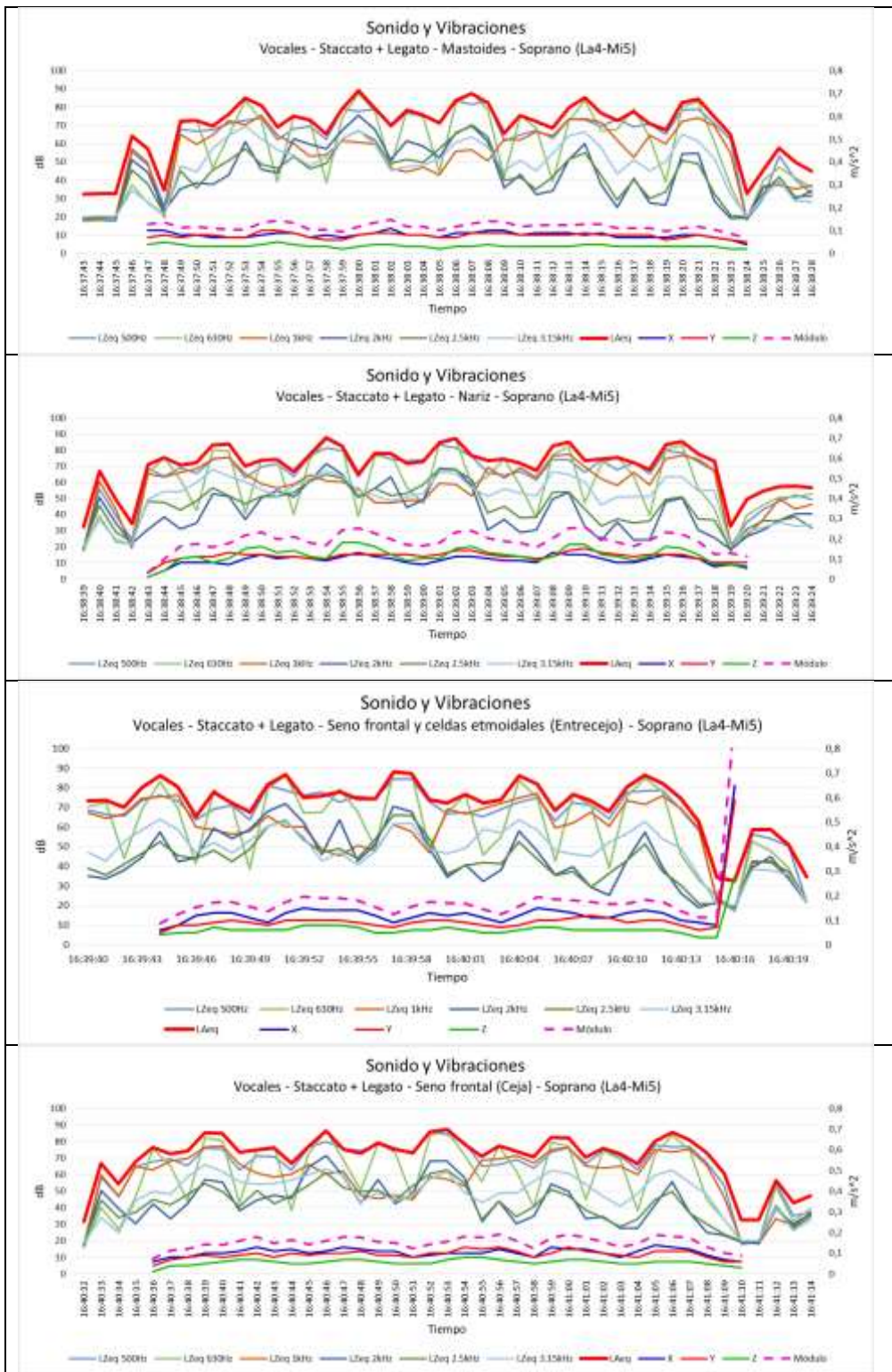
## MEZZA DI VOCE

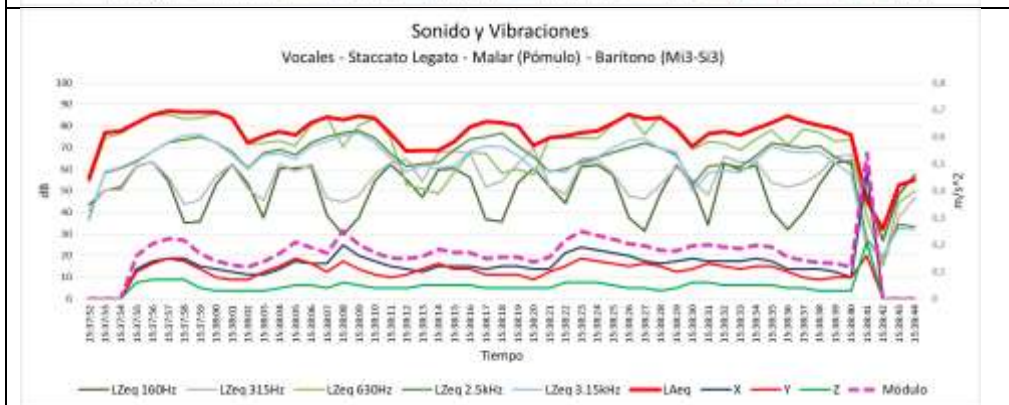
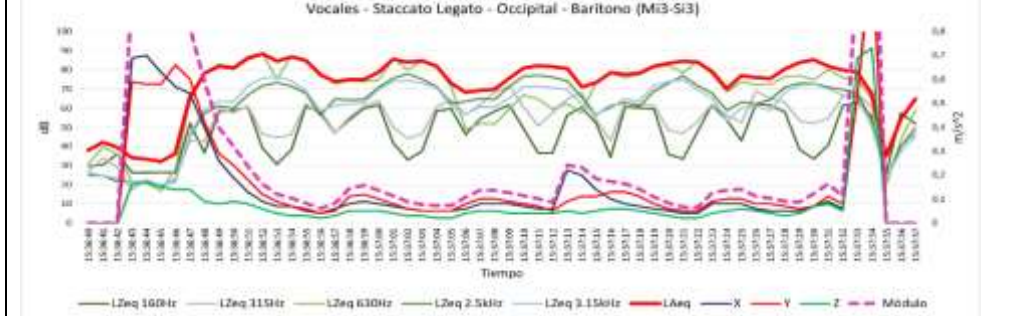
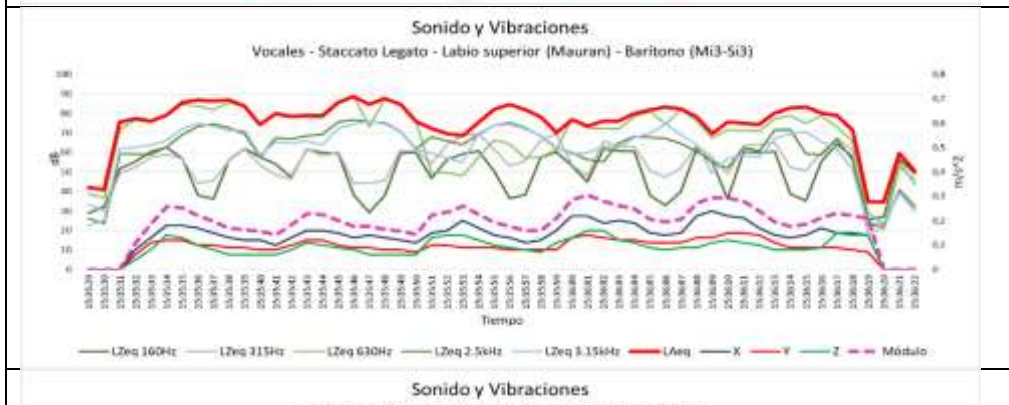
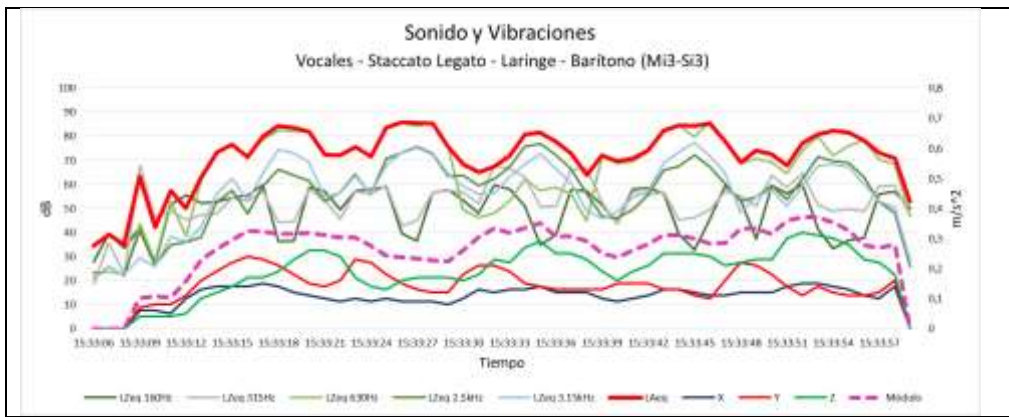


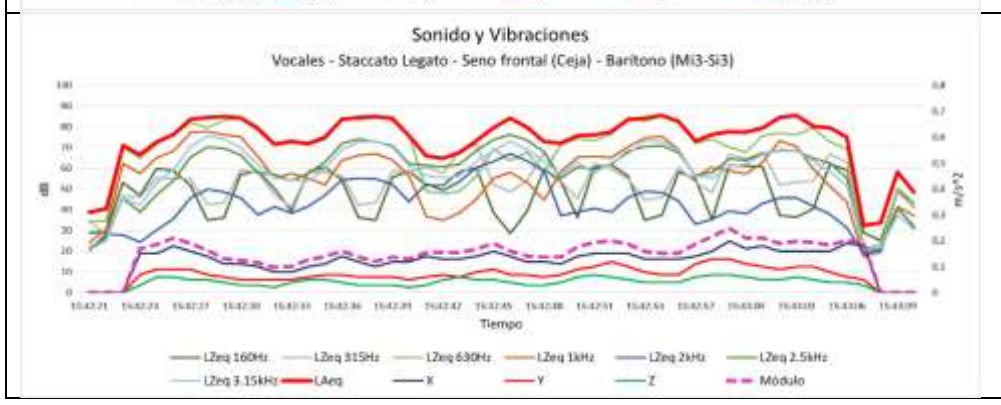
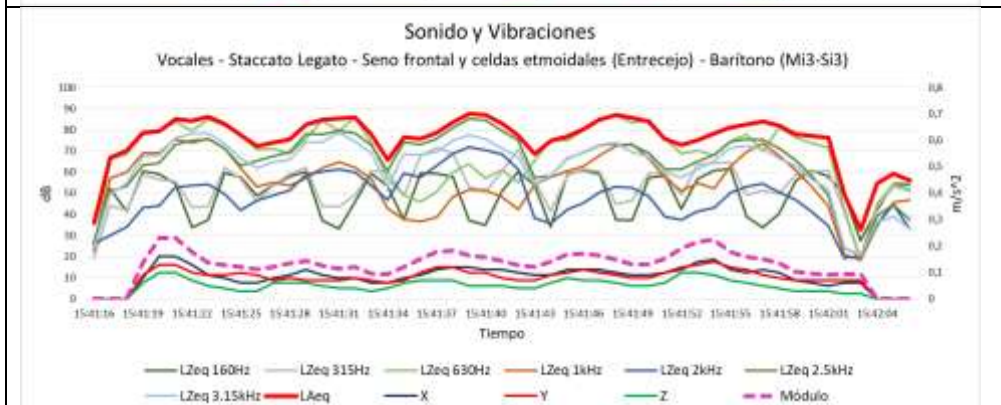
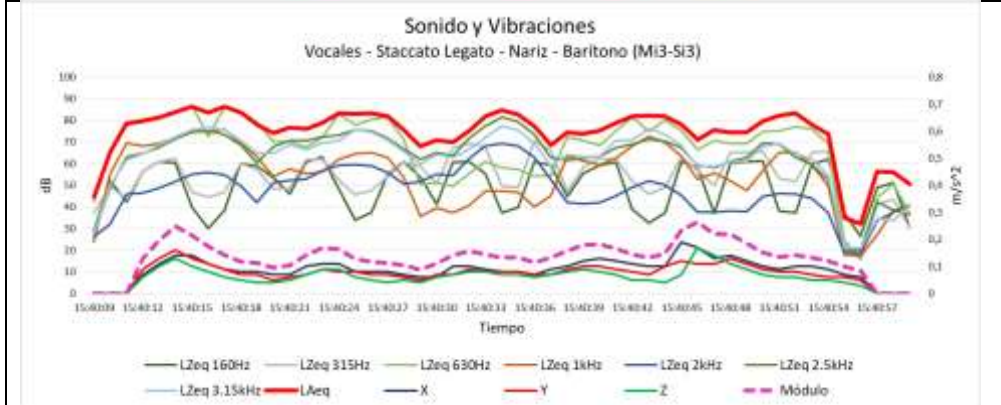
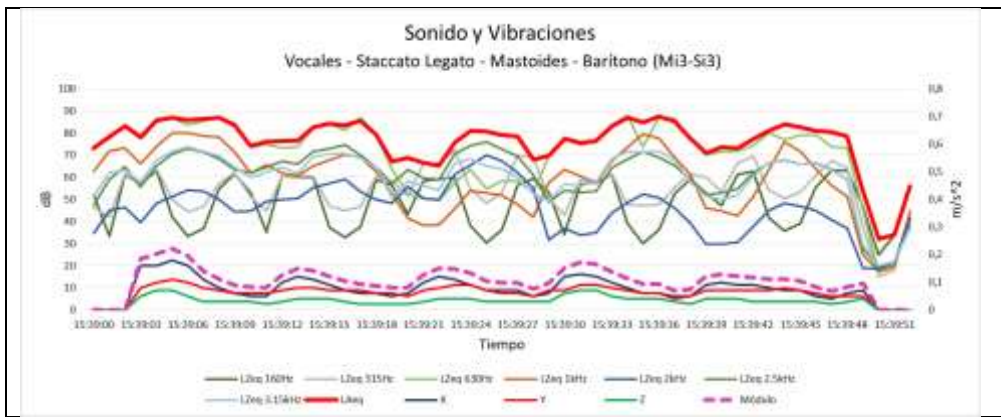


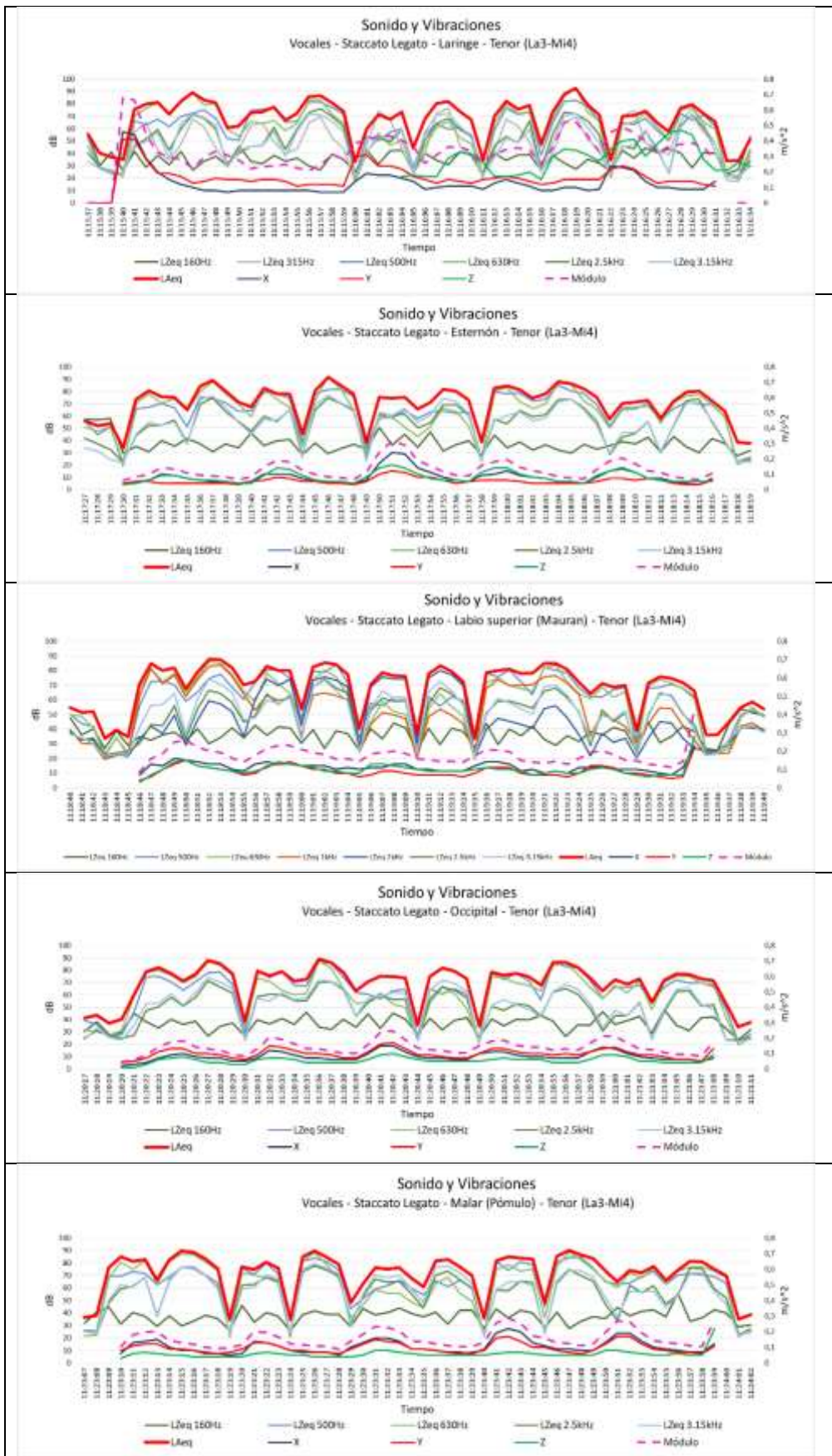


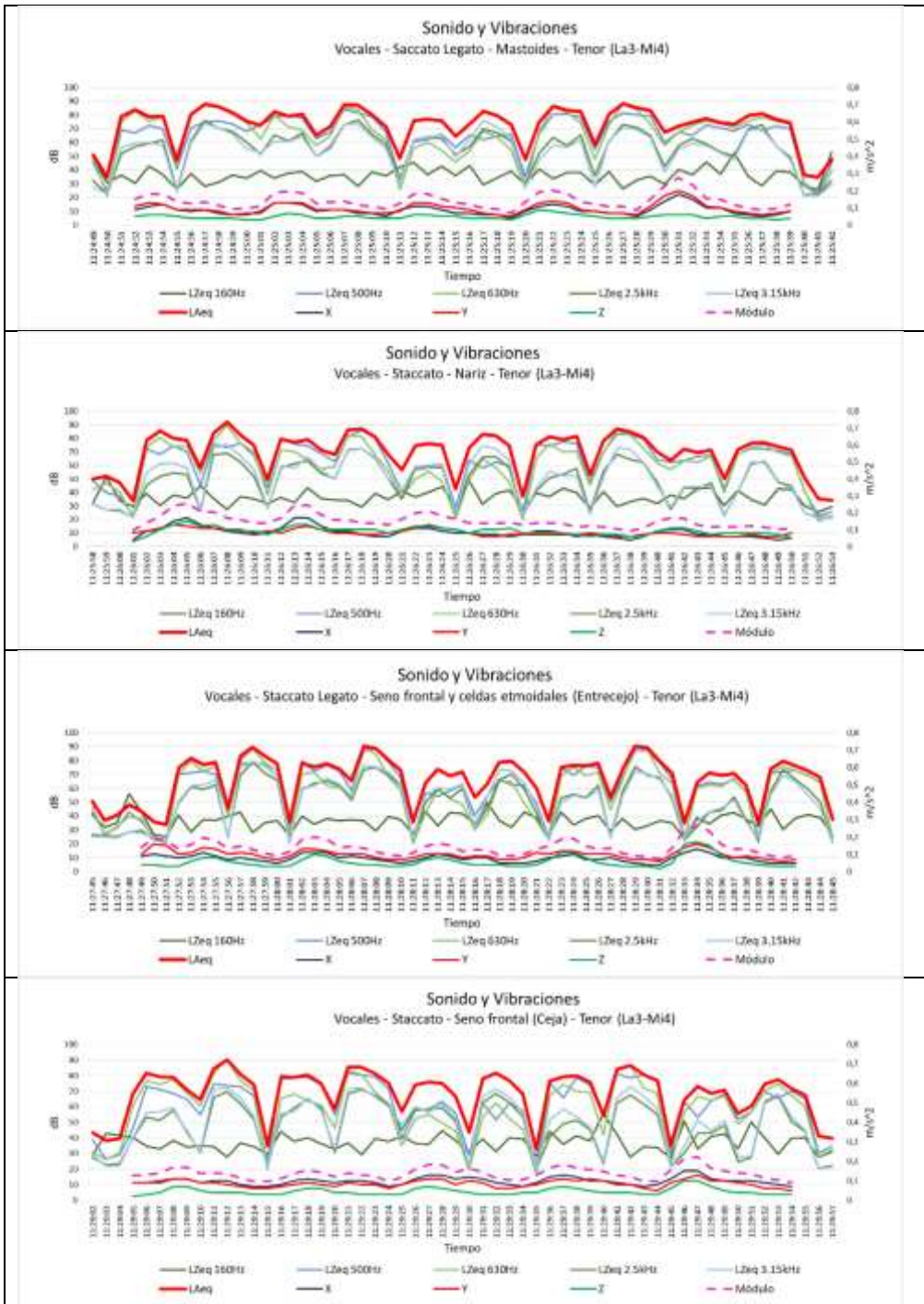


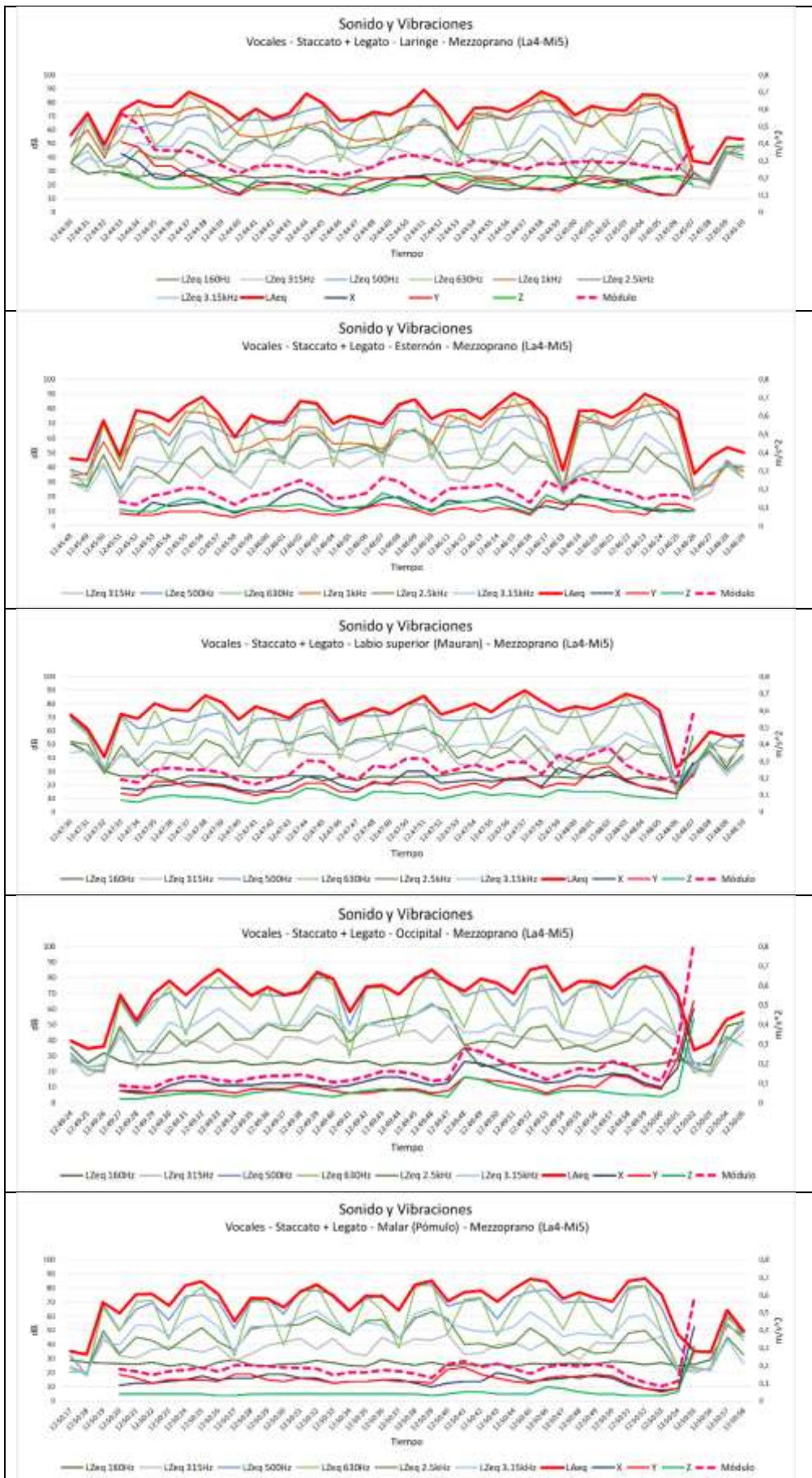


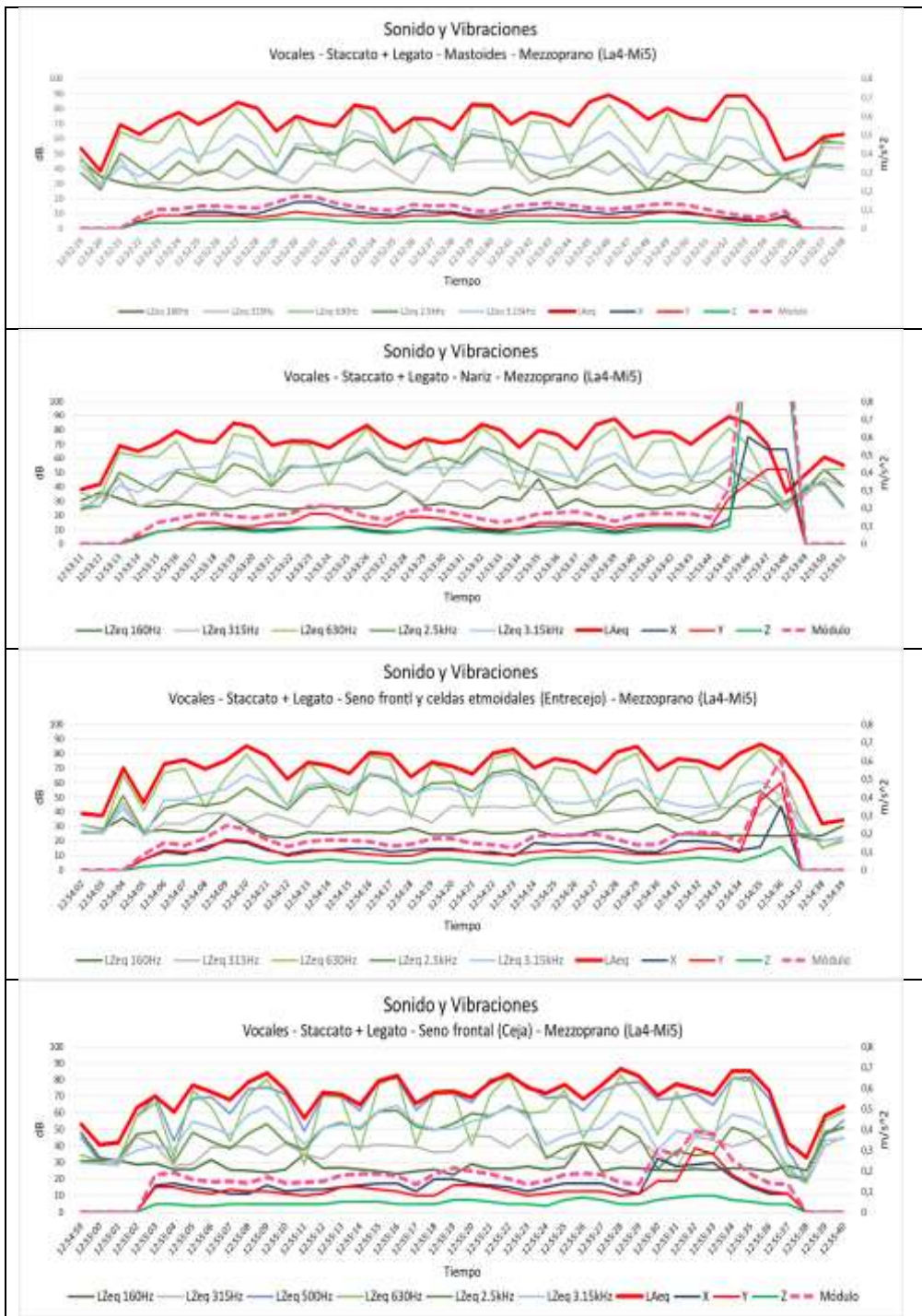


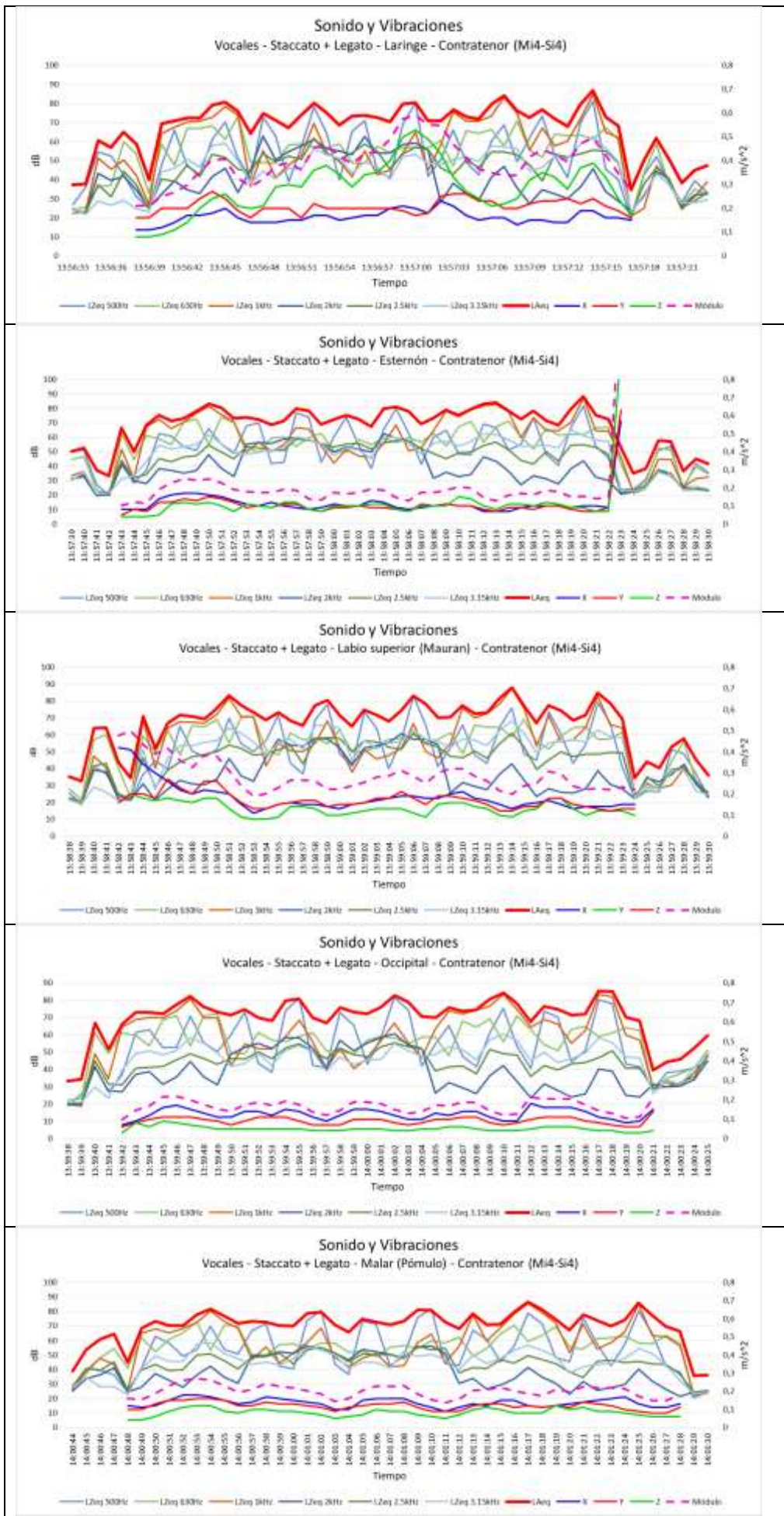


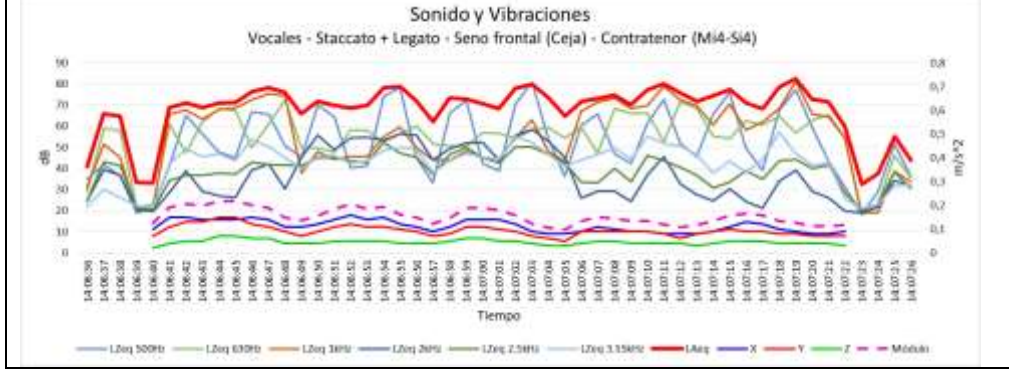
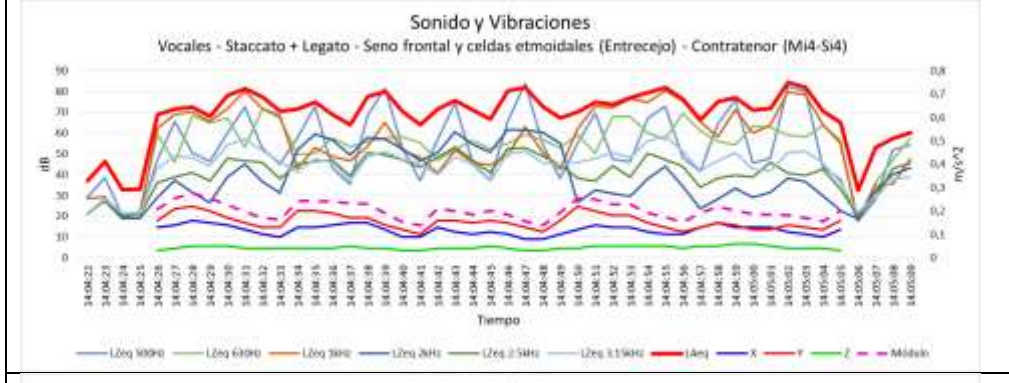
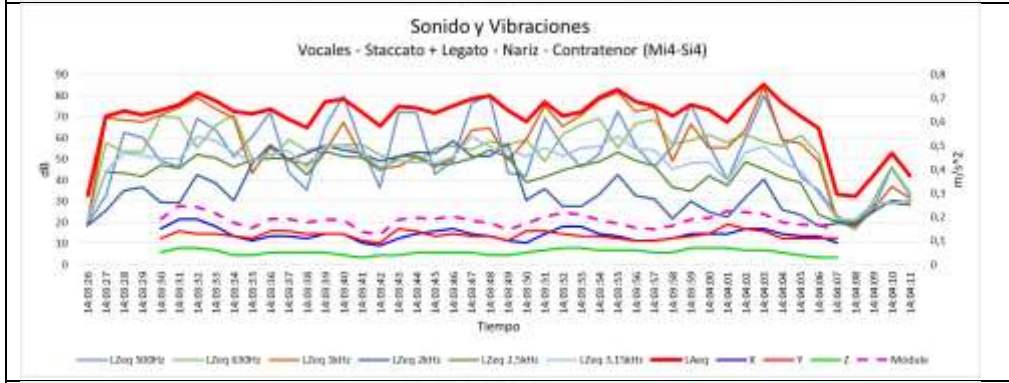
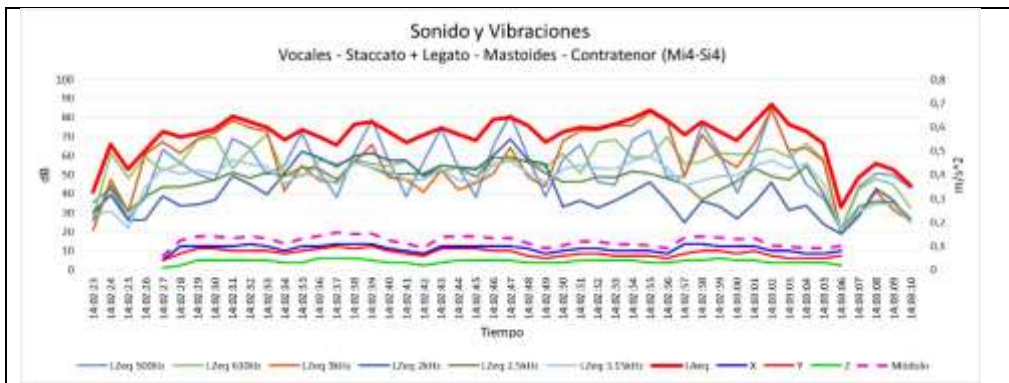




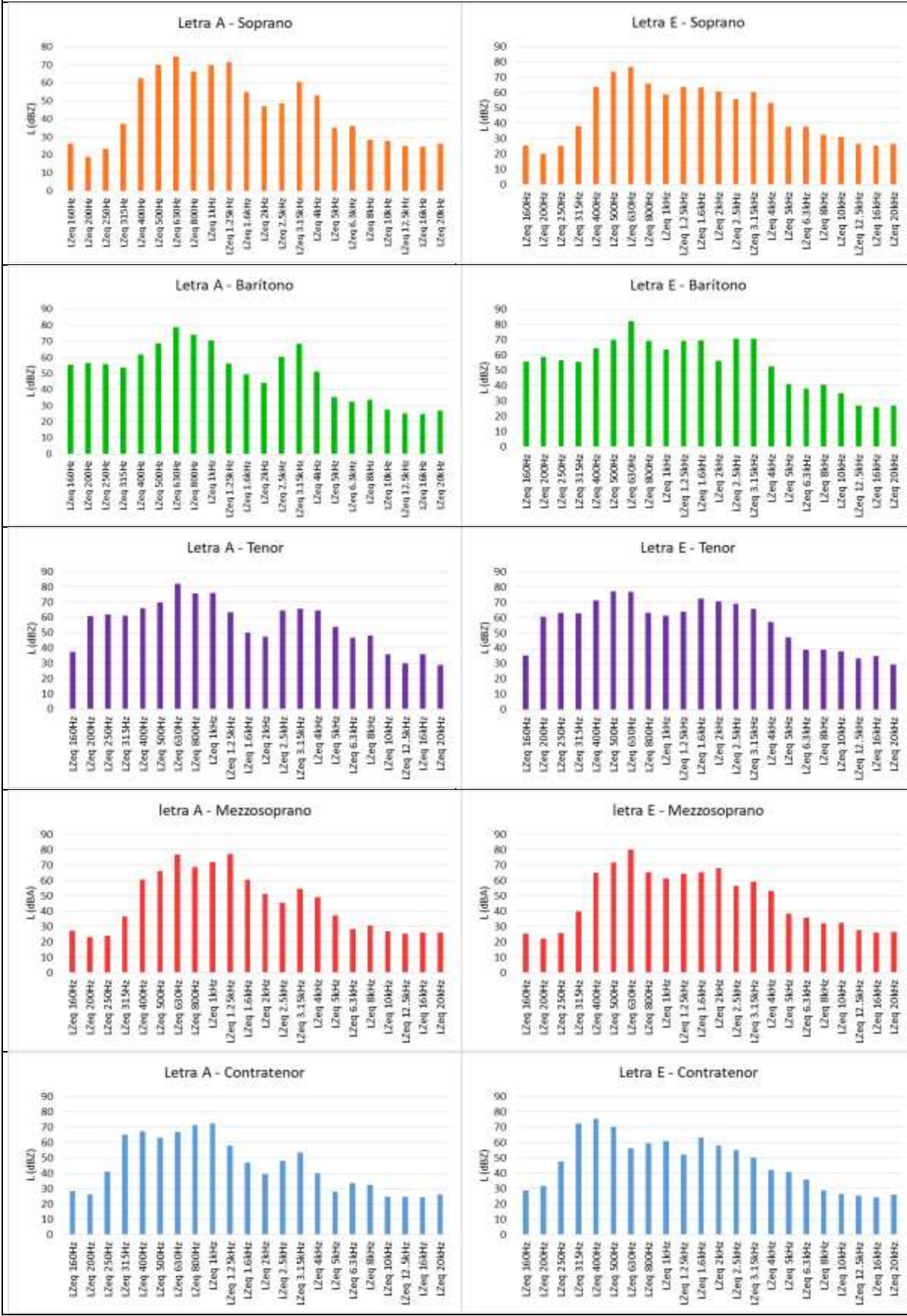


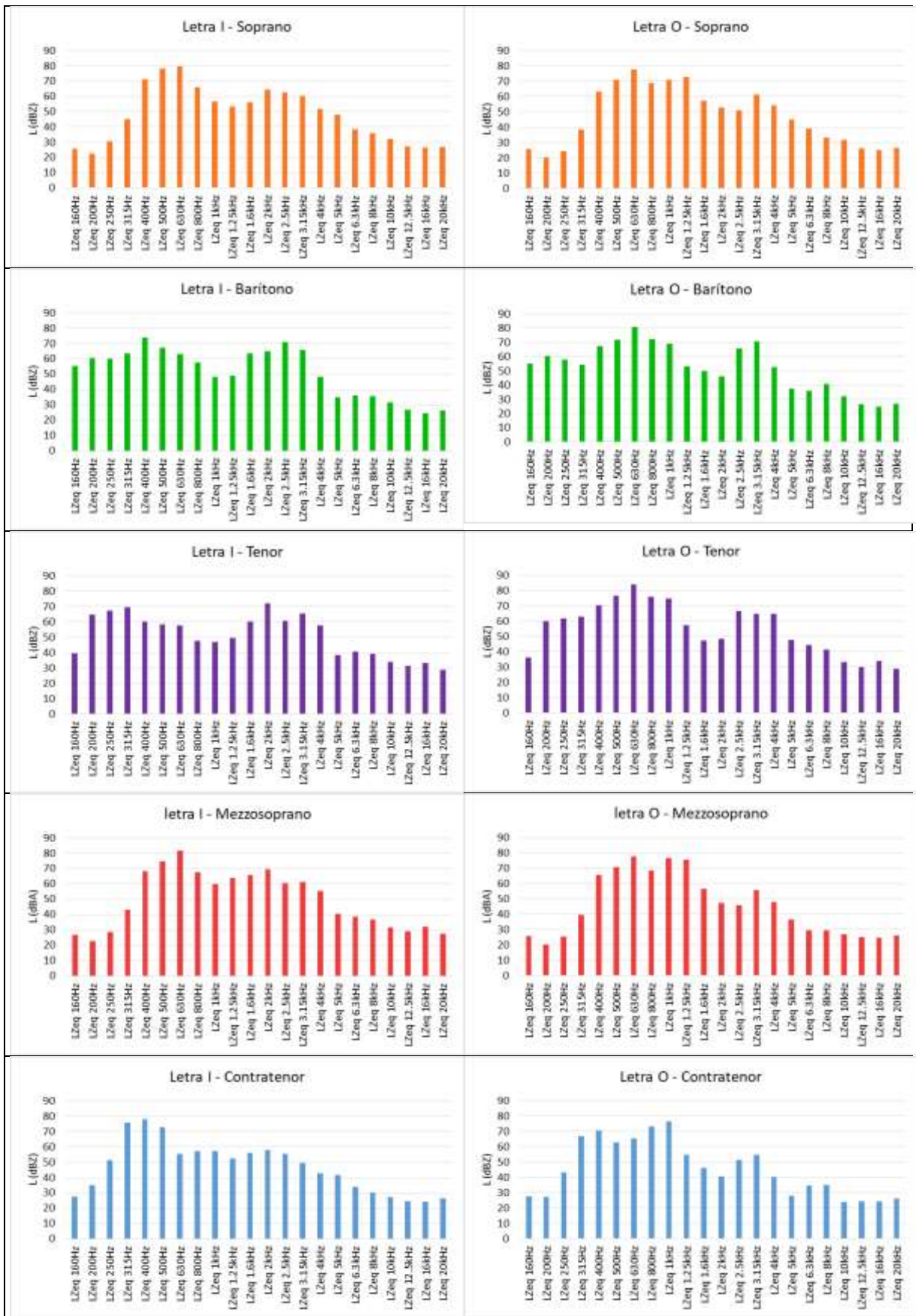


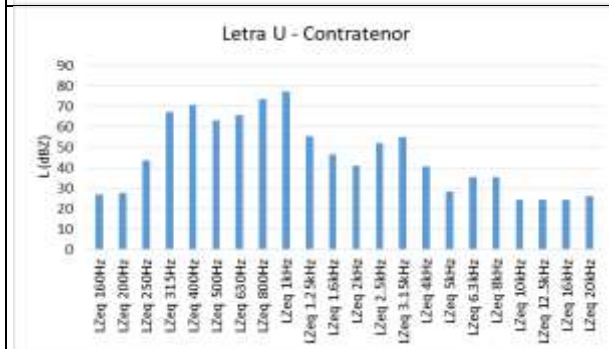
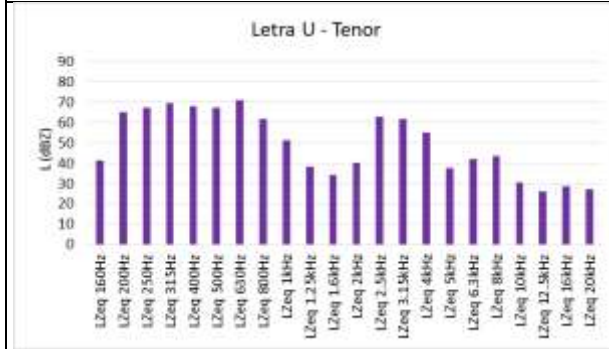


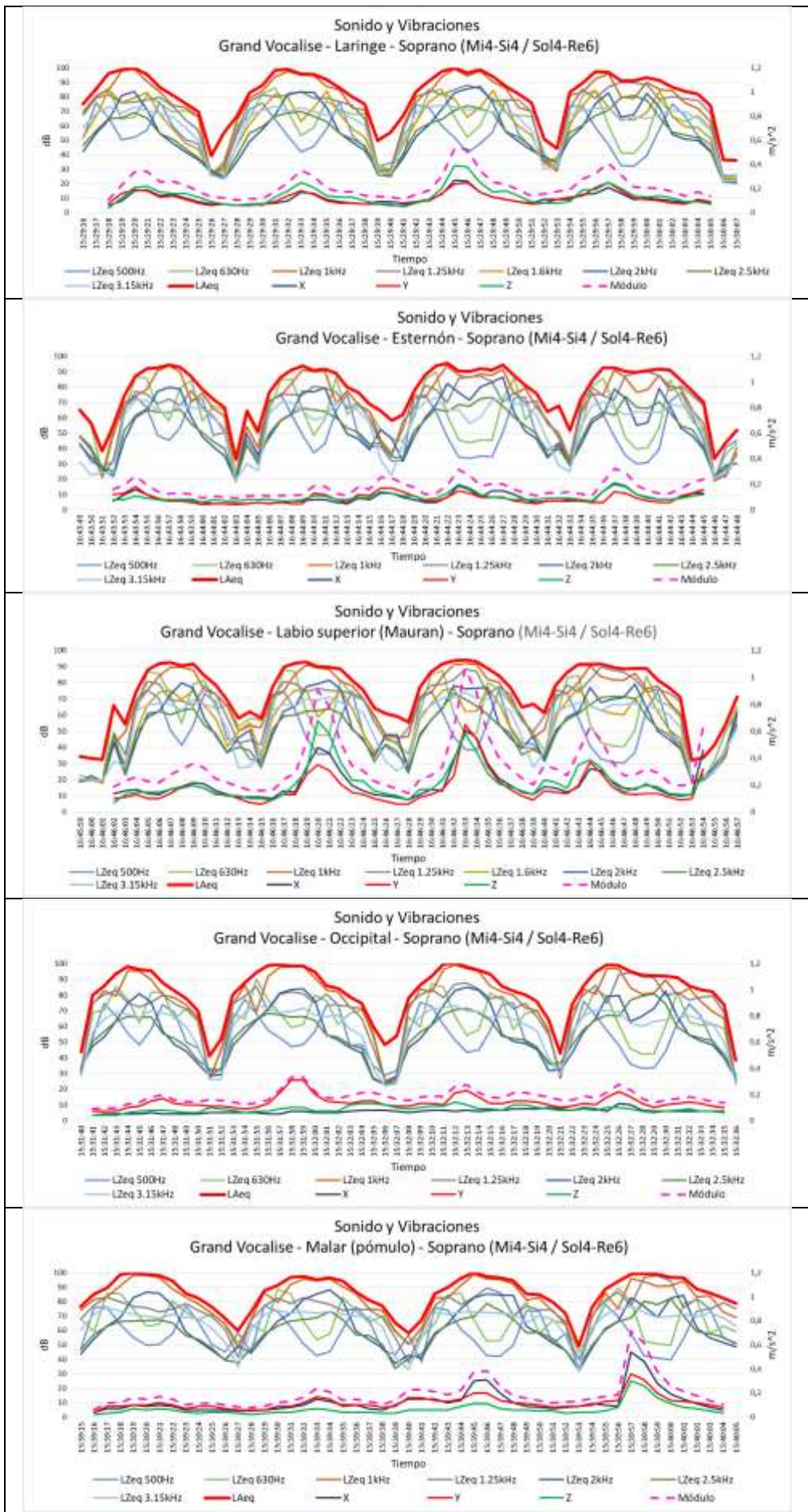


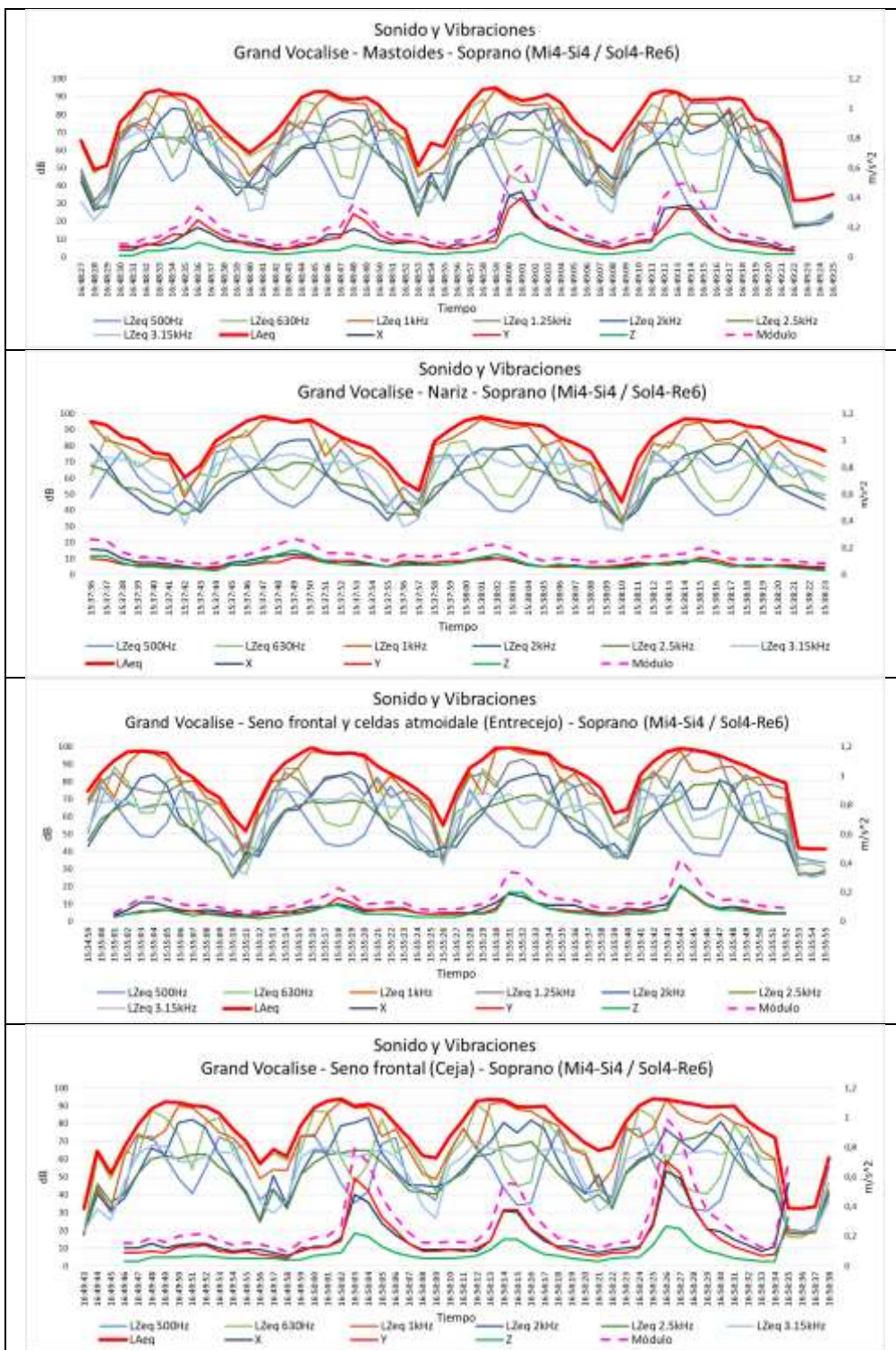
# STACCATO + LEGATO

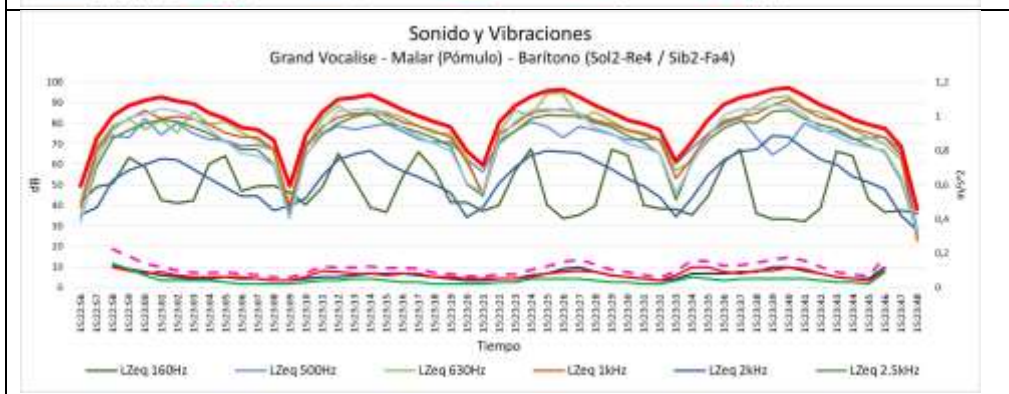
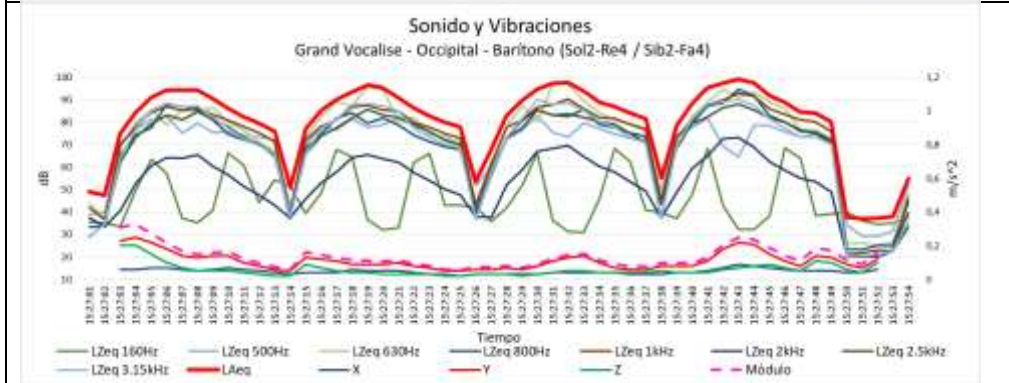
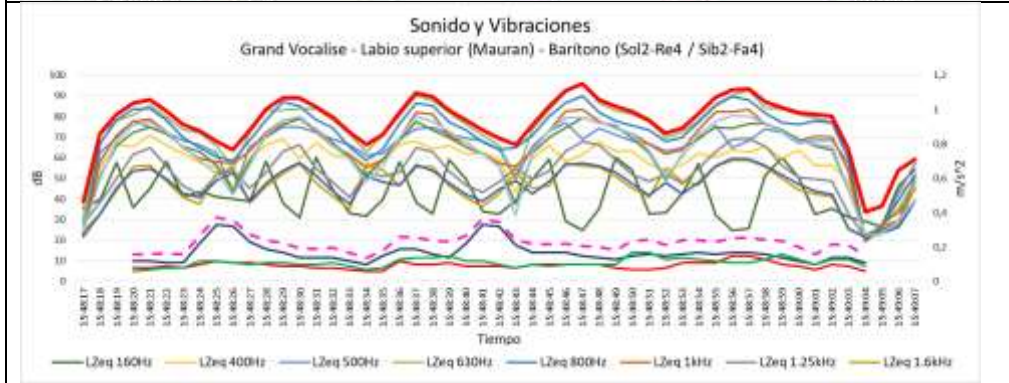
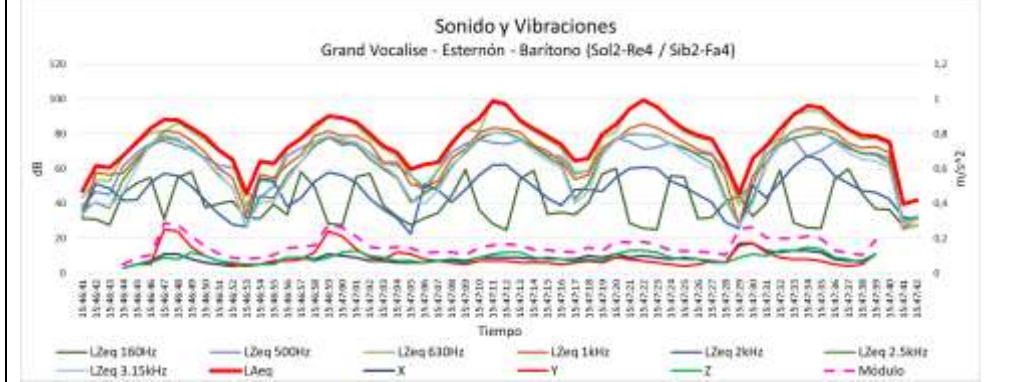
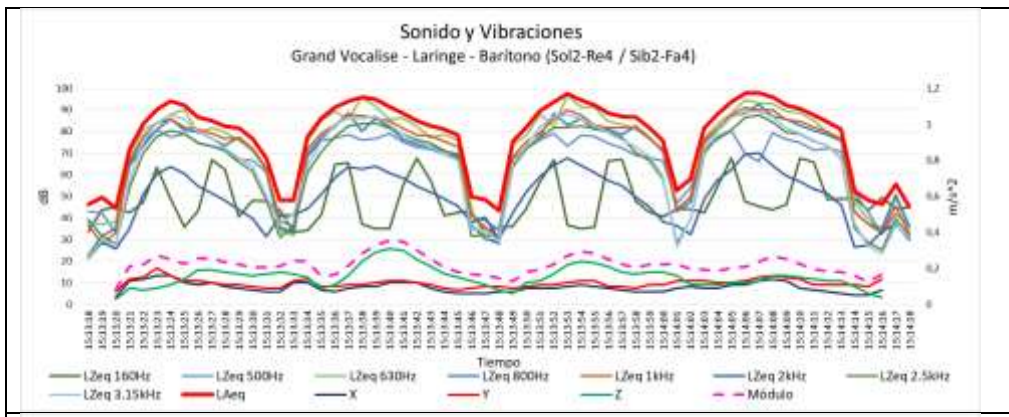


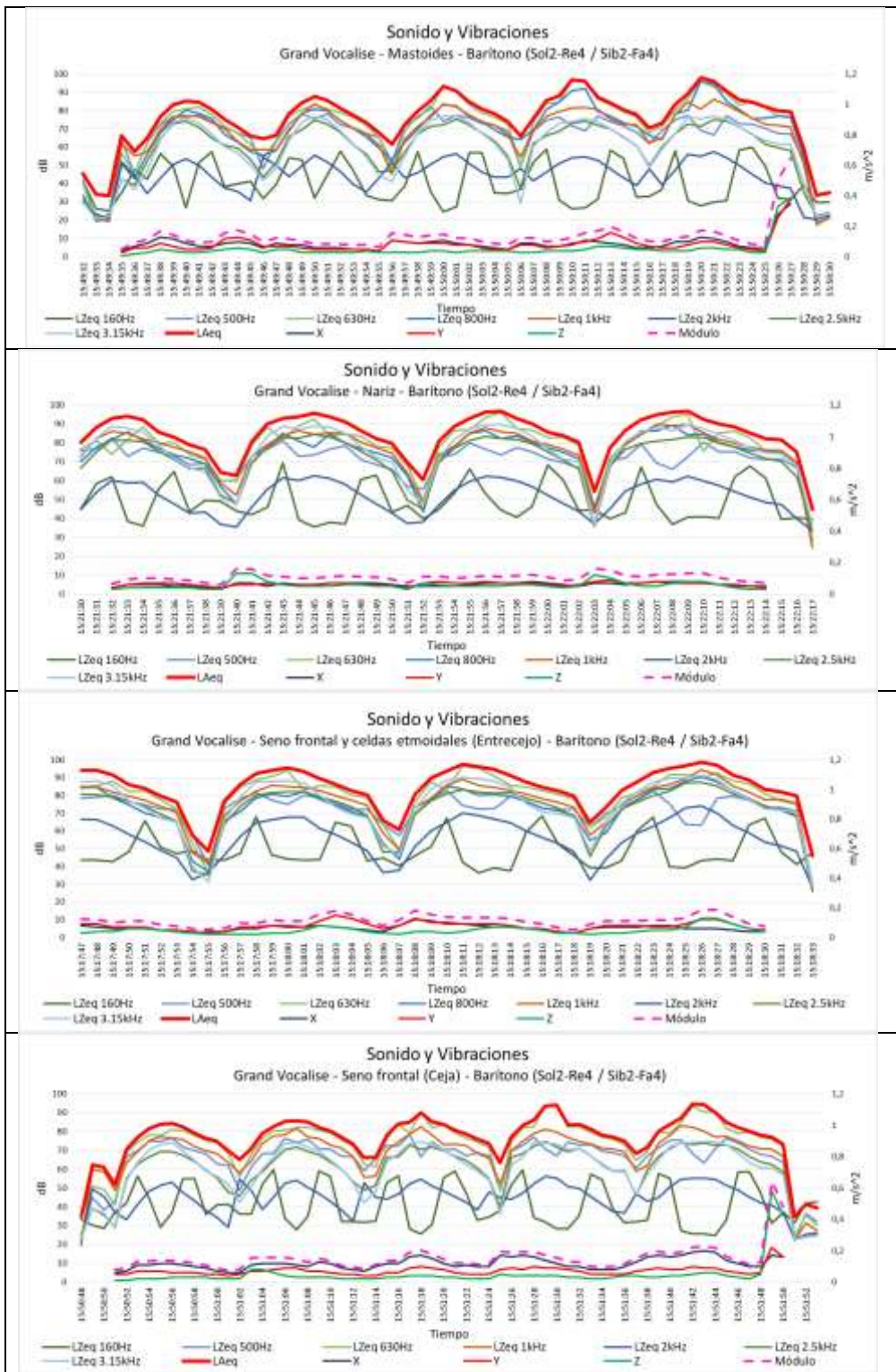


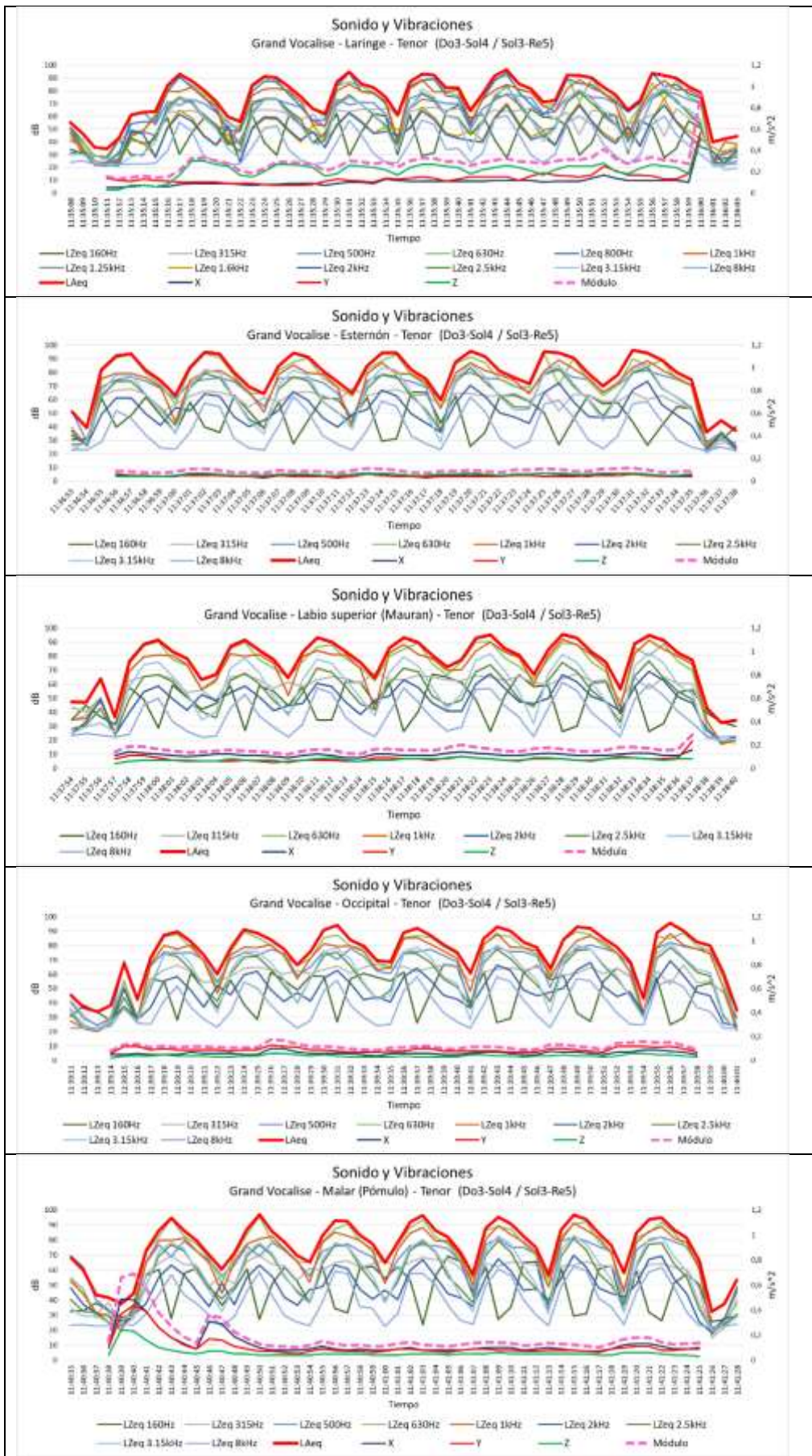


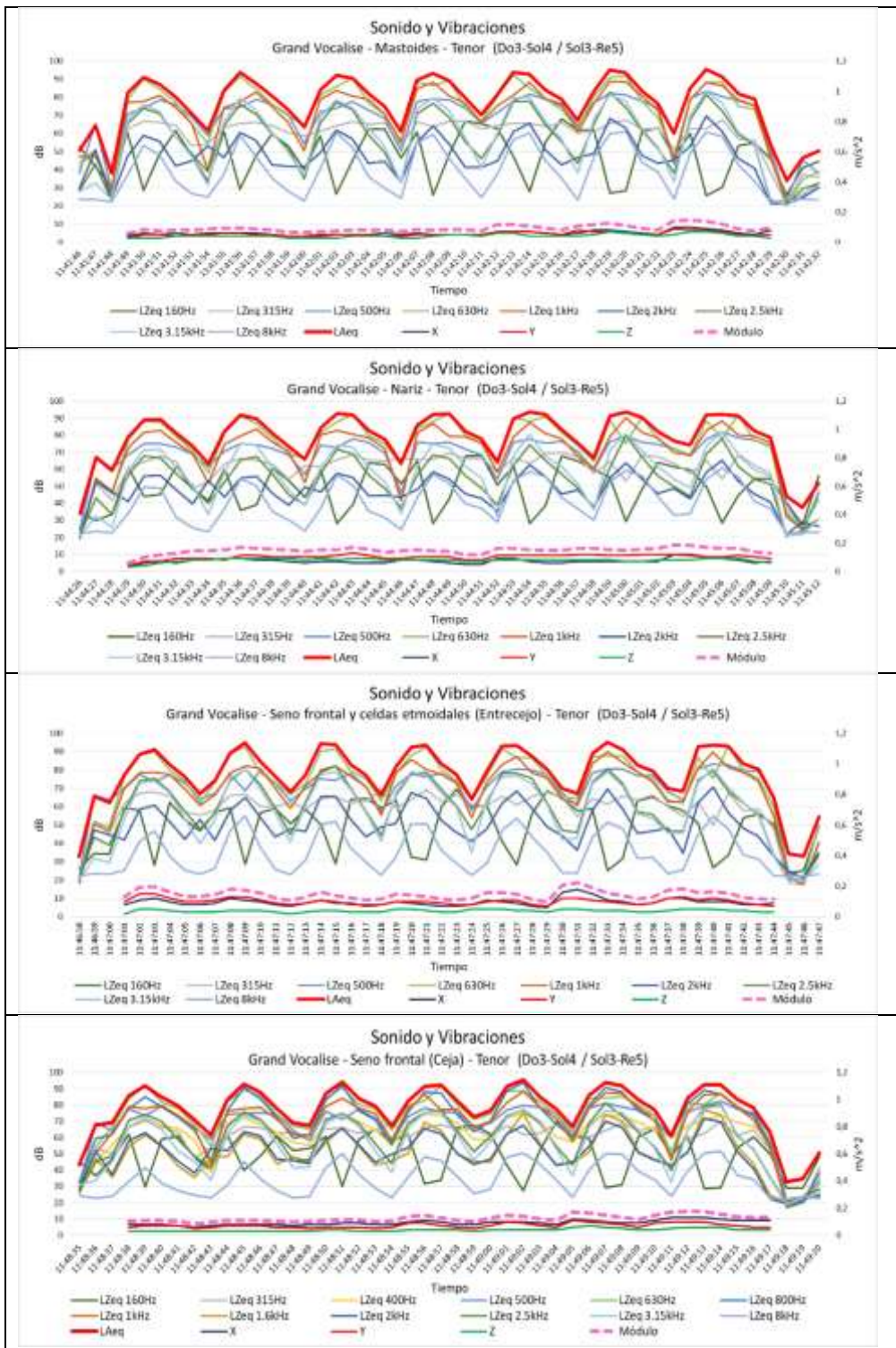


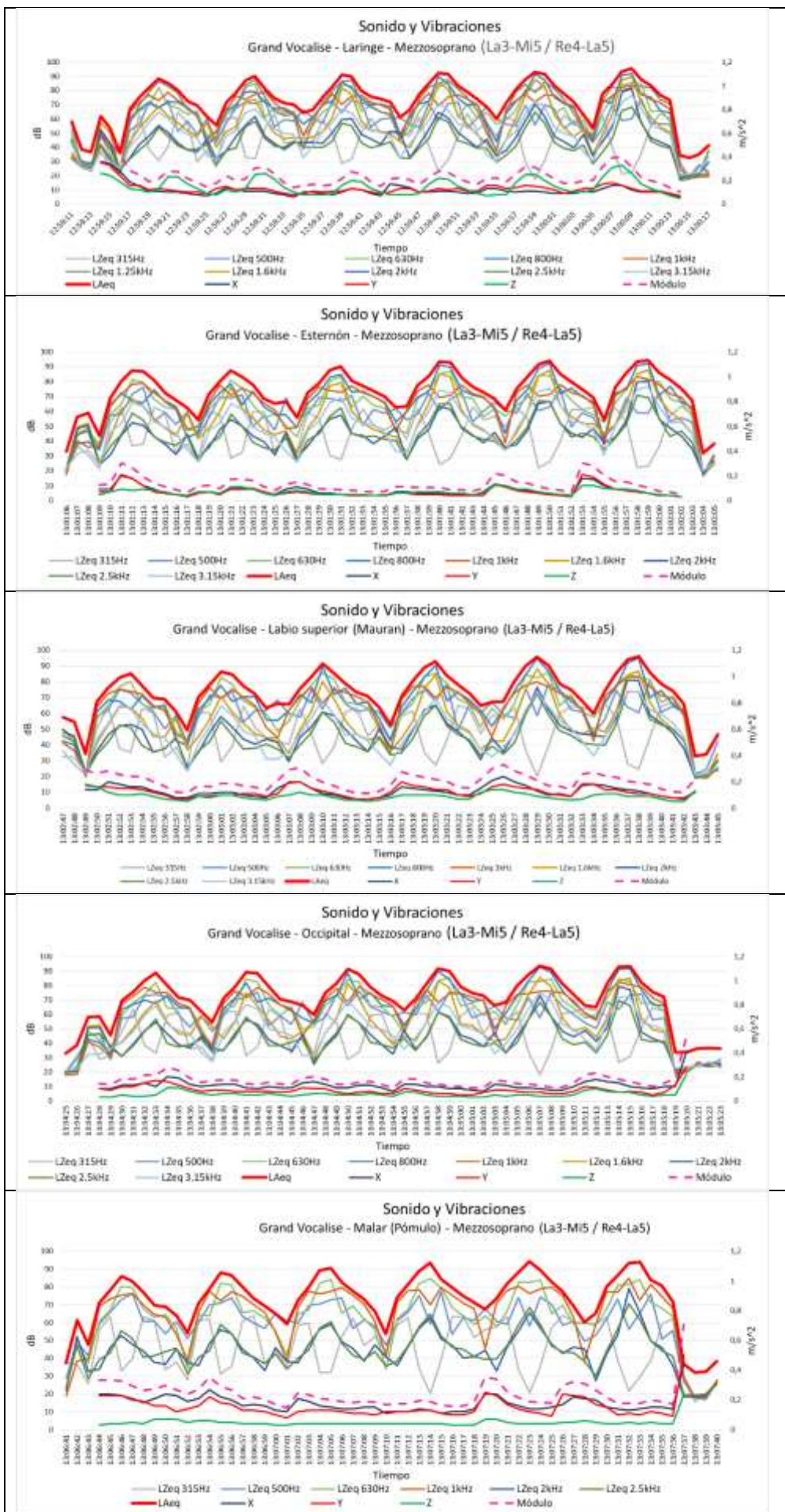


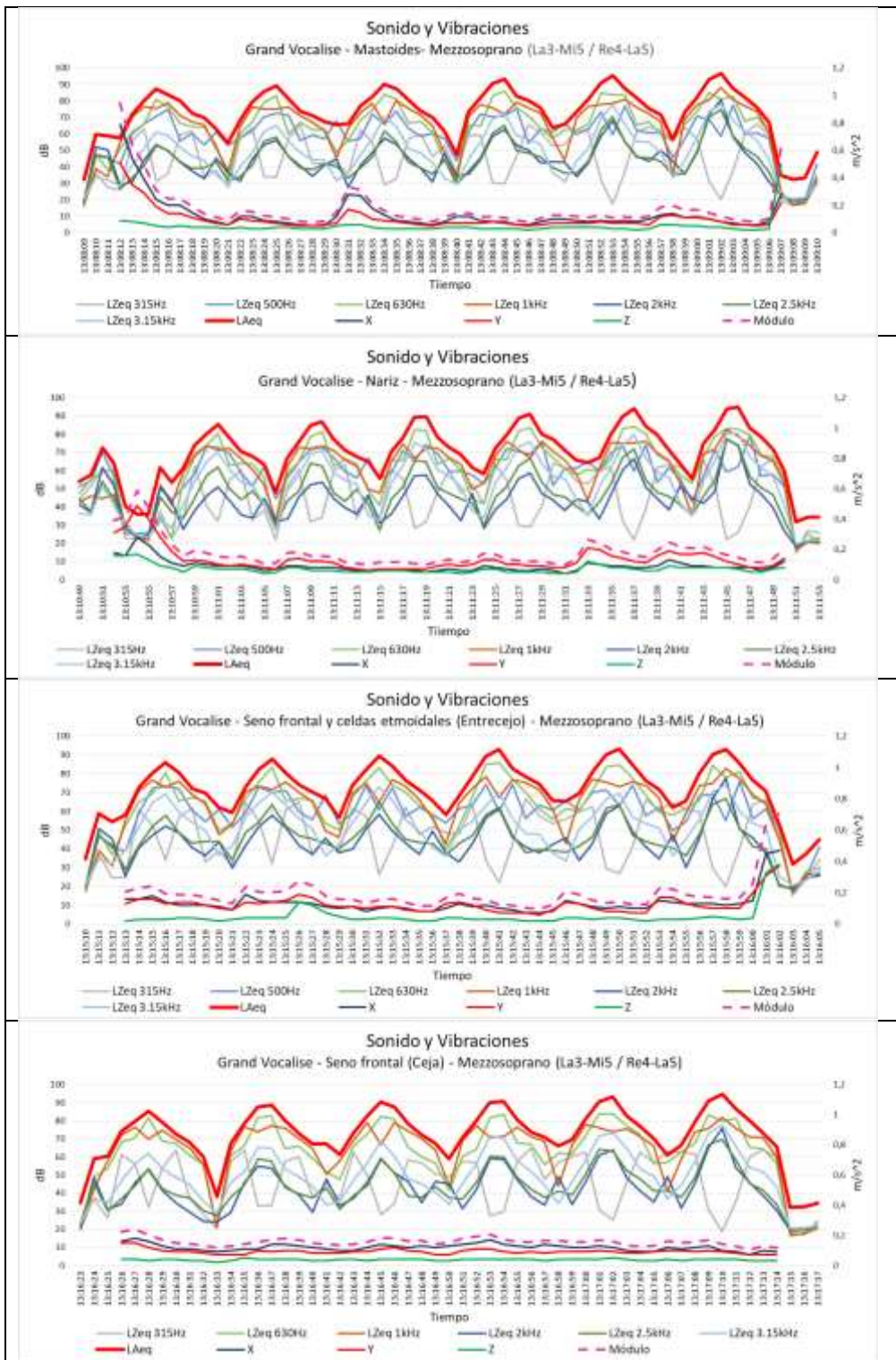




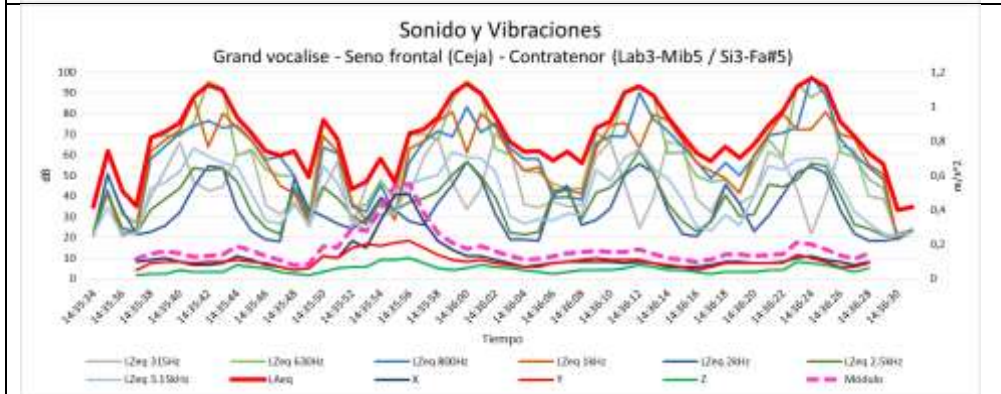
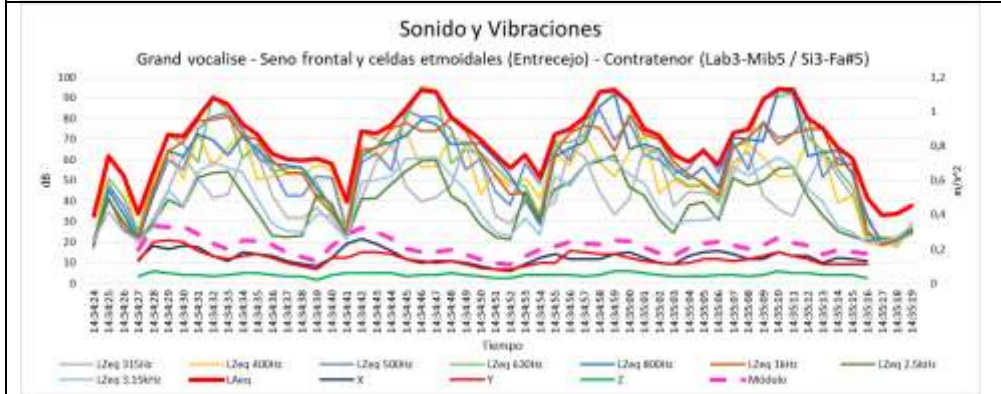
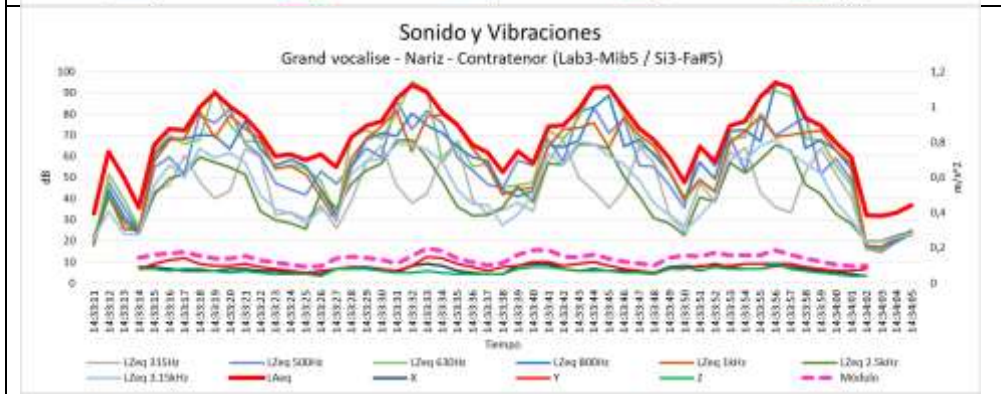
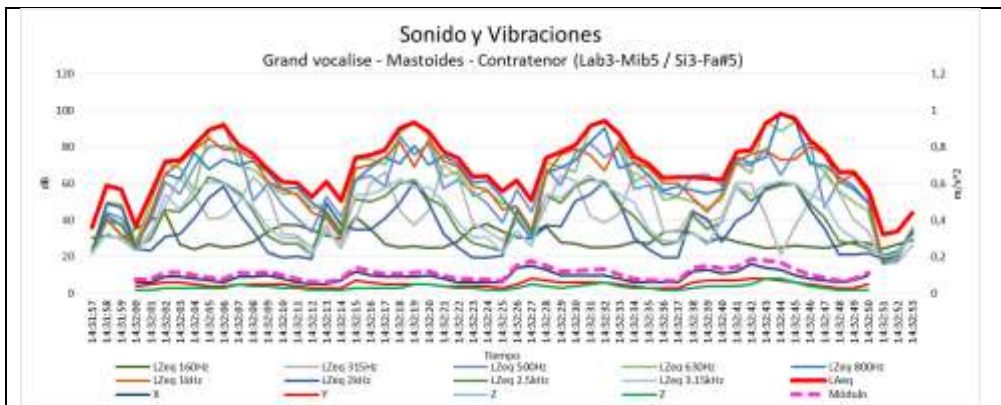












# GRAND VOCALISE

