

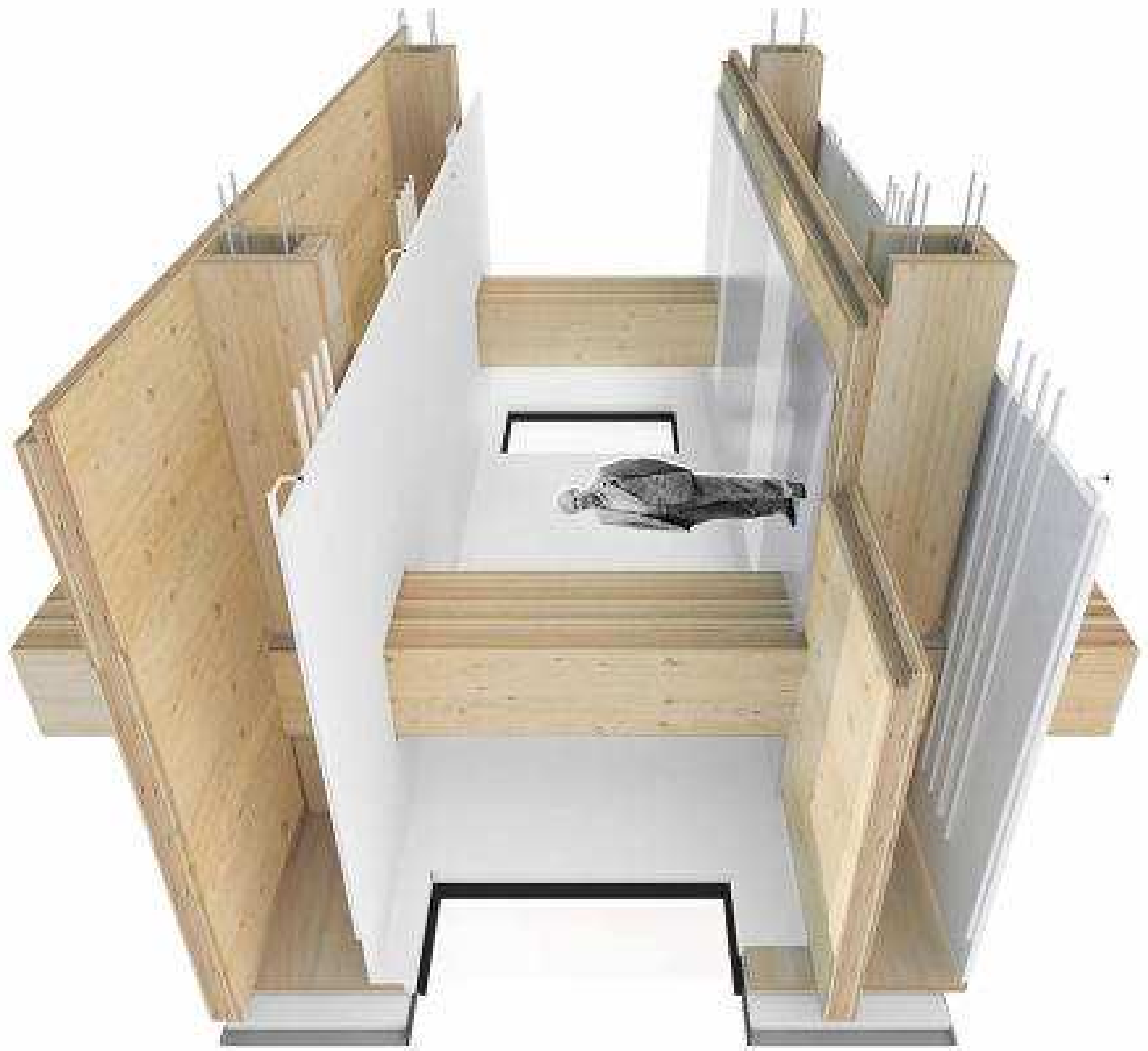
# ***WORLD'S MOST ADVANCED BUILDING MATERIAL IS...***

Principal

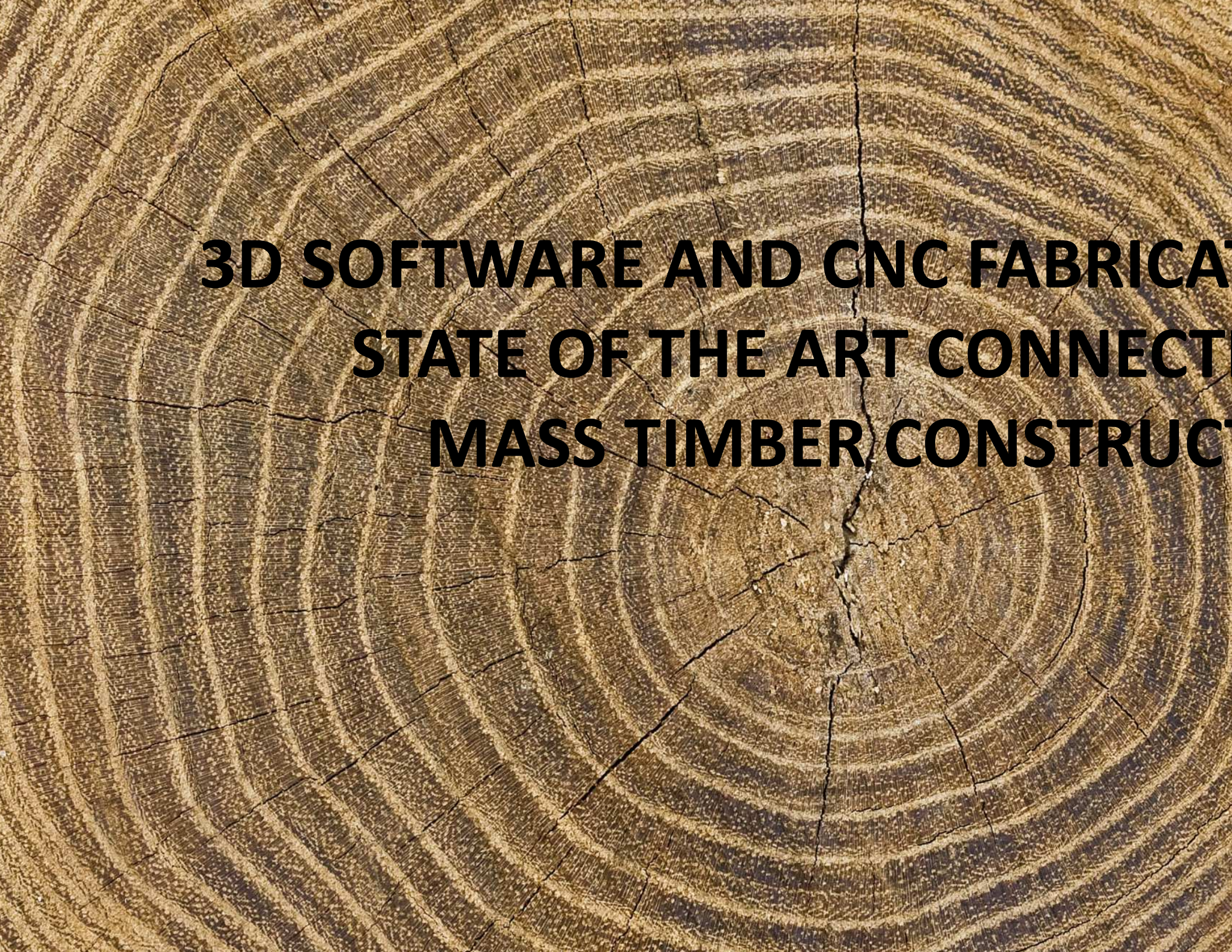
Montevideo, Uruguay  
2018



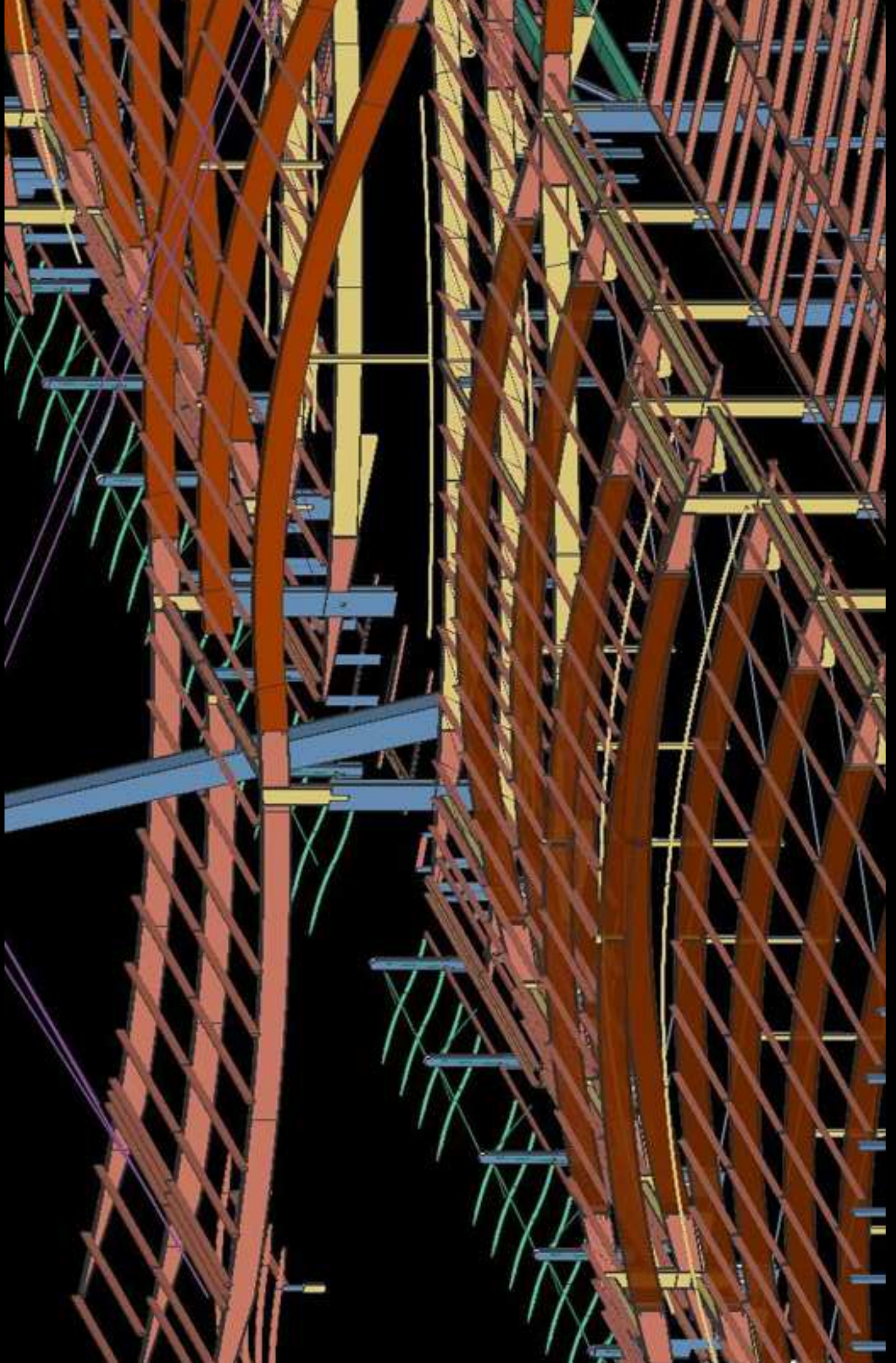






A close-up photograph of a tree trunk cross-section, showing concentric growth rings and radial cracks. The wood is a warm, golden-brown color. The text is overlaid in the center-right area.

**3D SOFTWARE AND CNC FABRICATION  
STATE OF THE ART CONNECTIONS  
MASS TIMBER CONSTRUCTION**









GREEN

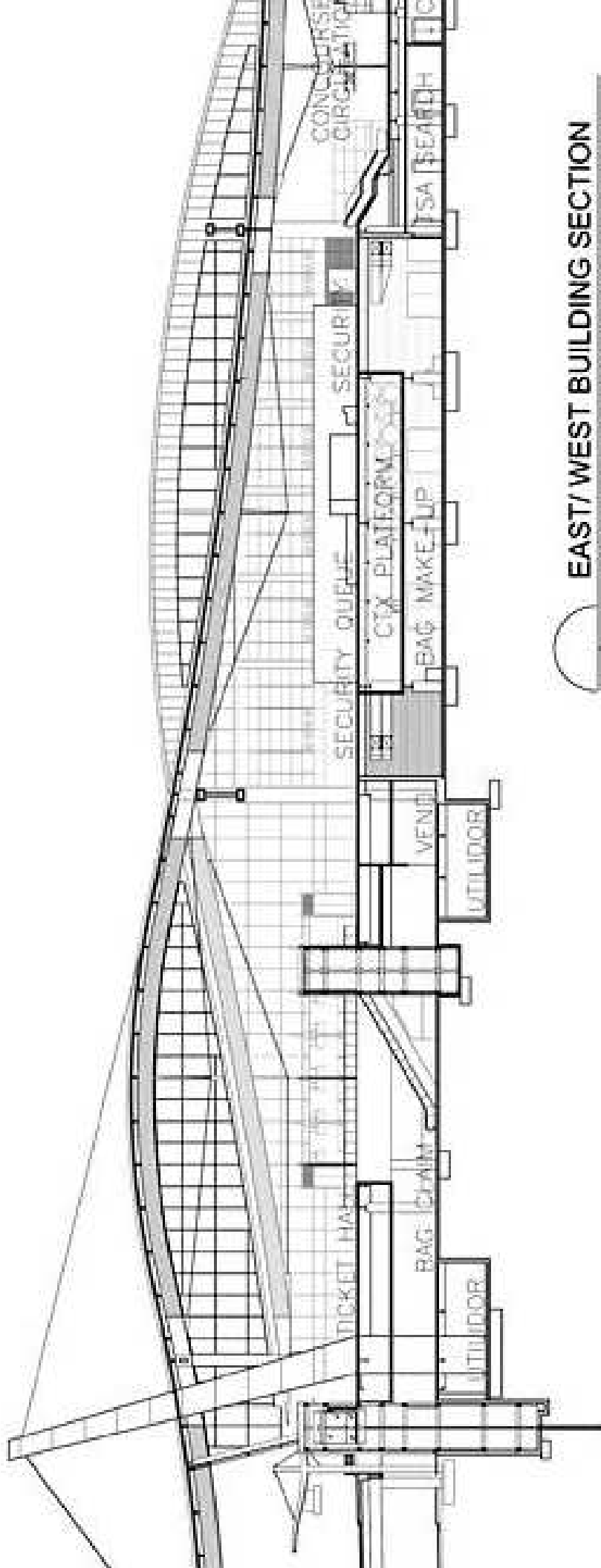








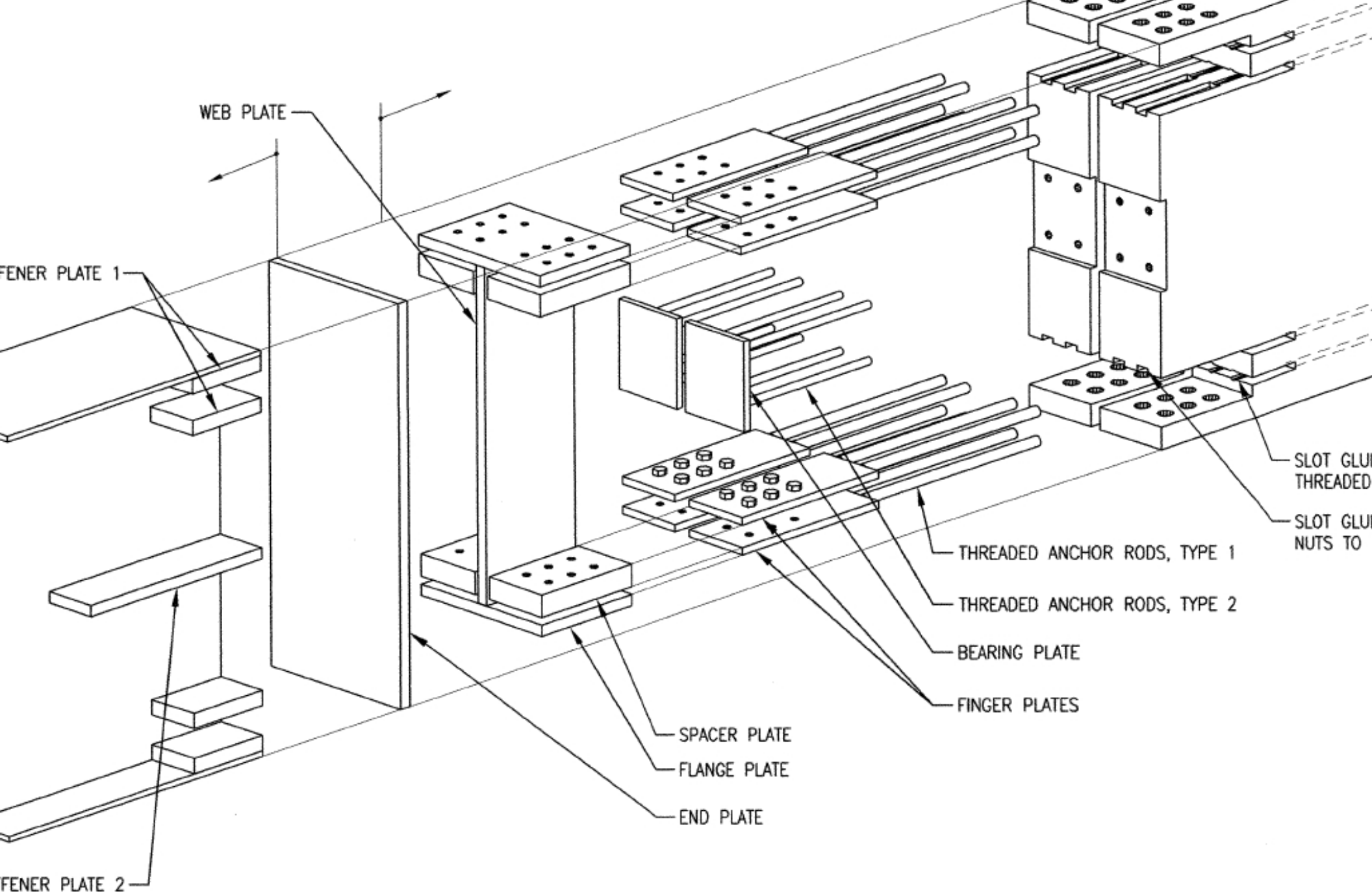
## DURHAM AIRPORT – TERMINAL C EXPANSION



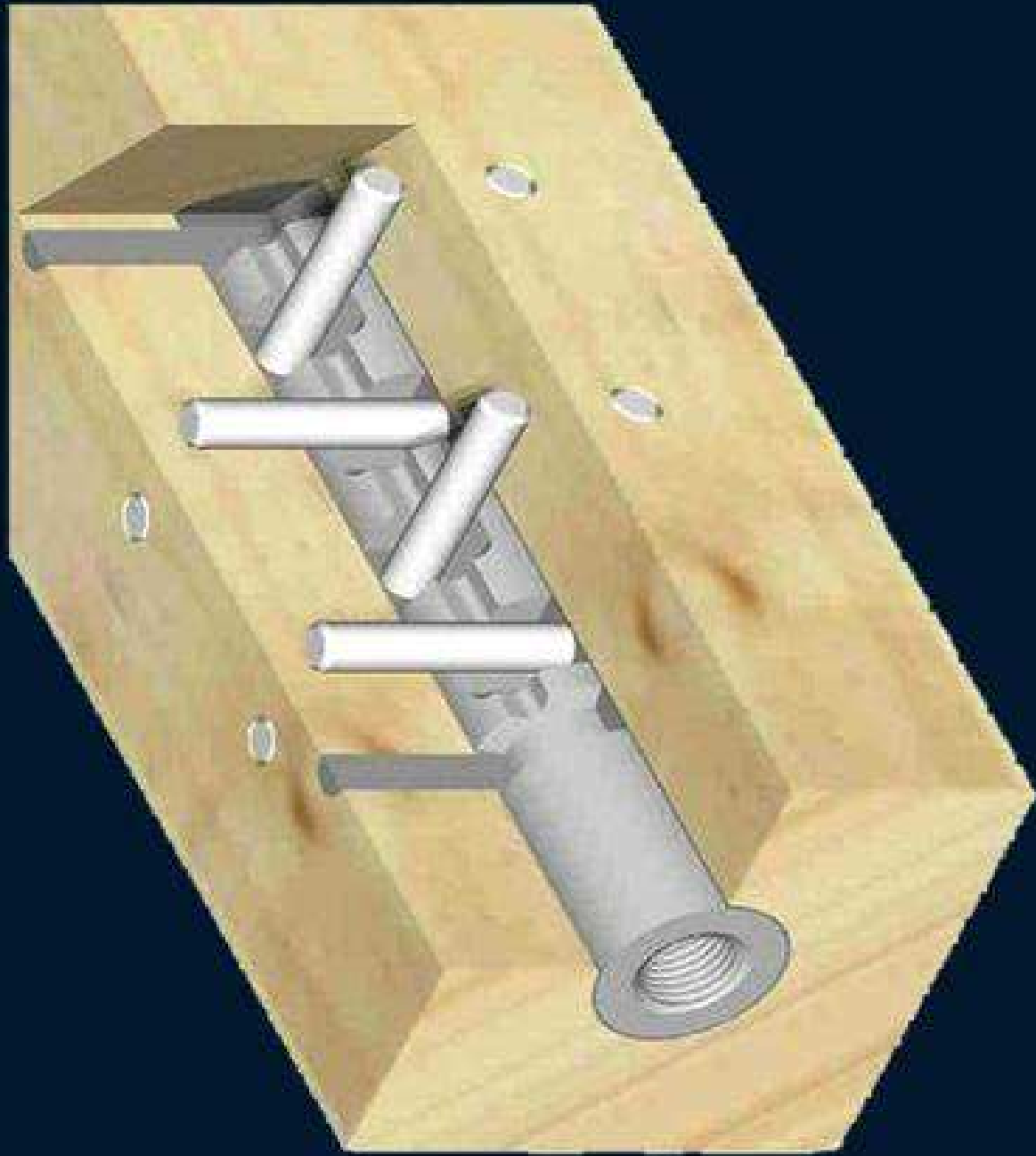
**EAST/WEST BUILDING SECTION**

SCALE:

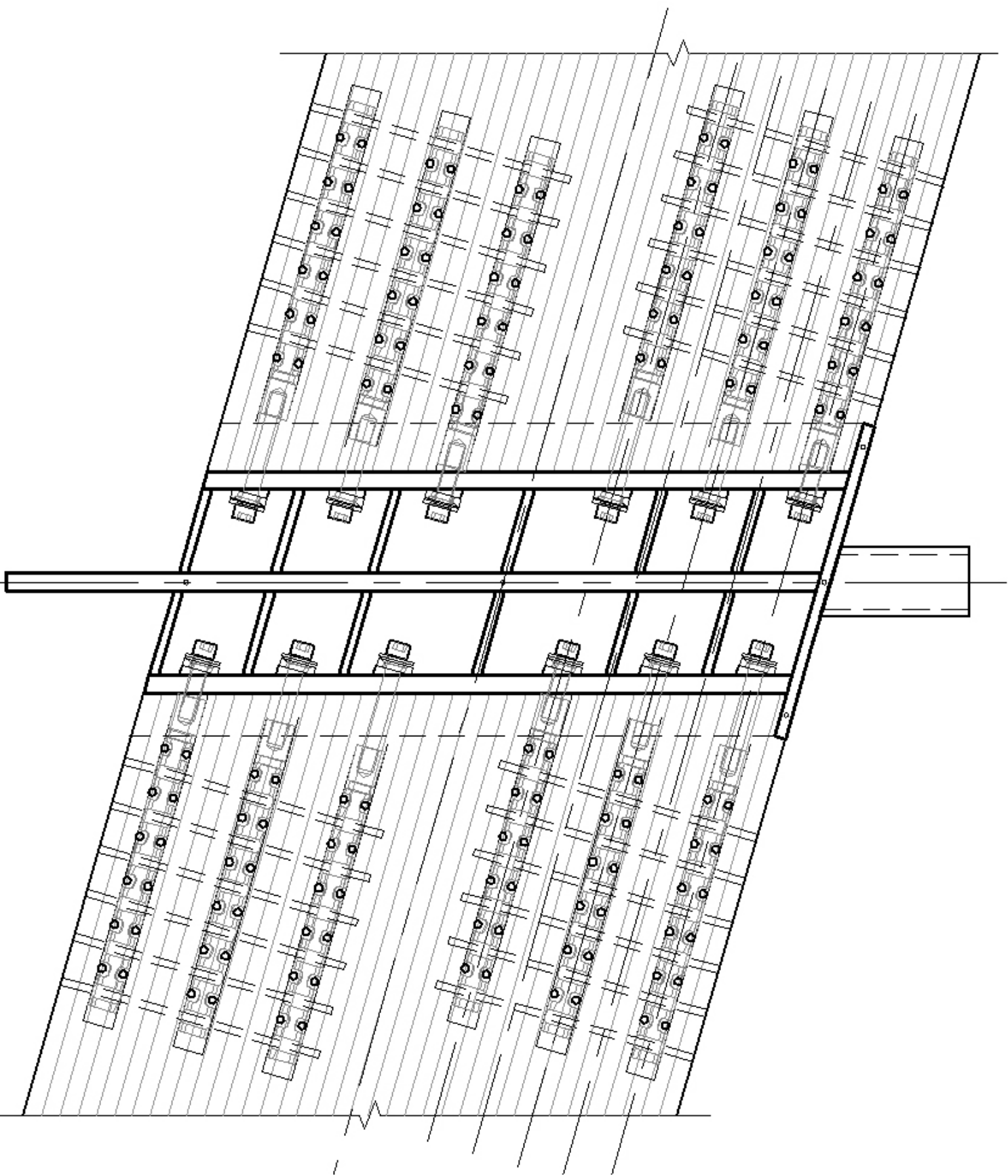




**Original Glued-in Rod Tail Connection**









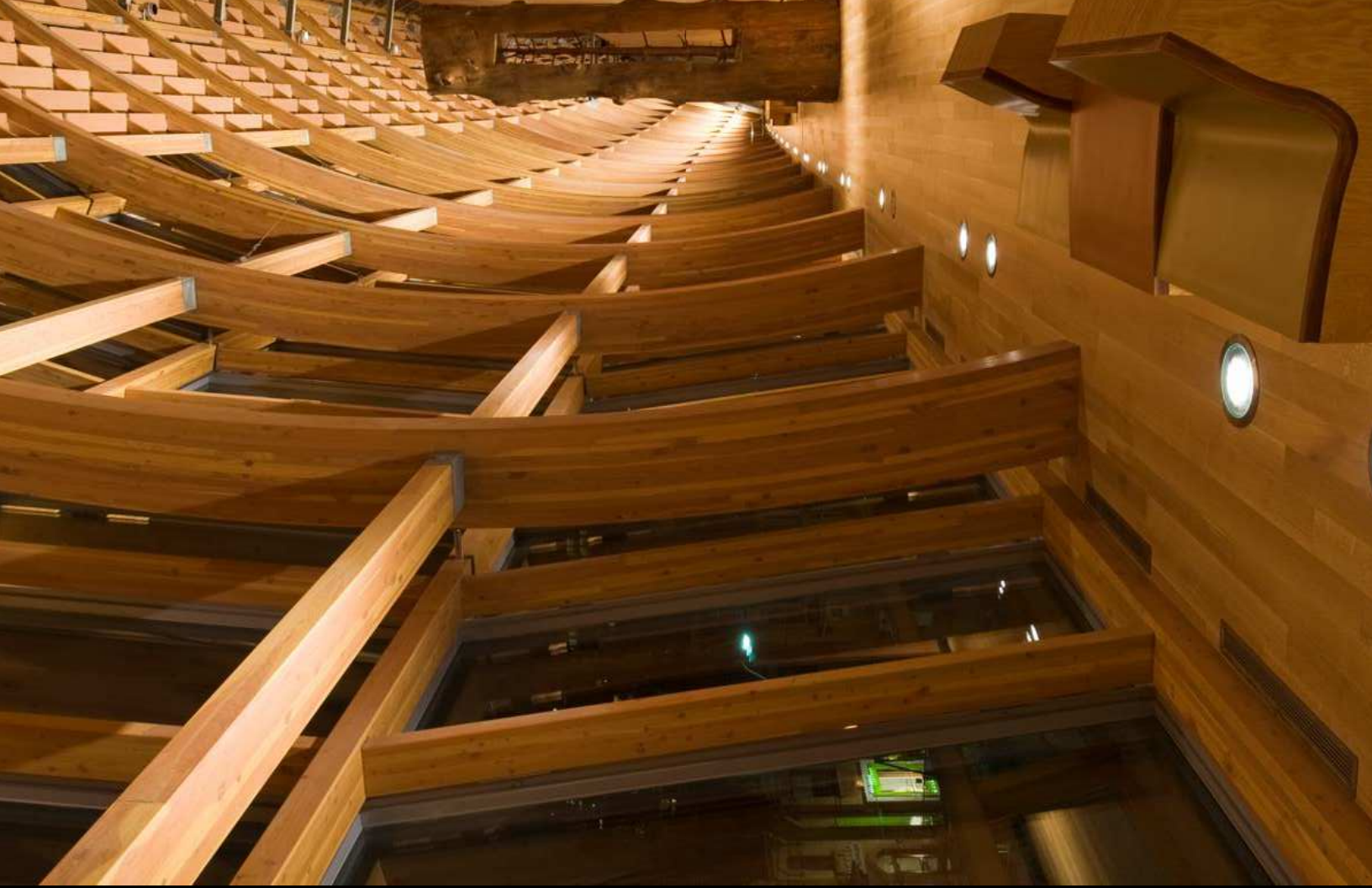


← All Gates  
Meeting Place  
Oversize Bag  
Drop-off

↑ All Gates  
Oversize Bag  
Drop-off



RY OF ONTARIO – GALLERIA ITALIA





A detailed close-up photograph of a tree trunk's cross-section. The image shows numerous concentric growth rings, each composed of alternating light and dark wood layers. Several prominent radial cracks run through the wood, starting from the center and extending towards the outer edge. The overall color is a warm, golden-brown hue.

# Mass Timber Constr

# TIMBER SYSTEM



**POST AND BEAM**

1000s Old



**STICK FRAME**

Last Century



**SOLID CONSTRUCTION**

Last 25 Y.



**L Veneer Lumber (LVL)**

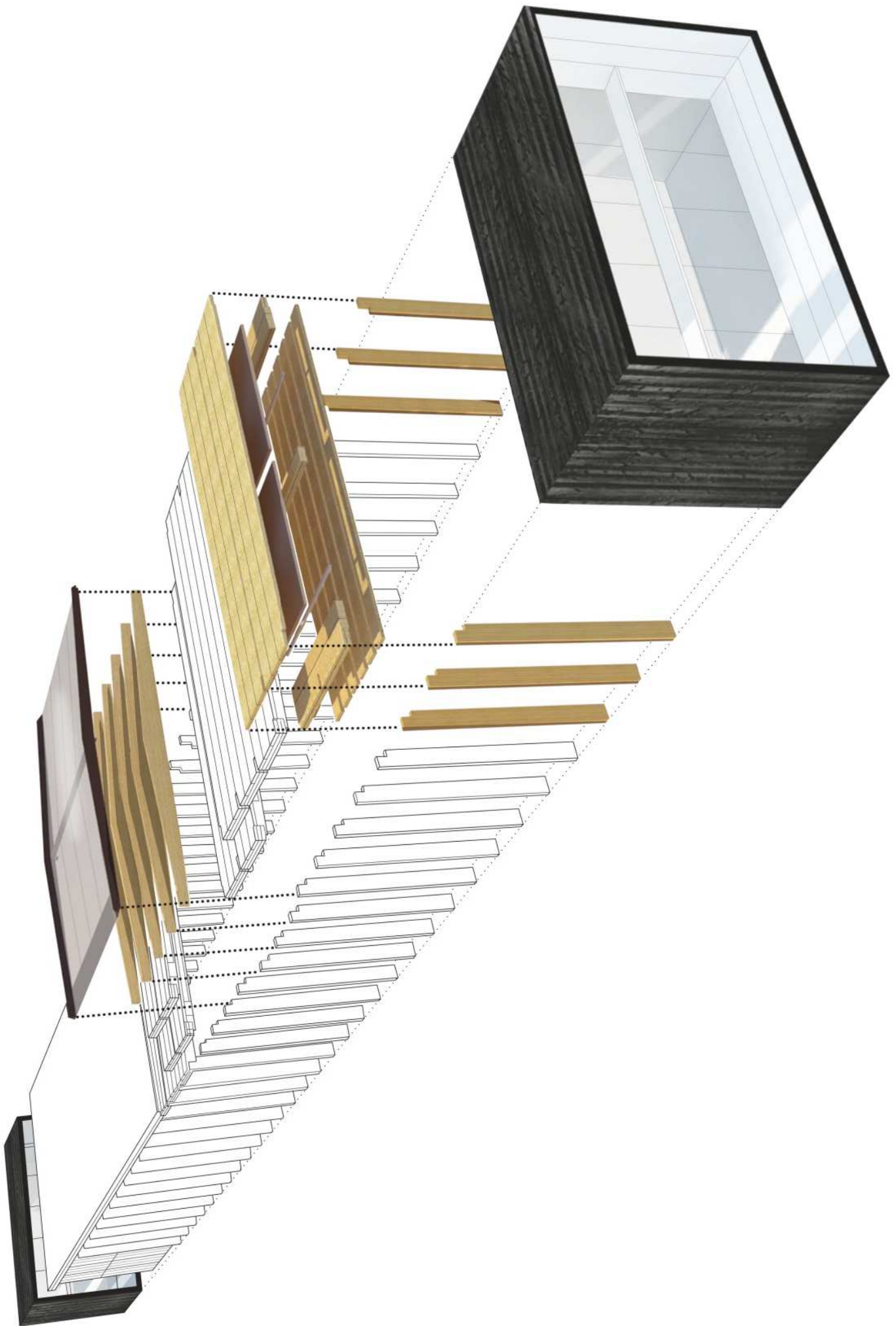


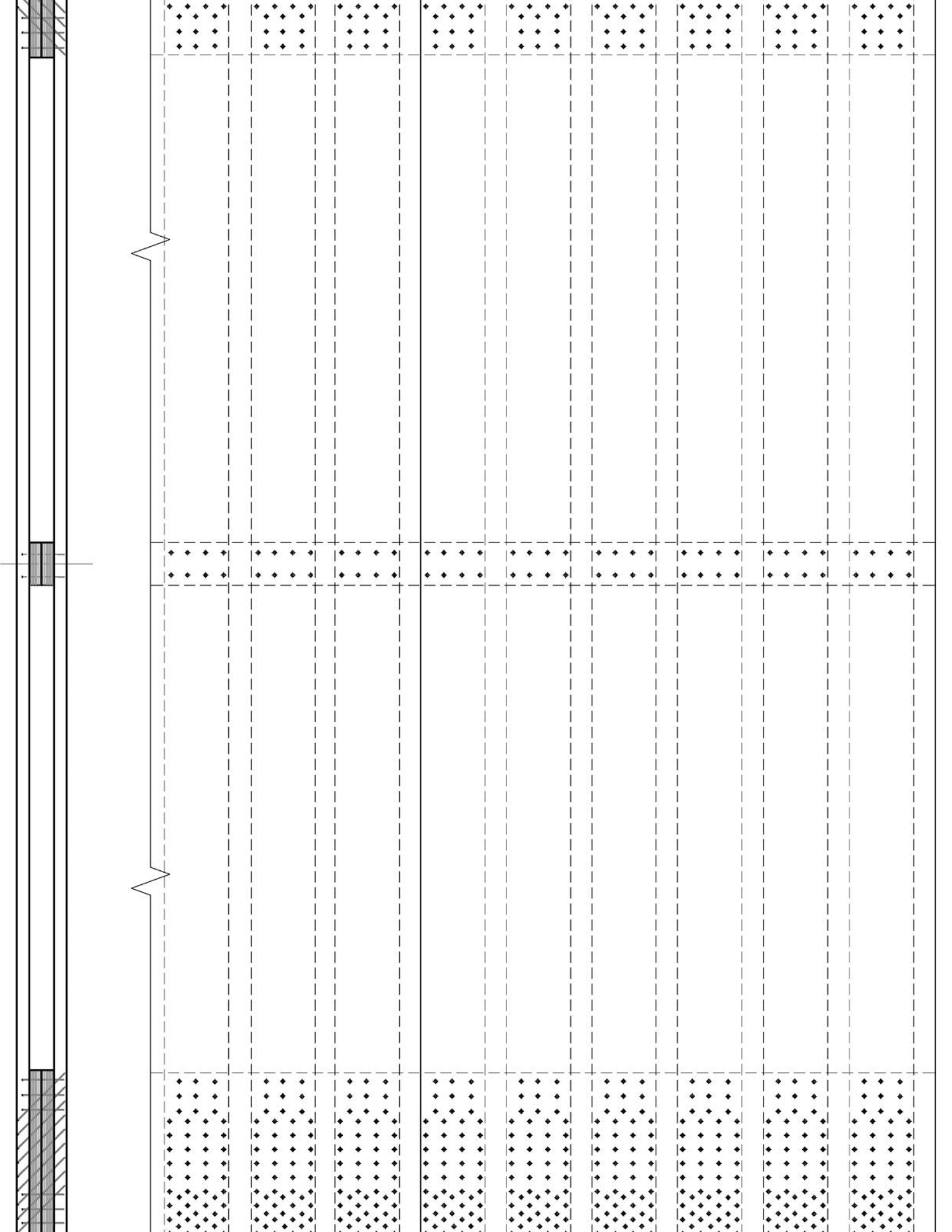
**laminated Timber (CLT)**



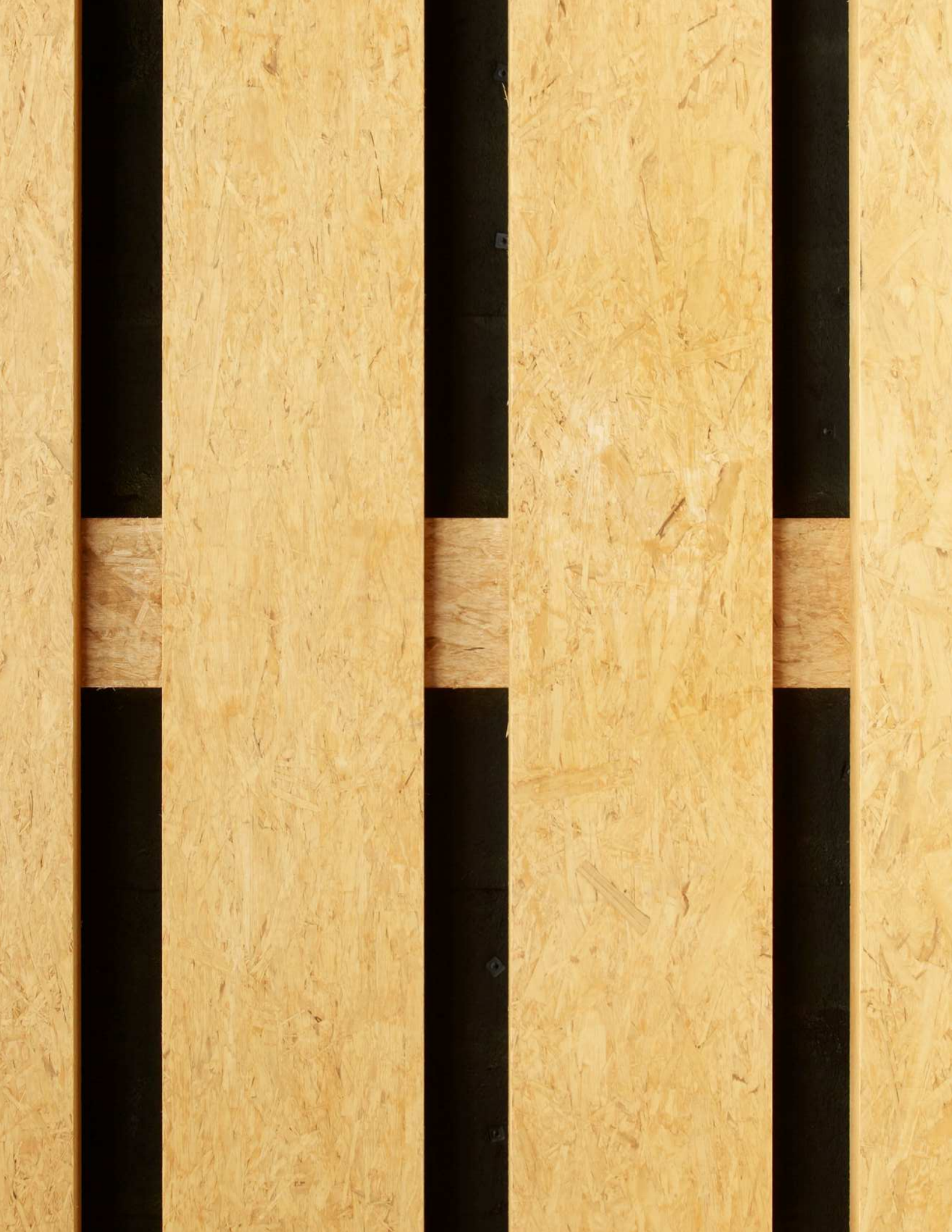


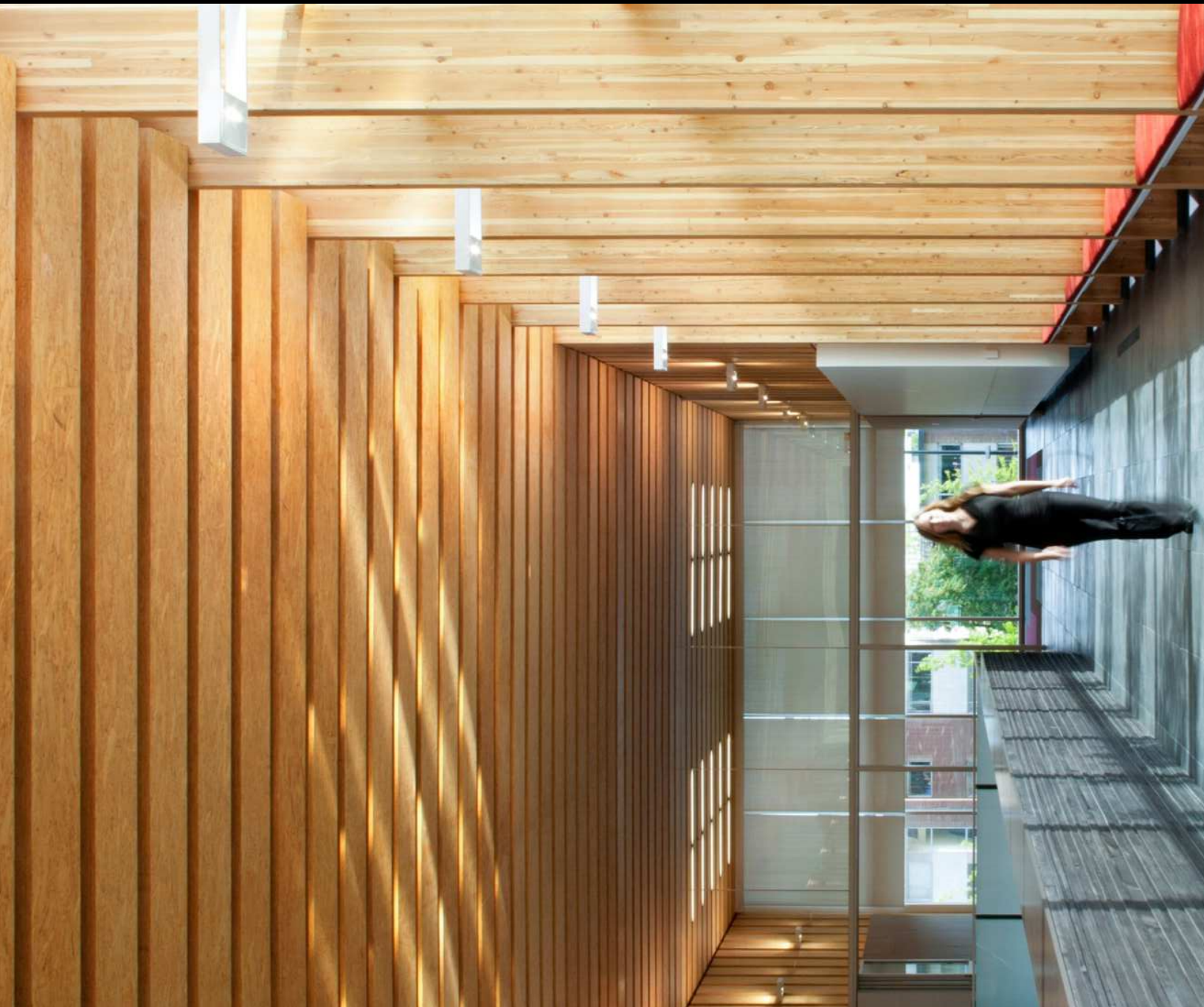


























USB Test Fiber  
Test 1





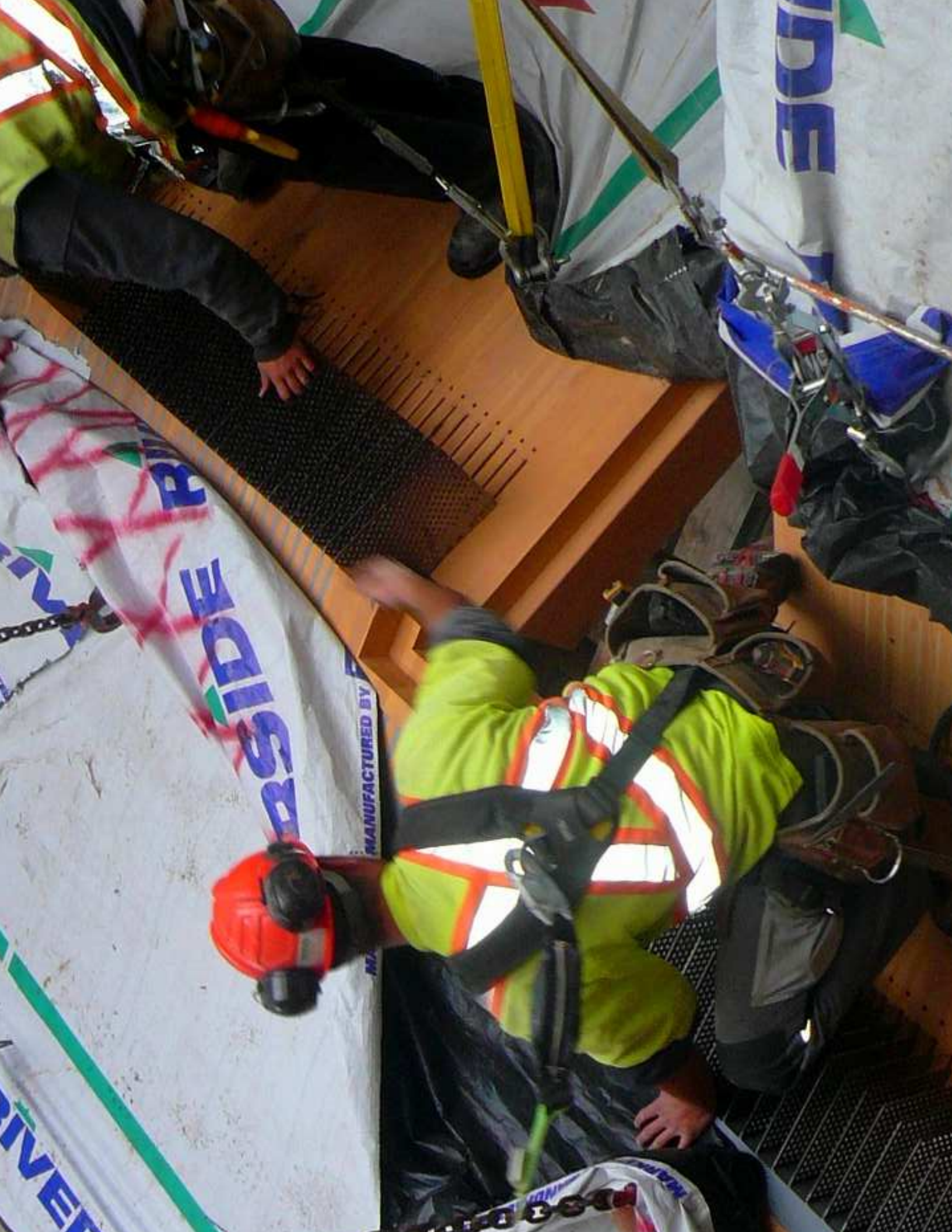




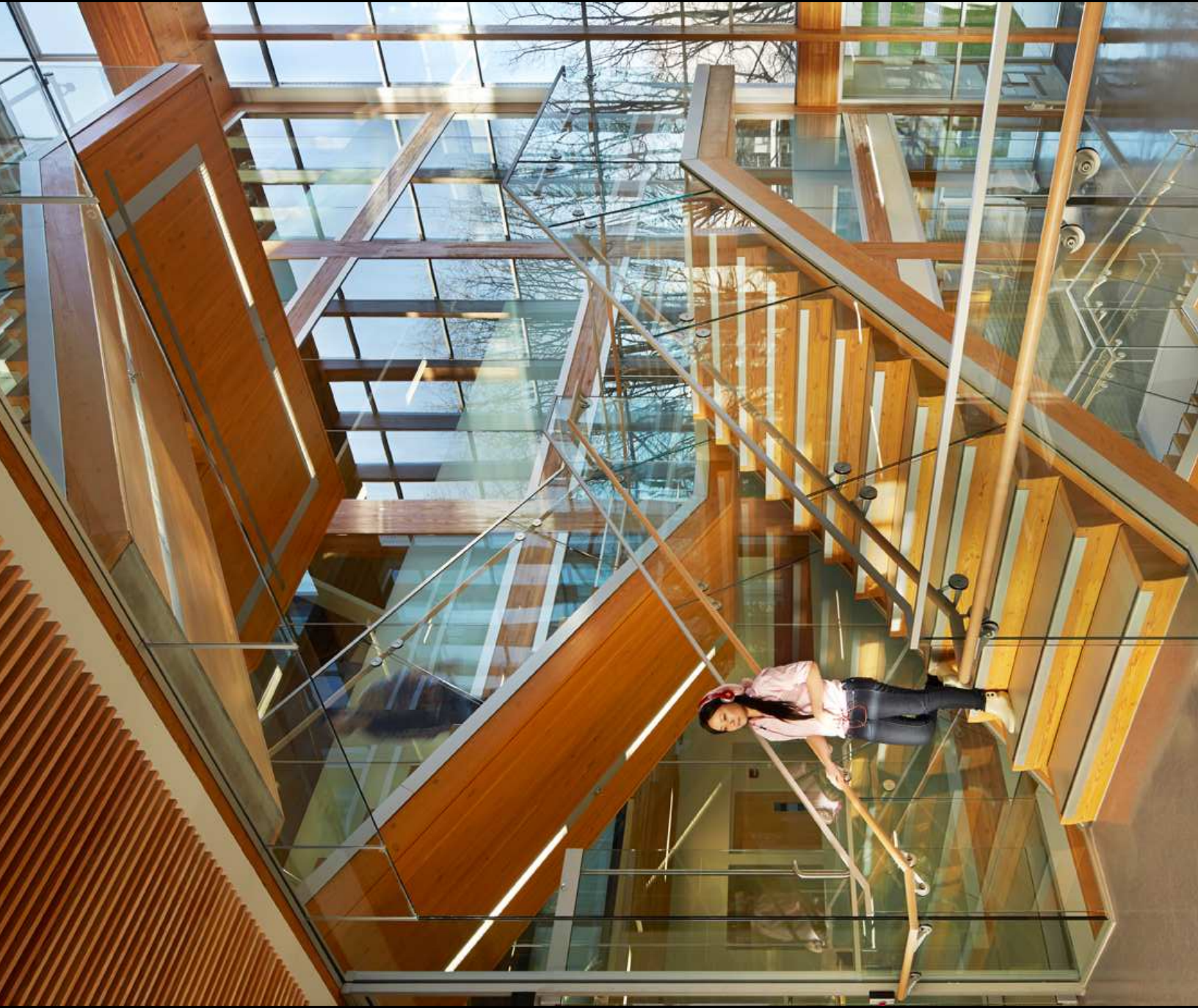




















HADLAMORE

**Hill International**  
The Hill Group of Companies  
1111 11th Street, Suite 1000  
Denver, CO 80202  
Tel: 303.733.1111  
www.hillinternational.com

**Urbis Building**  
1111 11th Street  
Denver, CO 80202  
Tel: 303.733.1111  
www.hillinternational.com

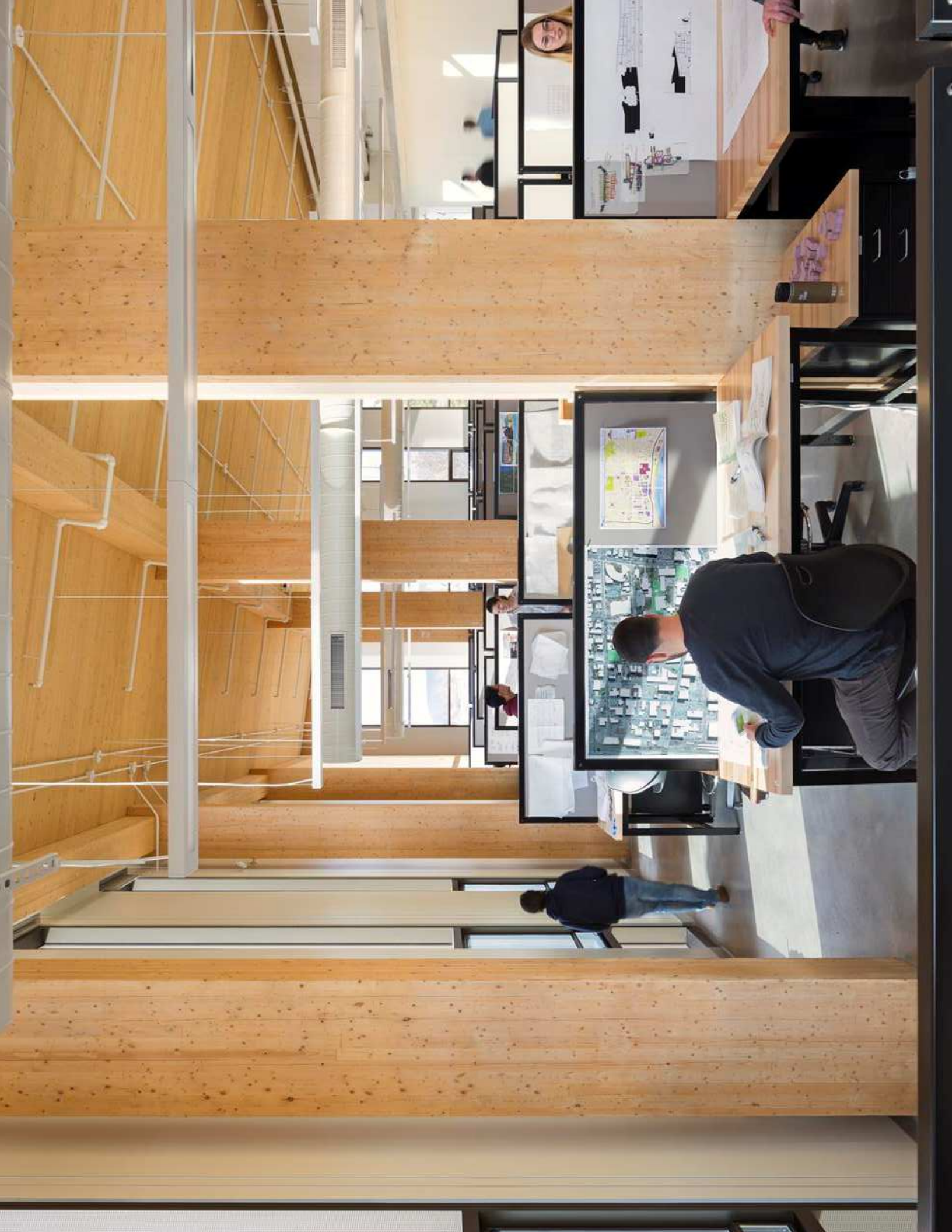


1-800-UR-RENTS







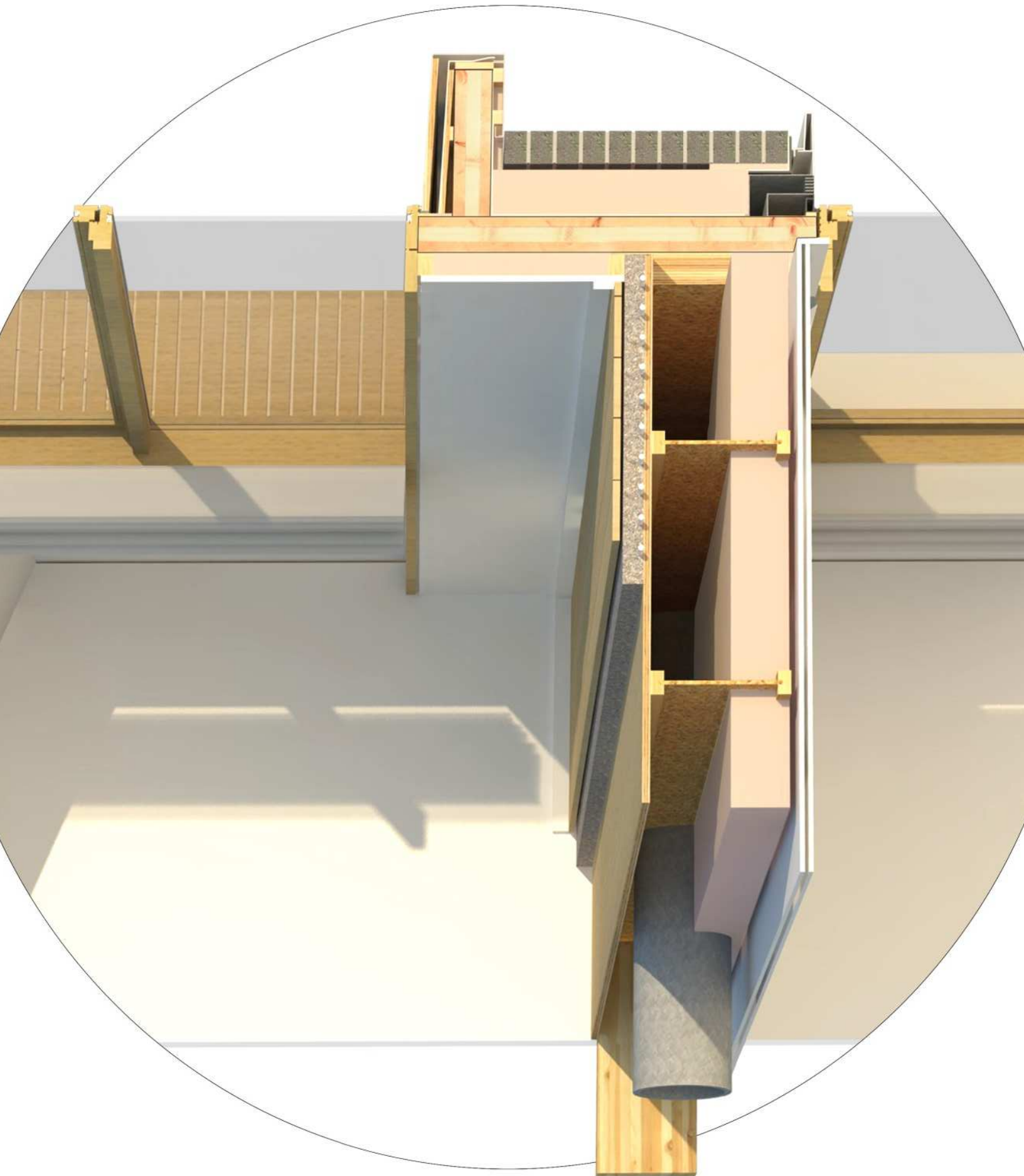














SHELTER I

Quant







Tyvek COMMERCIAL WRAP

Tyvek COMMERCIAL WRAP

Tyvek COMMERCIAL WRAP

Tyvek COMMERCIAL WRAP

Tyvek COMMERCIAL WRAP

Tyvek COMMERCIAL WRAP

Tyvek COMMERCIAL WRAP

Tyvek COMMERCIAL WRAP

Tyvek COMMERCIAL WRAP

Tyvek COMMERCIAL WRAP

Tyvek COMMERCIAL WRAP

Tyvek COMMERCIAL WRAP

Tyvek COMMERCIAL WRAP

Tyvek COMMERCIAL WRAP

Tyvek COMMERCIAL WRAP

Tyvek COMMERCIAL WRAP

Tyvek COMMERCIAL WRAP







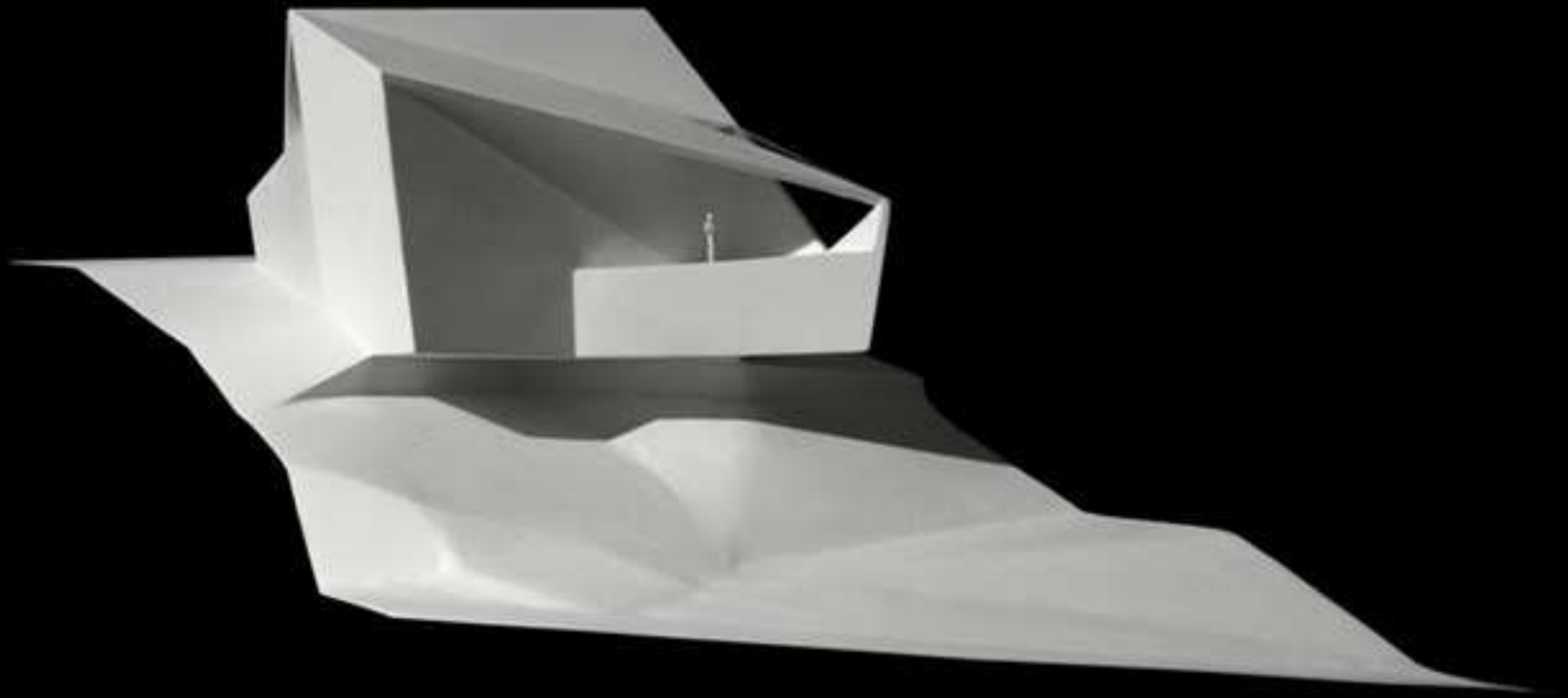








**PRE-FABRICAT**



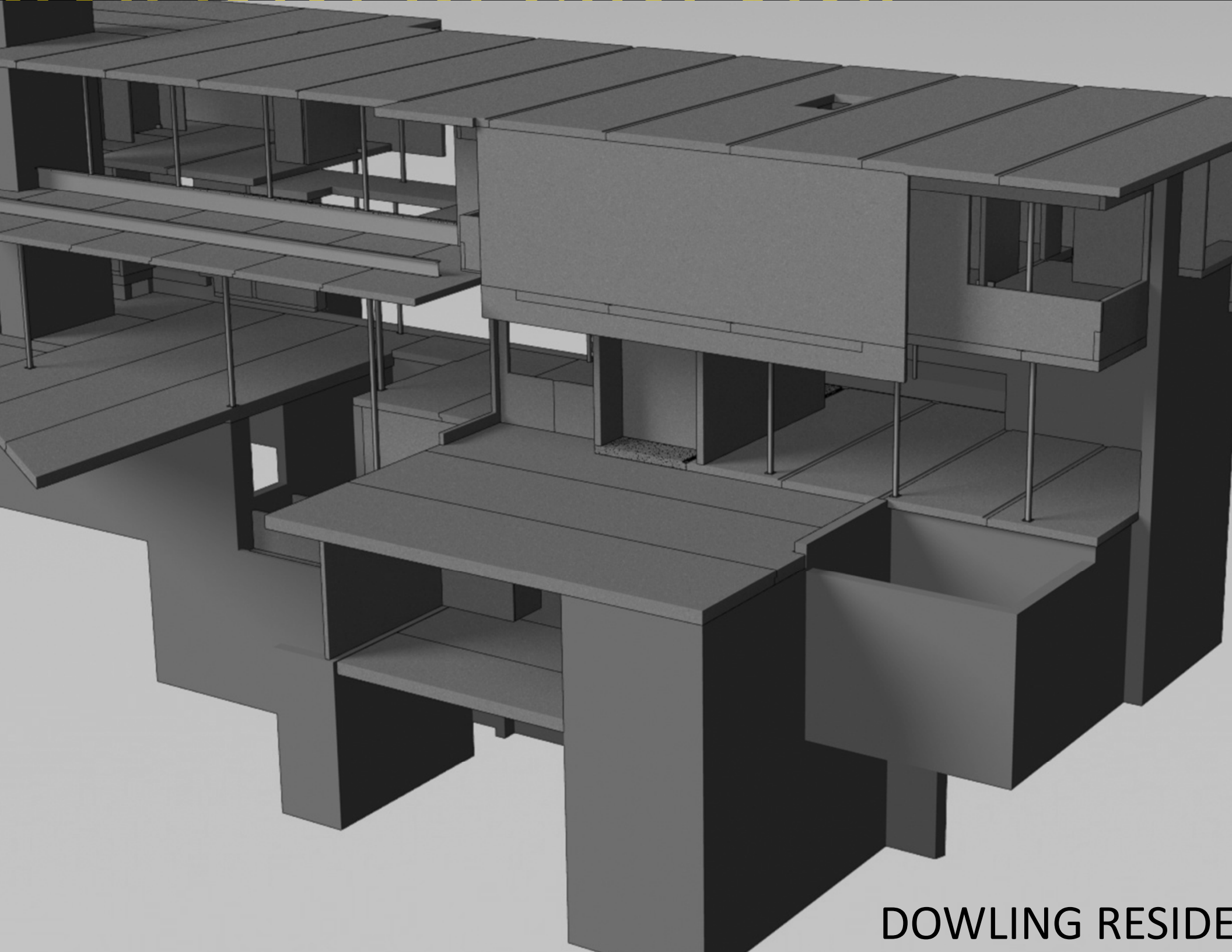
PATKAU ARCHITECTS











DOWLING RESIDE











MPLE OF LIGHT  
AU ARCHITECTS





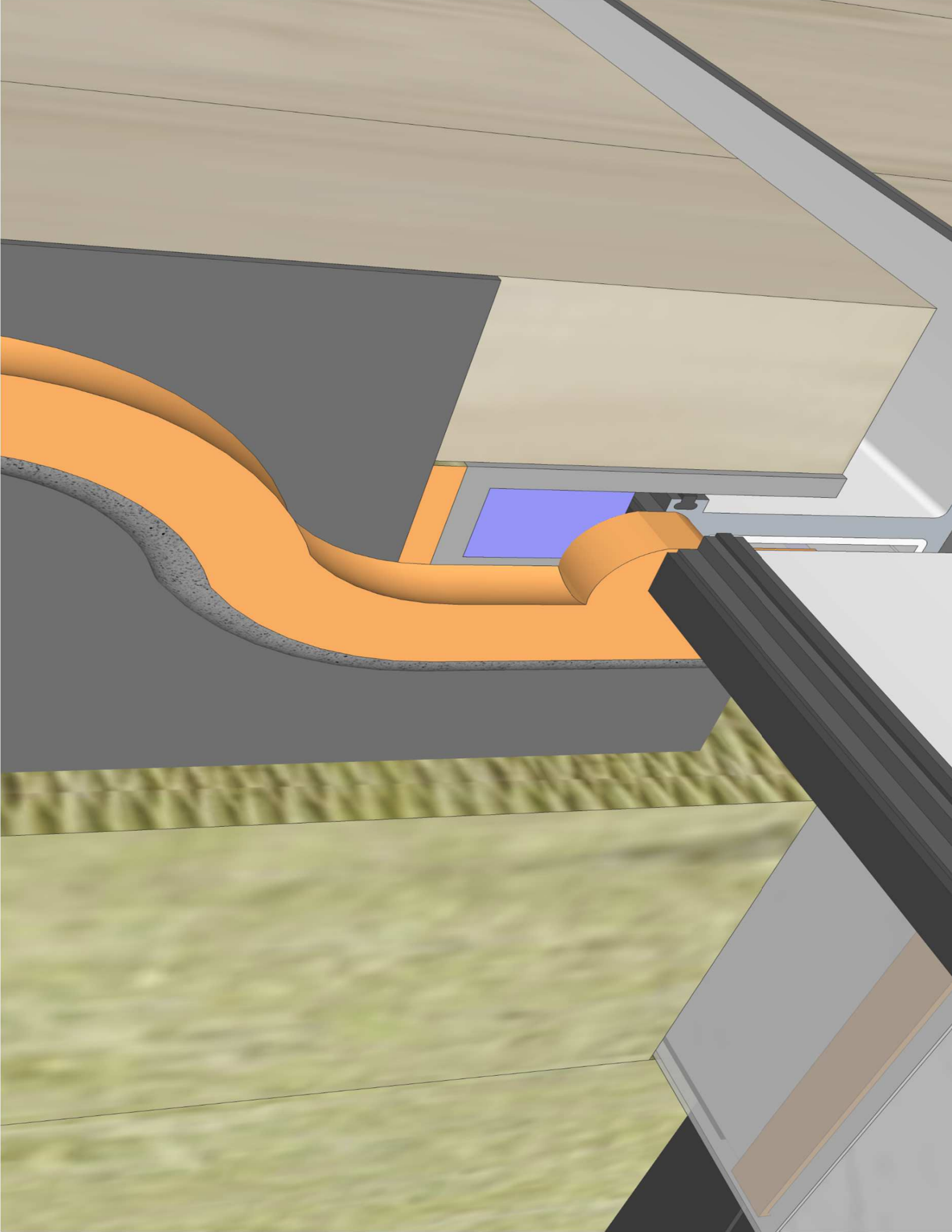


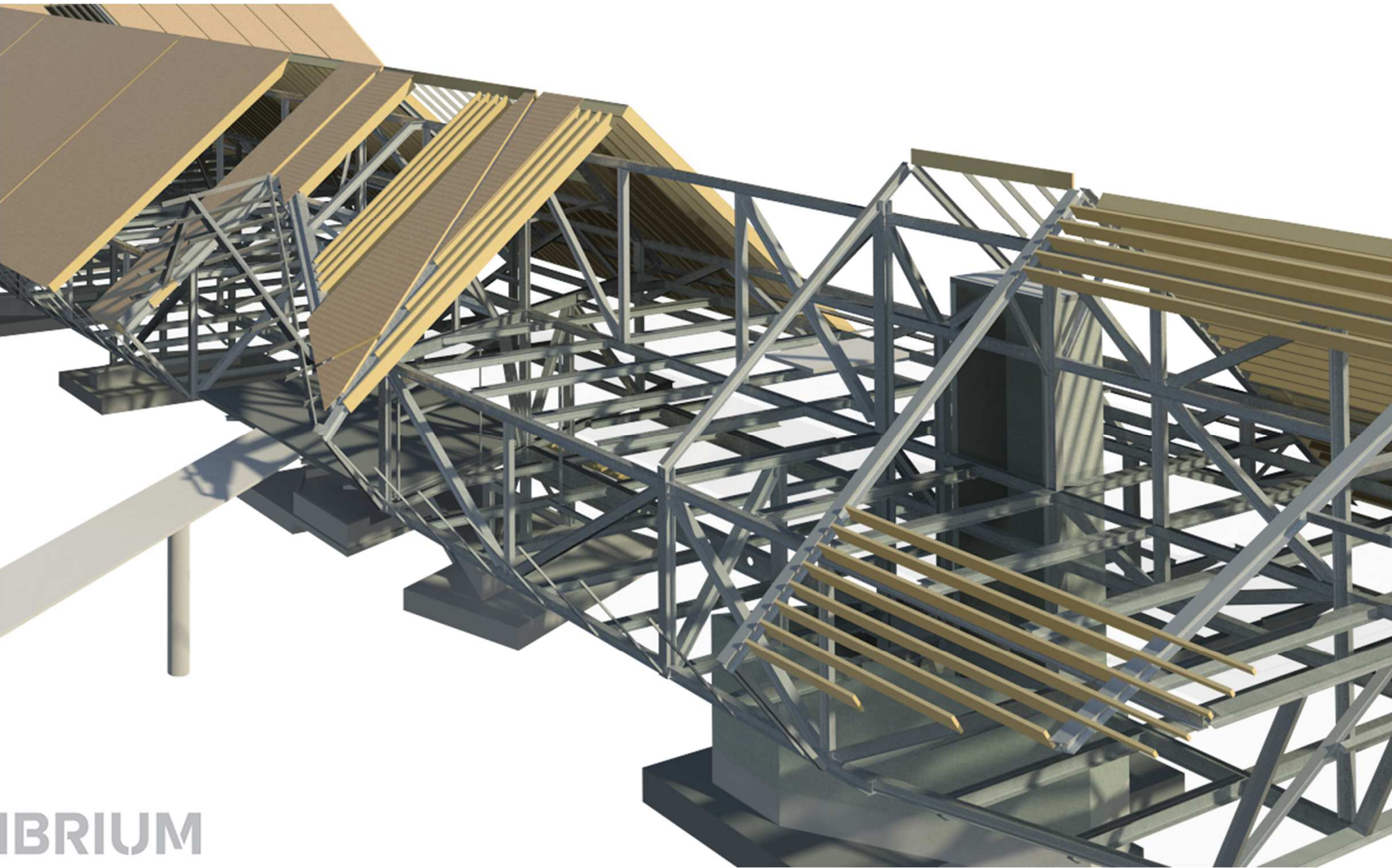
































3-E-22 B16 B16

1

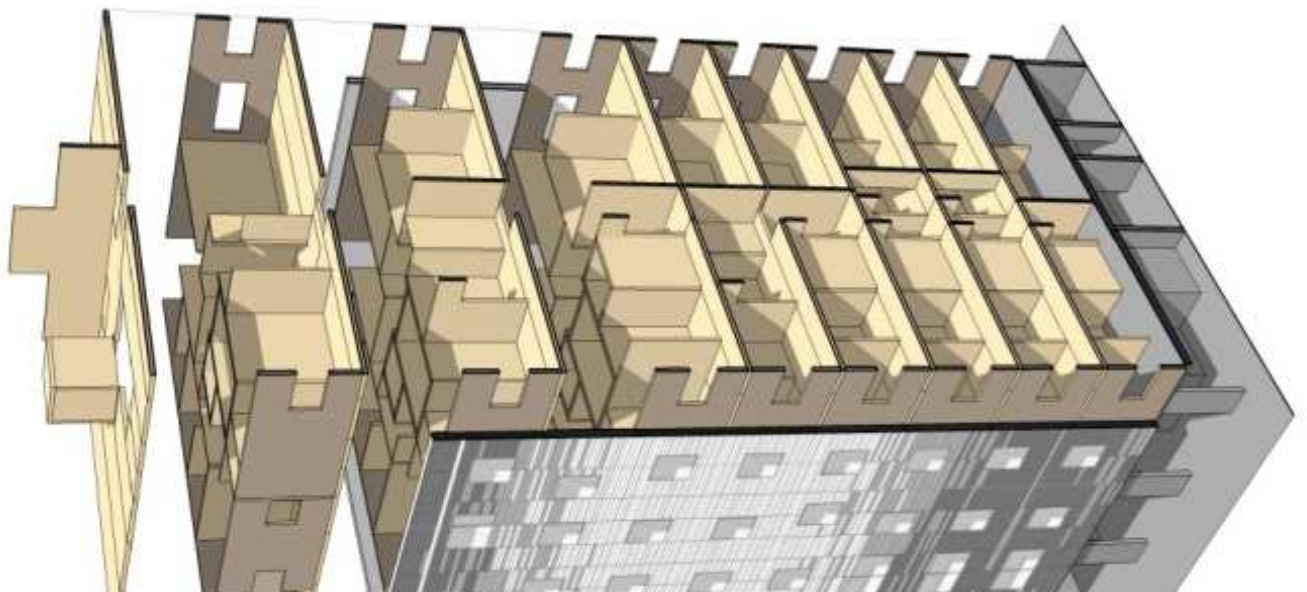
PH



**GROWING**









**CASE FOR TALL WOOD BUILDINGS”**

**WOOD IS WEAK**



89.9m  
NOBLE  
FIR



90.7m  
TASMANIAN  
BLUE GUM



94.9m  
GIANT  
SEQUOIA



96.9m  
PHILLIPINE  
ROSEWOOD



96.9m  
SITKA  
SPRUCE



33

99.4m  
COAST  
DOUGLAS  
FIR



6



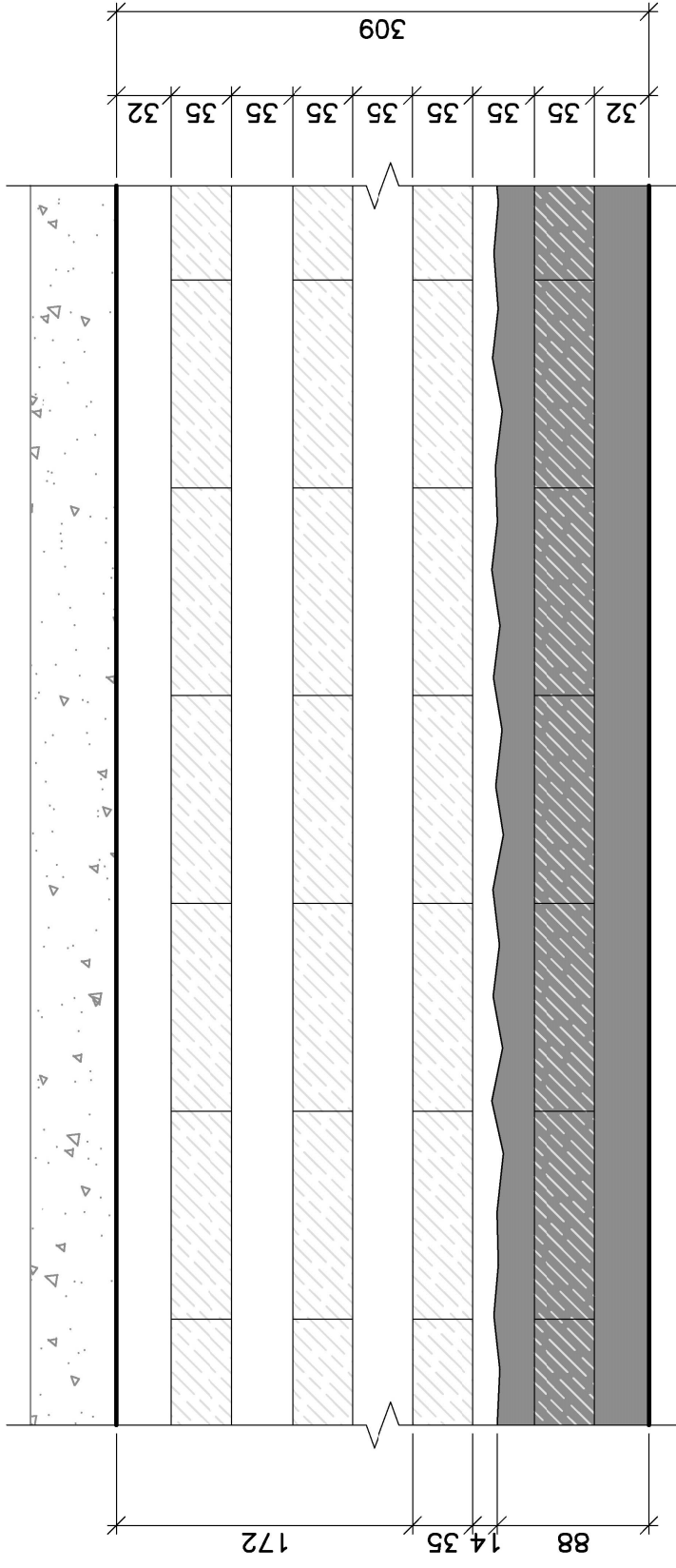
99.6m  
MOUNTAIN  
ASH



115.6m  
COAST  
REDWOOD



**WOOD BURNS**



**DESIGN CHARRING - CLT FLOOR SLAB**

1:5





1:25:32



**PAVUS, a.s.**  
POŽÁRNÍ ZKŮŠEBNA

**Rhomberg Bau  
GmbH**

**2010-02-16**

Firma:

Datum:

60K<sub>15</sub>





# WOOD ROTS

# Temple Horyu-ji

Nara, Japon

Built: 603 to 1603

32.5m in height



**TERMITES**

**WE WILL SHAPE THE  
PLANET CLEAN**

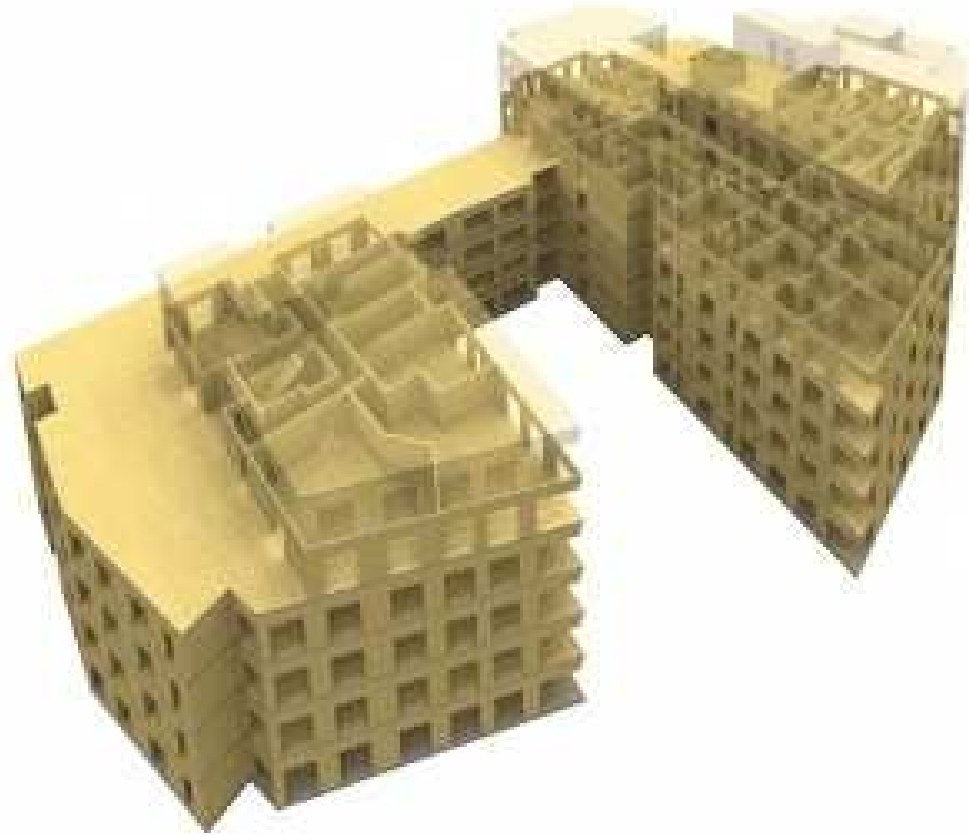


An aerial photograph showing a landscape with a clear boundary between a dense green forest on the right and a cleared, brownish area on the left. Two dirt roads cross the boundary diagonally. The text "THE PROBLEM + THE SOLUTION" is overlaid in white in the center.

THE PROBLEM + THE SOLUTION

**WOOD IS  
EXPENSIVE**

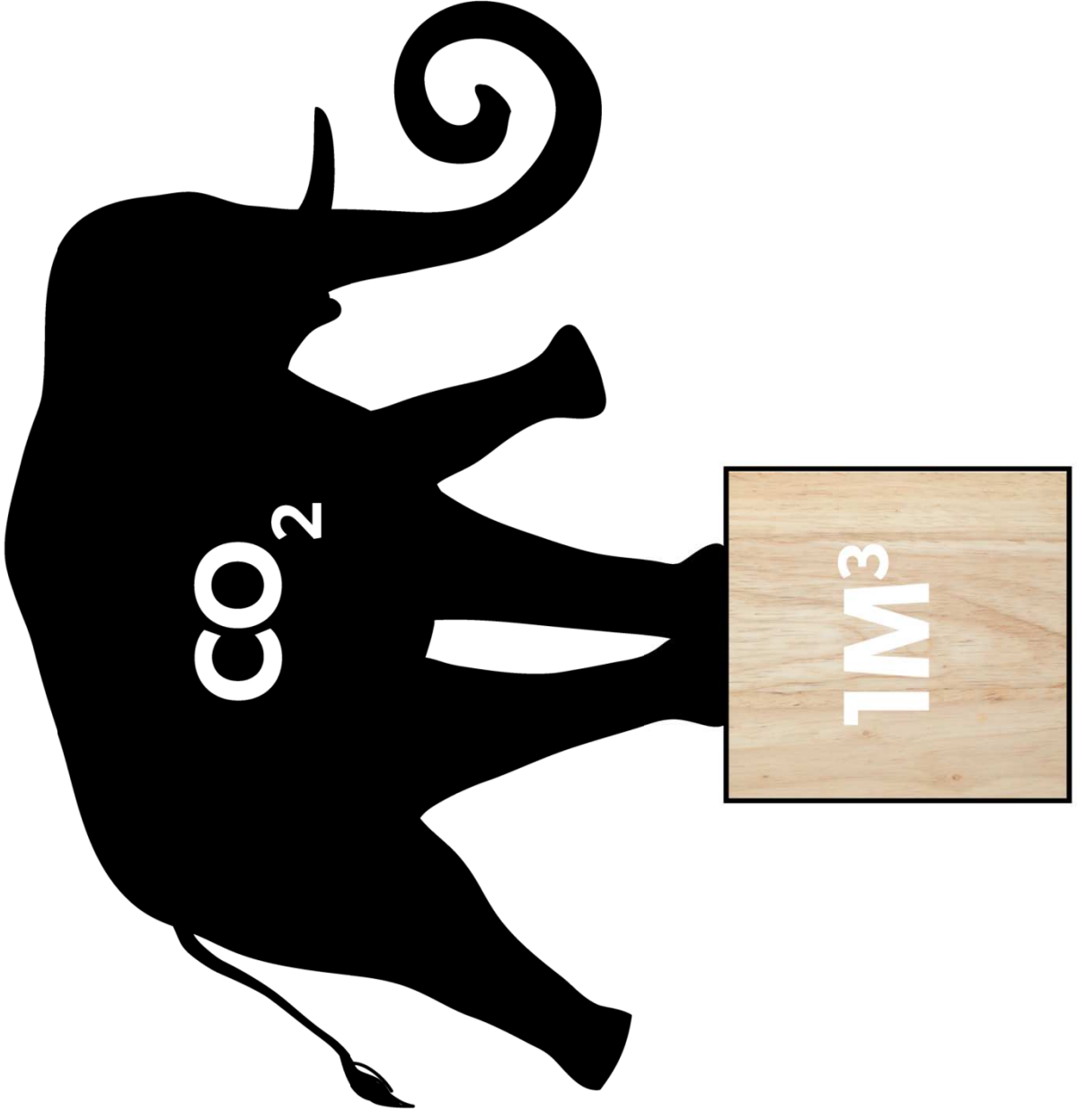
HS FASTER  
APER











# POPULAR SCIENCE

[Login/Register](#) | [Newsletter](#) | [Subscribe](#)



Search

GO

[GALLERIES](#) /// [VIDEOS](#) /// [BLOGS](#) ///

## The World's Most Advanced Building Material Is... Wood

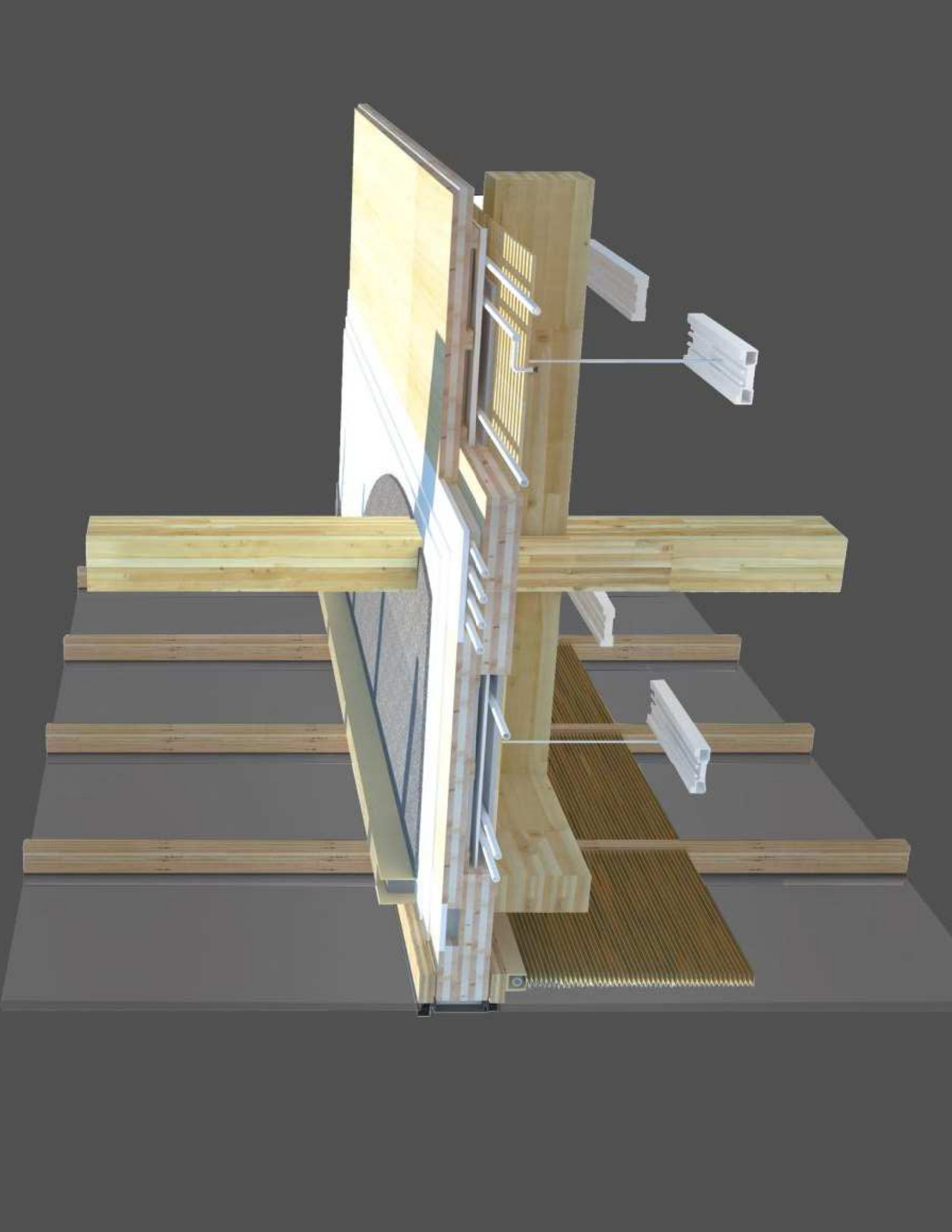
And it's going to remake the skyline

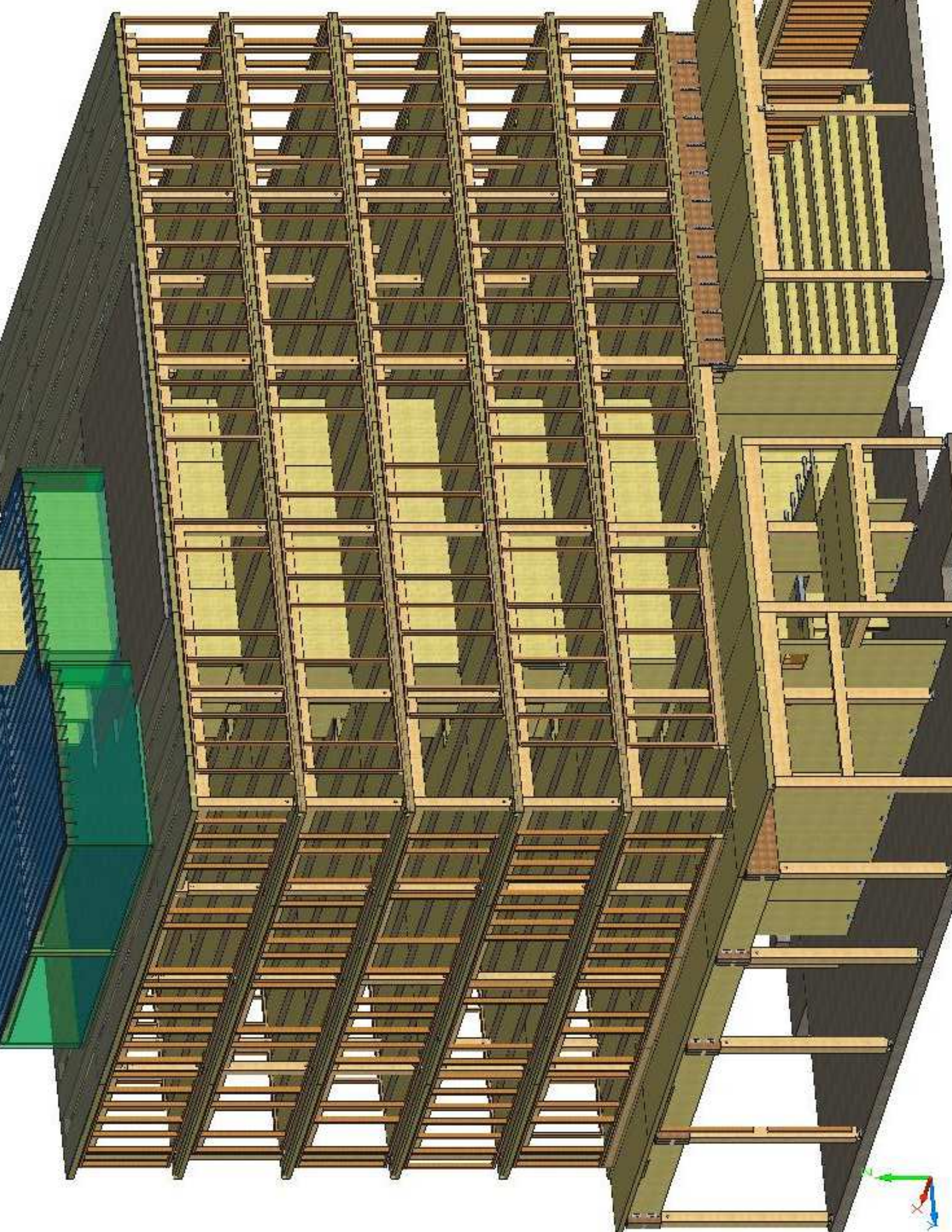
By Clay Risen Posted 02.26.2014 at 9:53 am













WAMADA HOTEL



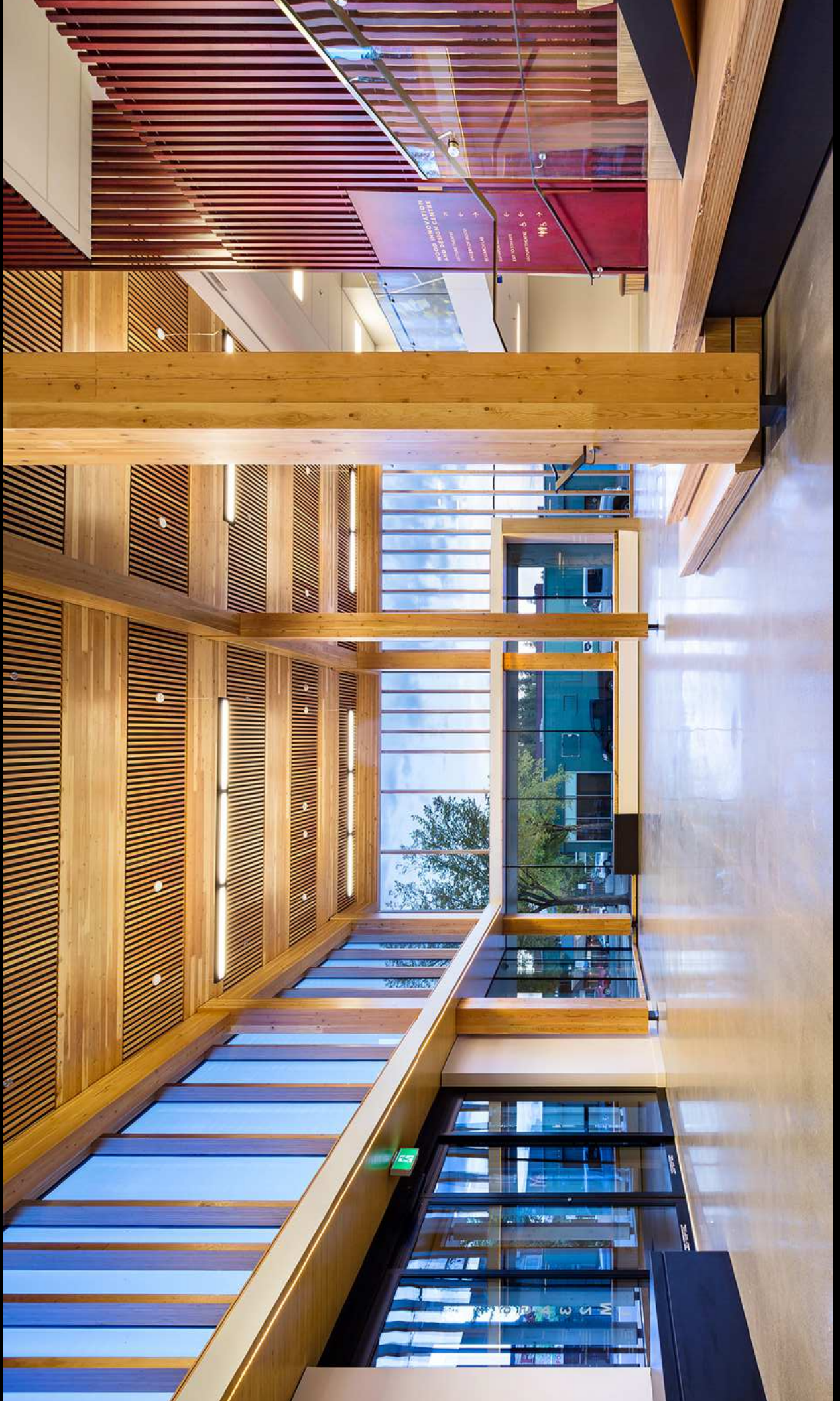


WIDC

WOOD INNOVATION AND DESIGN CENTRE  
1000 GEORGE STREET



1000 GEORGE STREET



WORLD INNOVATION  
AND DESIGN CENTRE

← INNOVATION  
← DESIGN CENTRE  
← RESEARCH CENTRE  
← COLLABORATION CENTRE

→ INNOVATION  
→ DESIGN CENTRE  
→ RESEARCH CENTRE  
→ COLLABORATION CENTRE

EXIT





**FROM  
DEMONSTRATION TO  
MARKET**







**QUIET**

**CLEAN**

**SAFE**





1250 HASTINGS  
12 + 8 Condominium





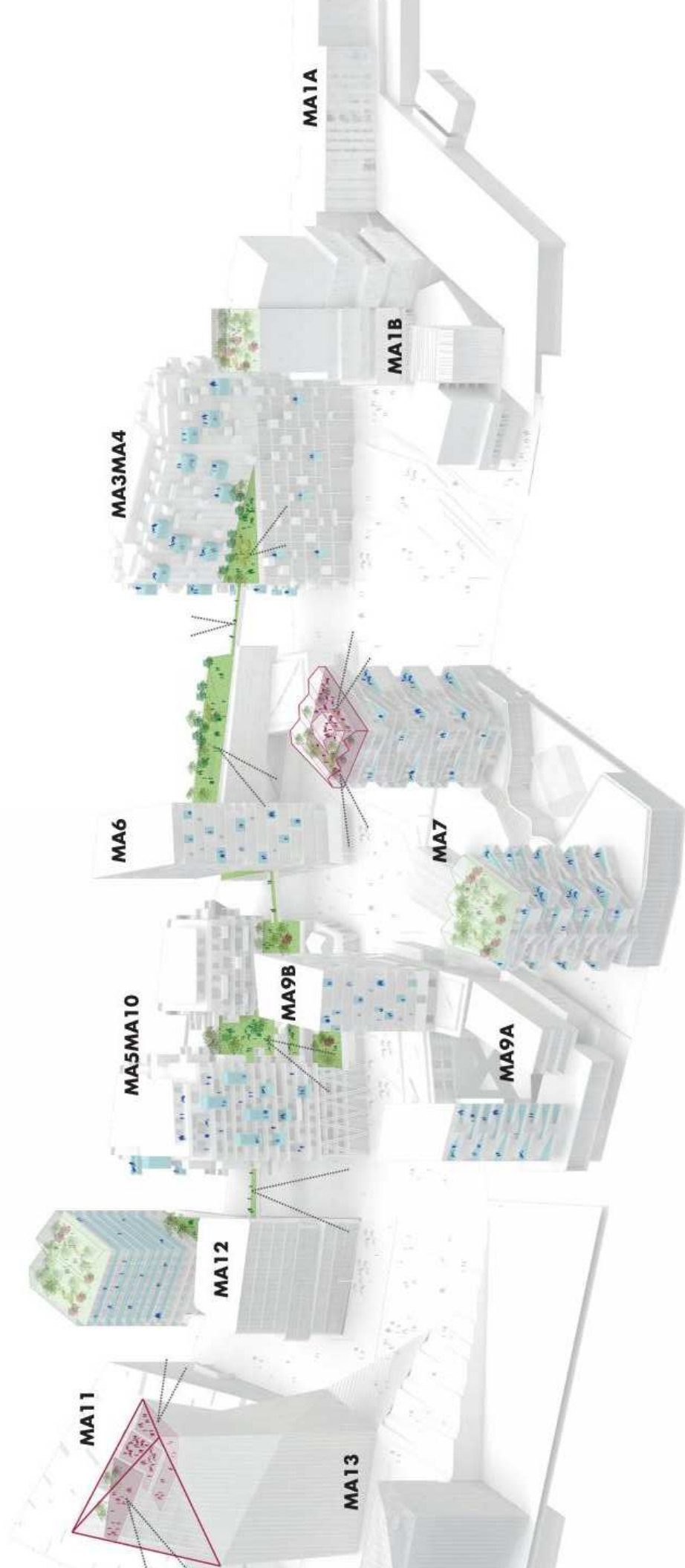






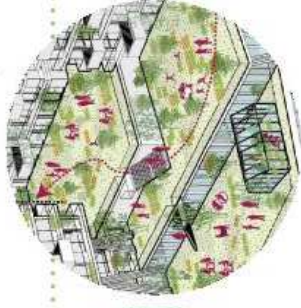
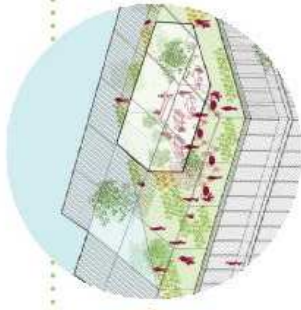


# ON SUR PARIS » CE EXTÉRIEUR EN HAUTEUR POUR CHACUN



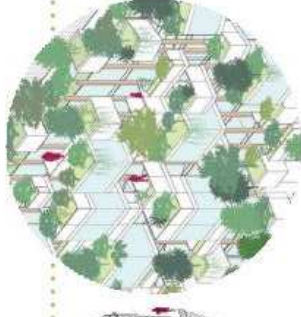
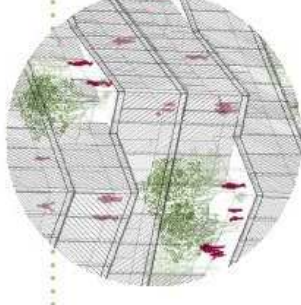
## LES TOITS PUBLICS

DES POINTS DE VUES EXCEPTIONNELS POUR TOUS



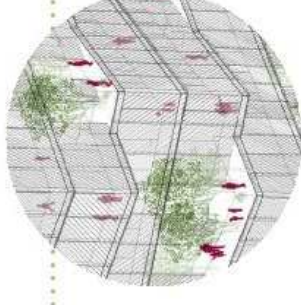
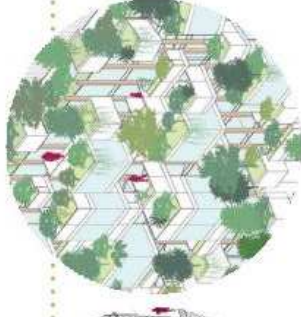
## LE PARCOURS ÉLEVÉ

L'ÉCHANGE ET LE LIEN SOCIAL AU COEUR DU PROJET



## LE BALCON À SOI

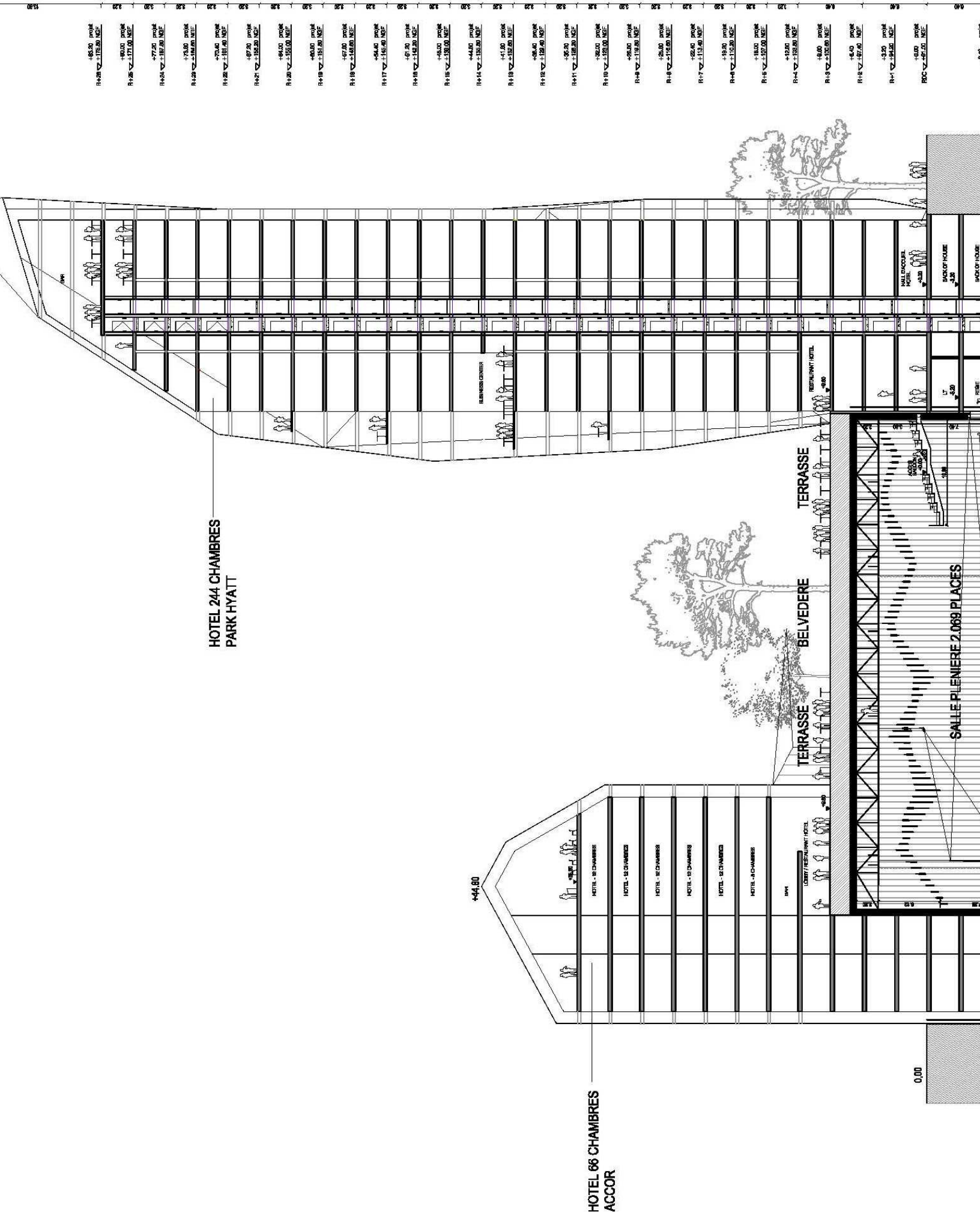
DES ESPACES EXTÉRIEURS GÉNÉREUX AVEC DES VUES DÉGAGÉES





HOTEL 244 CHAMBRES  
PARK HYATT

HOTEL 66 CHAMBRES  
ACCOR



0.00

