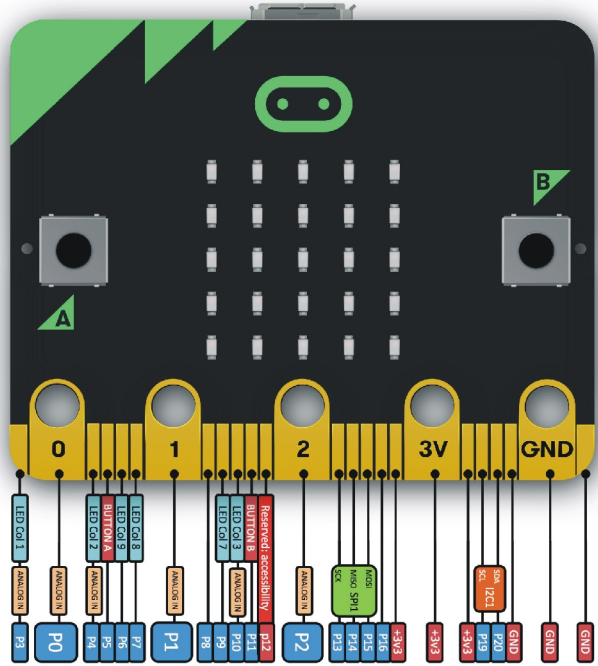
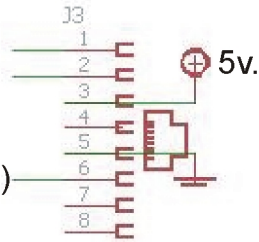


Butiá

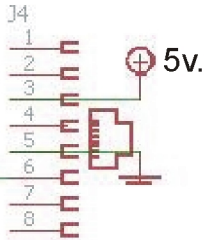


(I2C1)

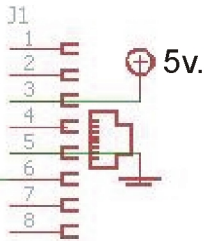
P19 (SCL)
P20 (SDA)



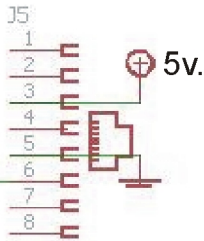
P3 (Analog. IN)
(0v. a 3.3v.)



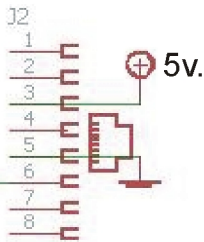
P4 (Analog. IN)
(0v. a 3.3v.)



P1 (Analog. IN)
(0v. a 3.3v.)

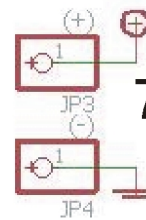
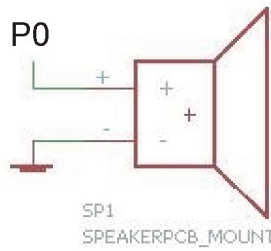


P10 (Analog. IN)
(0v. a 3.3v.)



BOTON

P2 (Analog. IN)
(0v. a 5v.)



7v. to voltaje
motores

